

PROPOSAL

Proposal : To resolve batch code punching latter depth issue and Cavity no.A17 to A24 at centre.

Customer : ETL

Part Name : CARGO WHEEL CYLINDER

Part No : B4PQ010030

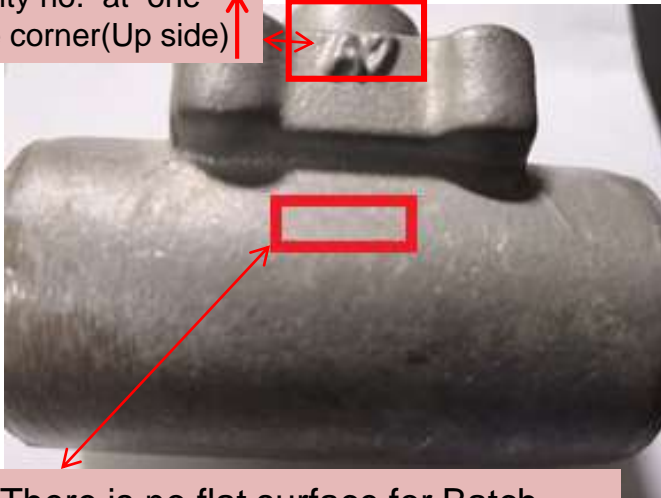
Date :04.09.2023

Target date-After
ETL approval

Proposal : : To resolve batch code punching latter depth issue and Cavity no.A17 to A24 at centre.

BEFORE

Cavity no. at one side corner(Up side)

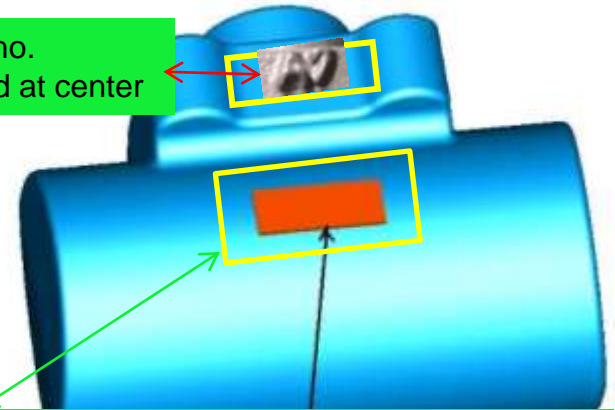


There is no flat surface for Batch code punching.

AFTER

CARGO WHEEL CYL - PUNCHING LOCATION

Cavity no. required at center



Flat surface for Batch code punching.

PUNCHING LOCATION -15X6X0.5

To resolve batch code punching depth uniformity issue Punching pad (15*6*0.5) will be provided and Cavity No. at center as per above Image.

Target date –After ETL approval

Proposal : : To resolve batch code punching latter depth issue and Cavity no.A17 to A24 at centre.

Thank You

Target date –After
ETL approval