

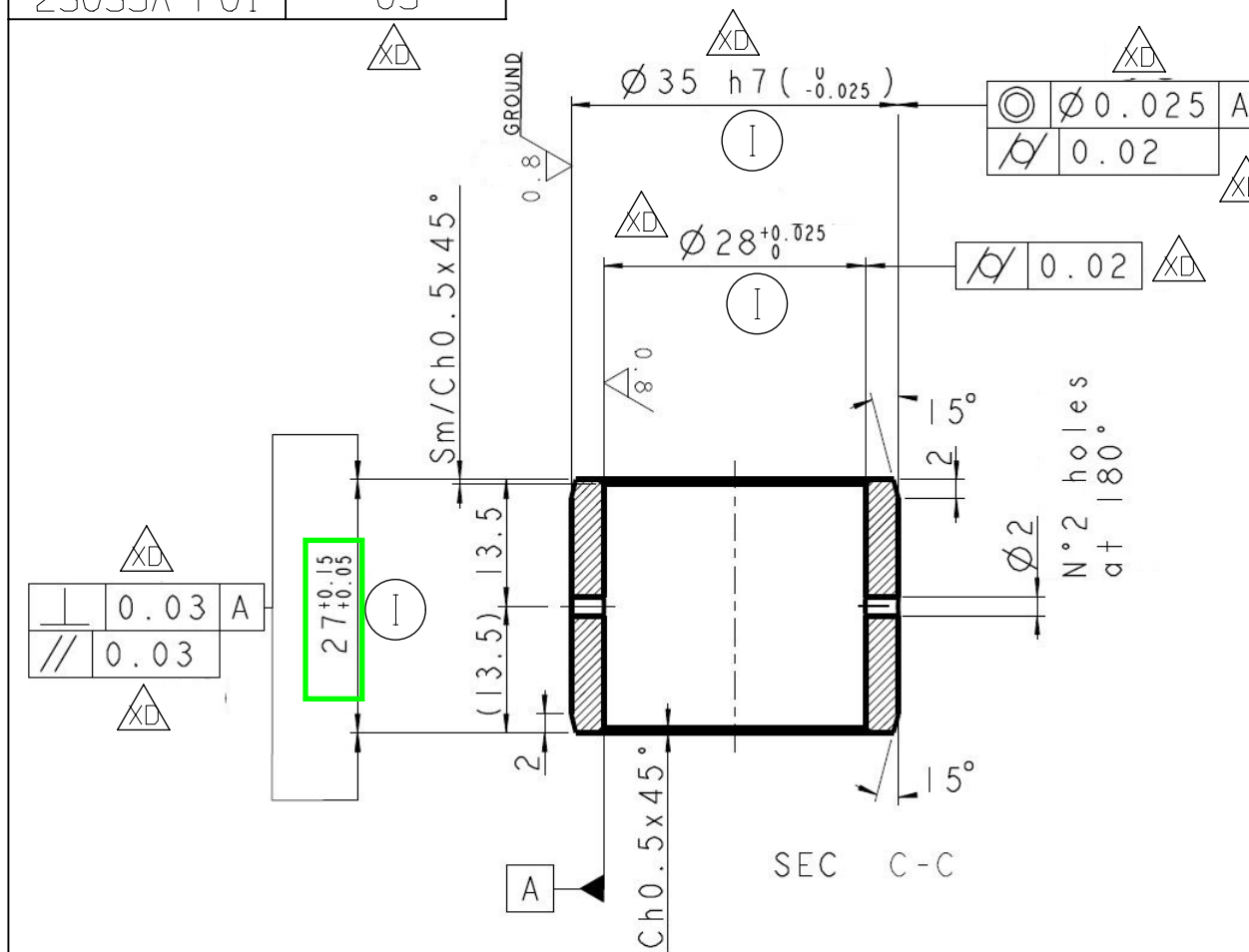
THIS DRAWING AND THE INFORMATION THEREIN ARE THE PROPERTY OF ENDURANCE TECHNOLOGIES LTD. (TRANSMISSION) AND SHALL NOT BE REPRODUCED COPIED, RECORDED IN ANY MEDIA, USED FOR ANY OTHER PURPOSE OR DELIVERED AND/OR DISCLOSED TO ANY THIRD PARTY WITHOUT WRITTEN CONSENT OF ETL.

For MASTER COPY ON SAFE PLM

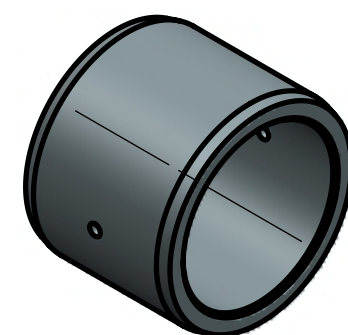
DO NOT SCALE

23035A-P01 03

① IMPORTANT	● SAFETY	● SIGNIFICANT
4	0	0



APPLICABLE STANDARD			
STANDARD NAME	DESCRIPTION	GRADE	YEAR/REV.NO.
-	-	-	-



SCALE 1:1

① Surface treatment: Casehardening
 Surface hardness: 58 - 63 HRC
 Effective depth: Δ
 0.2 - 0.5 mm on ground surfaces
 0.3 - 0.5 mm on other surfaces

GENERAL TOLERANCES:
 UNI ISO 2768-mK

$3.2 / (0.8 / 0.4)$

MASS (Kg) (R) T M
 0.0722

MOD	NOS	DESCRIPTION	DATE	DRN	CHK	APVD
XD	9	FOR $\phi 35$ h7 WAS h6, $\phi 28$ 0.025/0.0 WAS $\phi 28$ 0.02/0.0, CONCENTRICITY $\phi 0.025$ WAS $\phi 0.02$, CYLINDRICITY AT 2 PLACES 0.02 WAS 0.01, PERPENDICULARITY 0.03 WAS 0.02, PARALLELITY 0.03 WAS 0.02, HRC 58-63 WAS HRC 59-63 CUSTOMER REV. UPDATED	27.07.21	AMD	RMS	SKB
XC	3	PERPENDICULARITY 0.02 WAS 0.01, PARALLELITY 0.02 WAS 0.01, CUSTOMER REV. UPDATED	12.12.20	AMD	RMS	APJ
XB	8	FOR $\phi 35$ h6 WAS h5, $\phi 28$ 0.02/0.0 WAS $\phi 28$ J6, CONCENTRICITY $\phi 0.02$ WAS $\phi 0.01$, CYLINDRICITY 0.01 WAS 0.005, Ra0.8 WAS Ra0.4, MATERIAL UPDATED, CUSTOMER PART NO. & REV. UPDATED	27.11.20	AMD	RMS	APJ

MATERIAL	DATE	CUSTOMER
SAE 8620	11.11.20	ADLER
HEAT TREATMENT	SCALE	COMPONENT NAME
REFER DRAWING	N.T.S.	INTERNAL RING
SURFACE TREATMENT	DRAWN	FOR ROLLER BEARING
---	A.M.D.	DRG. NO. /PART NO.
	CHECKED	REV
	J.R.R.	
	APPROVED	C2KB017020 XD
	A.P.J.	

ECN NO :-

ENDURANCE

ENDURANCE TECHNOLOGIES LTD. (TRANSMISSION DIVISION)

K-226/1, M.I.D.C. INDUSTRIAL AREA, WALUJ, AURANGABAD - 431 136, INDIA.

User: amdeshmukh Node: ABDHTSCAD02 Job: amdeshmukh_C2KB017020_modelspacedrawing_modelspacedrawing Drawing: ModelSpaceDrawing Part: C2KB017020 Date: 27-Jul-21 Time: 15:55