



Change Request- Gowell Rubber Industries (Unit2)

Proposed Change	Change in Location
Description Of proposed Change	The Manufacturing Capacity is 95%~ 100% utilised at Existing location (Unit2) and there is no further scope to add any new machinery and there is a risk of non fulfilling the supply requirement in case of Fluctuation in demand and new developments. We have already requested for the same change through Request no. CM/23-24/0460 on 25.08.23 and CM/23-24/0434 on 26.05.23
Current Detail	Existing Plant is running at 95 %~100% Manufacturing capacity.
Trigger for the change	Risk of non fulfilment of supply in case of schedule fluctuation.
Proposed Detail	As a contingency plan we propose to add second manufacturing location (Unit 1) for existing parts and for upcoming developments.
Advantage at proposed Location	We have spare capacity and scope of future expansion at our 2 nd Manufacturing location. There are similar facilities in terms of Machineries and testing facilities, trained Manpower, and improved infrastructure. We have complete mixing facility at this location also manufacturing the similar parts & Supplying to HMCL through other Tire 1. ETL Team has already audited at the Proposed location (Unit-1) and All audit observations and improvement suggestions has been implemented at this location.



4M Change Verification & Proposed Plant advantages



Comparison Detail Details		Existing Location Unit 2 (Sector-59 Ballabgarh faridabad)	Proposed Location Unit 1 (Sector-57 F.I.T Faridabad)	Remarks
MAN	MAN	Level 3 Skilled Manpower	Level 3 Skilled Manpower	NO Change (Operator's Skill Set is same)
	MACHINE	Compression Moulding (Make-Tungu) Injection Moulding (Make-Desma)	Compression Moulding (Make-Tungu) Injection Moulding (Make-Desma)	No Change (Machine make is same)
	MATERIAL	Material (M.B. Compound) supplied from Unit 1	Material (M.B. & F.B. Compound) manufacturing facility in this unit	No Change (M.B. supply already from proposed unit)
	METHOD	Process control standard is same	Process control standard is same	No change PCS is same
ADVANTAGES AT PROPOSED PLANT				
Capacity	Machine Wise	40 % Spare Capacity (On existing machines)		Enhanced Spare capacity
	Space Wise	30 % Spare space for future expansion of machineries		
Infrastructure	Location	Well Organized Industrial town ship (Faridabad Industrial Town)		Improved Plant location
	Plant Space	Appx. 21000 Sq. ft.		More Factory Space
Testing facilities	RM Testing	R.M. & F.B. Testing facilities available (Mooney Viscometer, Specific Gravity, Rheometer etc.)		Advance testing Facilities
	Product testing	Apart from Compound Product Testing facility also available (Dust seal leakage testing machine & Endurance testing machines)		
De-flashing		Apart from manual De-Flashing operation additional Cryogenic De-flashing Machine available		Advance De-flashing machine
Visual Inspection		Apart from manual visual inspection additional Auto Vision inspection Machine Available for O Rings.		Advance inspection facility

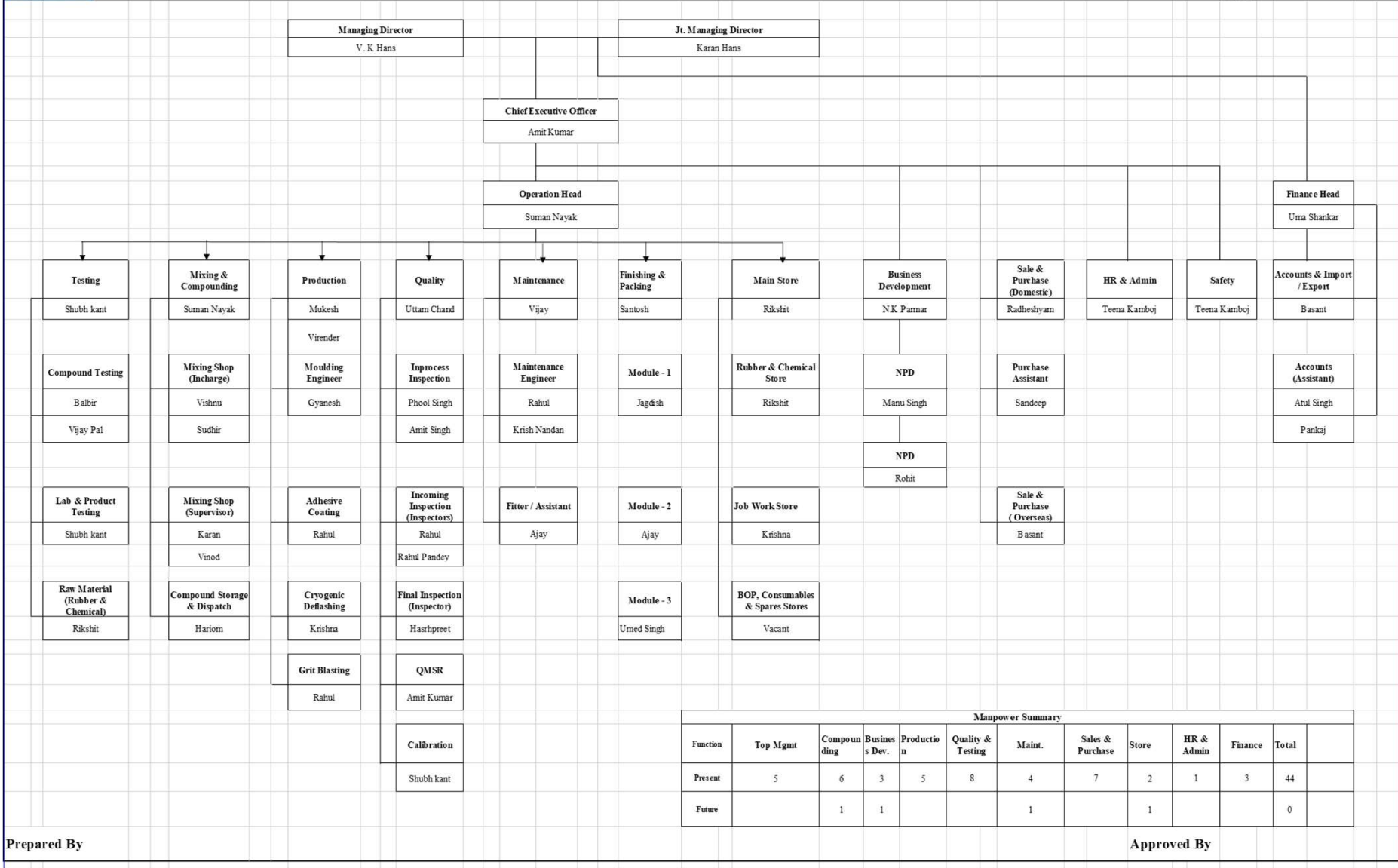


Organization Structure- Existing Location Unit 2 (Sector-59 Ballabgarh faridabad)



ORGANIZATION STRUCTURE GOWELL RUBBER INDUSTRIES (UNIT 1)

Format No:CL/QA/01
Rev No:06
Eff Date:01.01.2024

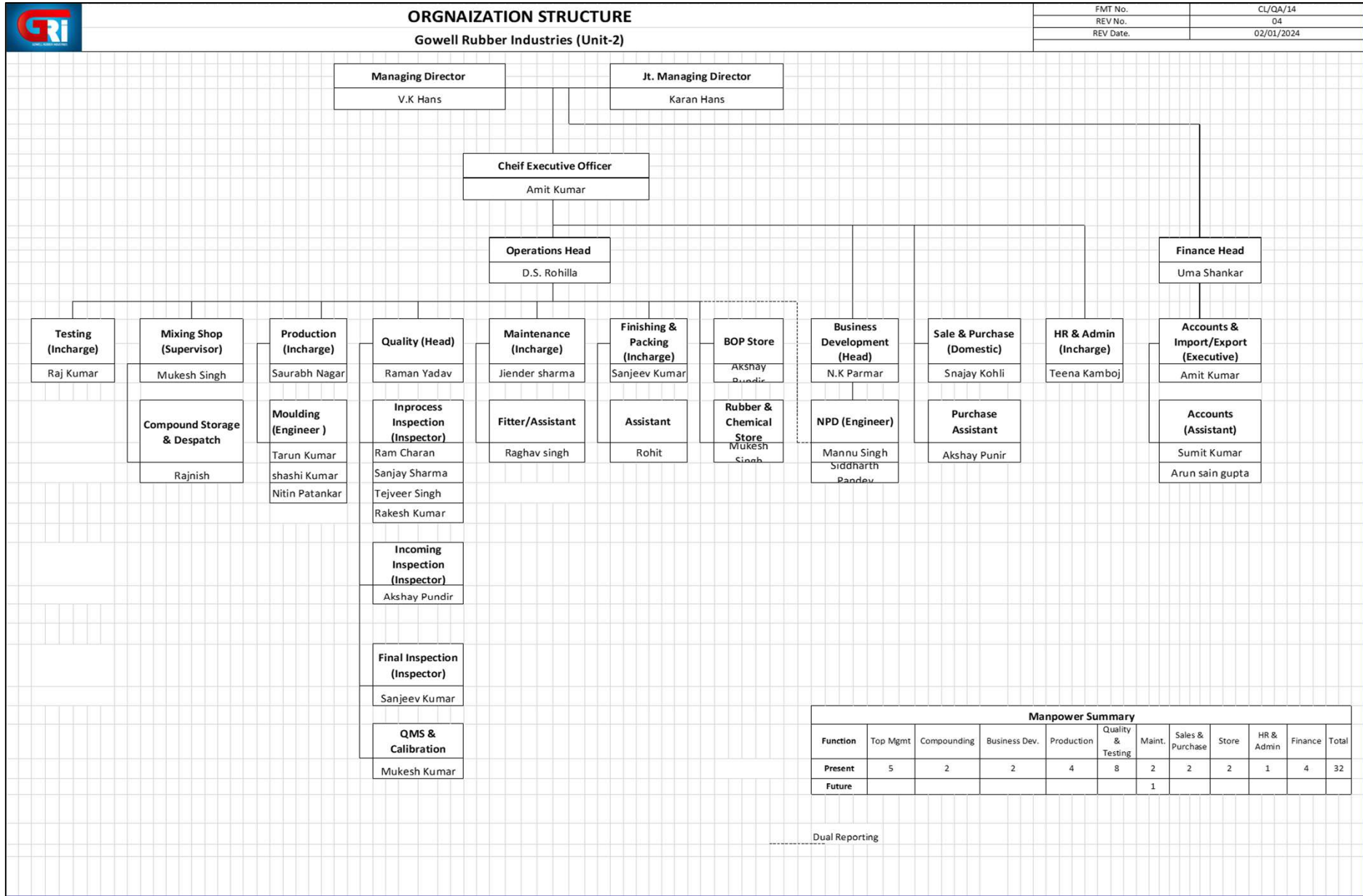


Prepared By

Approved By

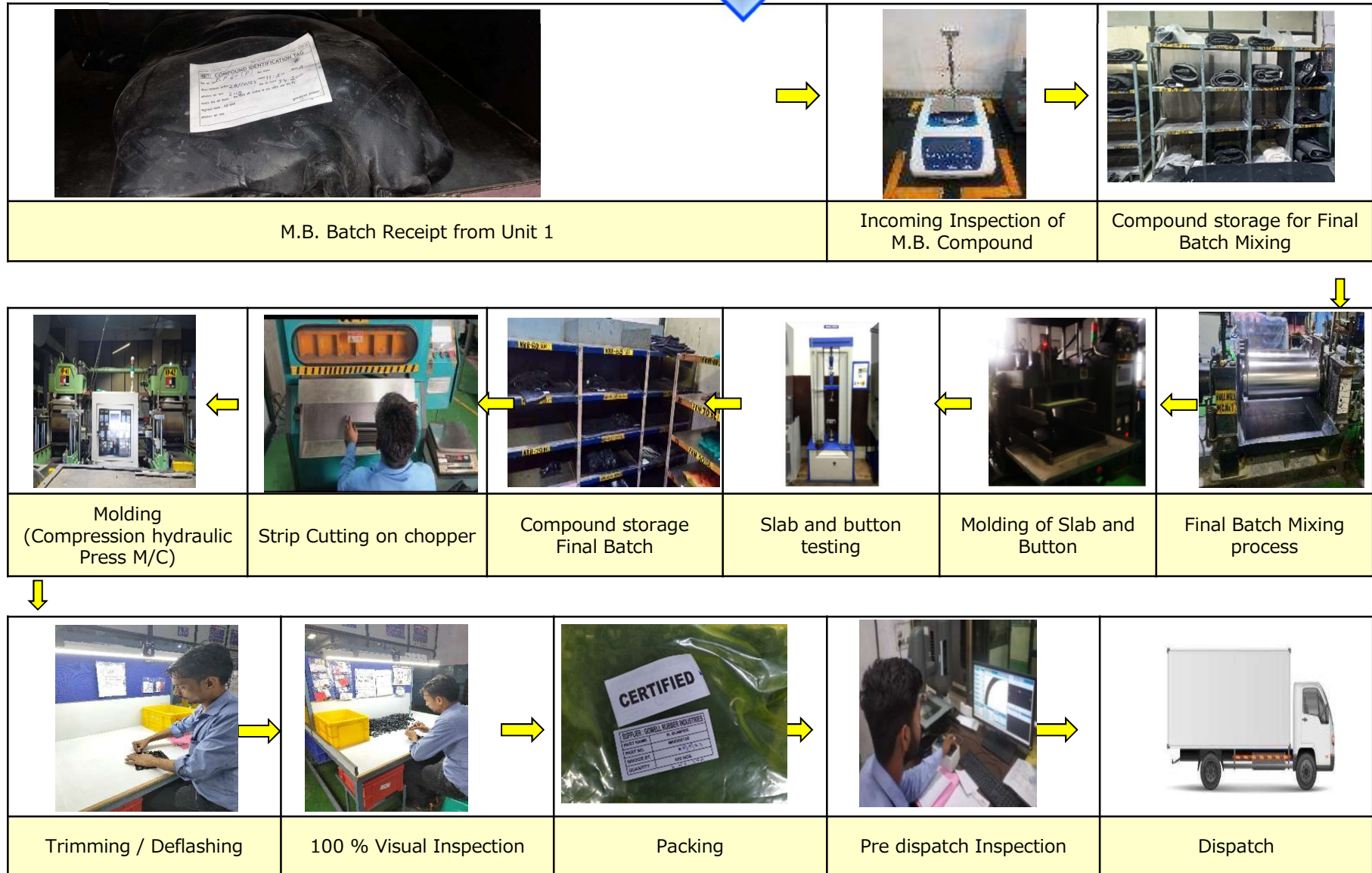


Organization Structure- Proposed Location Unit 1 (Sector-57 F.I.T Faridabad)





Manufacturing Process flow Diagram Pictorial-Existing Location Unit 2 (Sector-59 Ballabgarh faridabad)





Manufacturing Process flow Diagram Pictorial- Proposed Location Unit 1 (Sector-57, F.I.T Faridabad)

