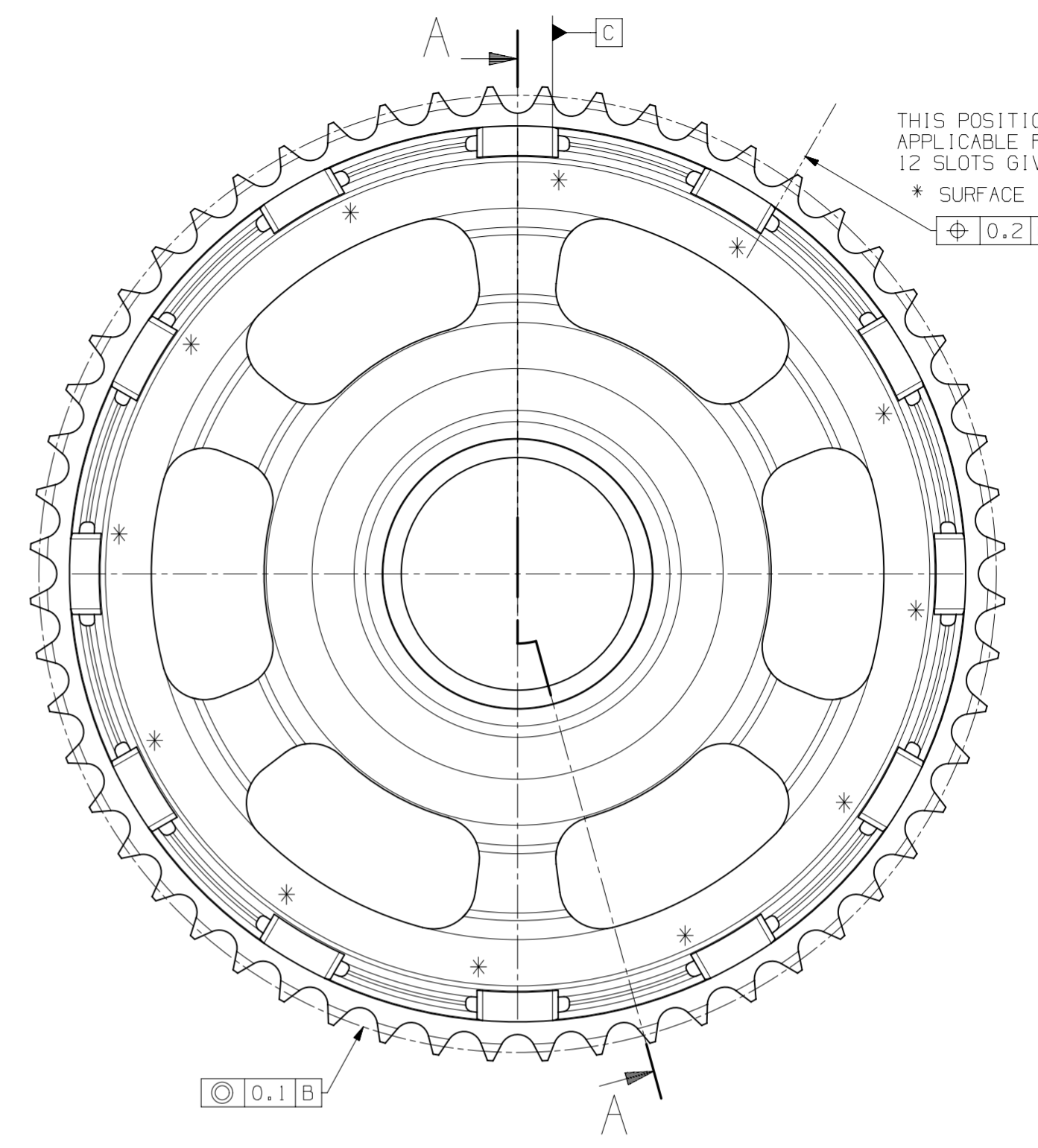
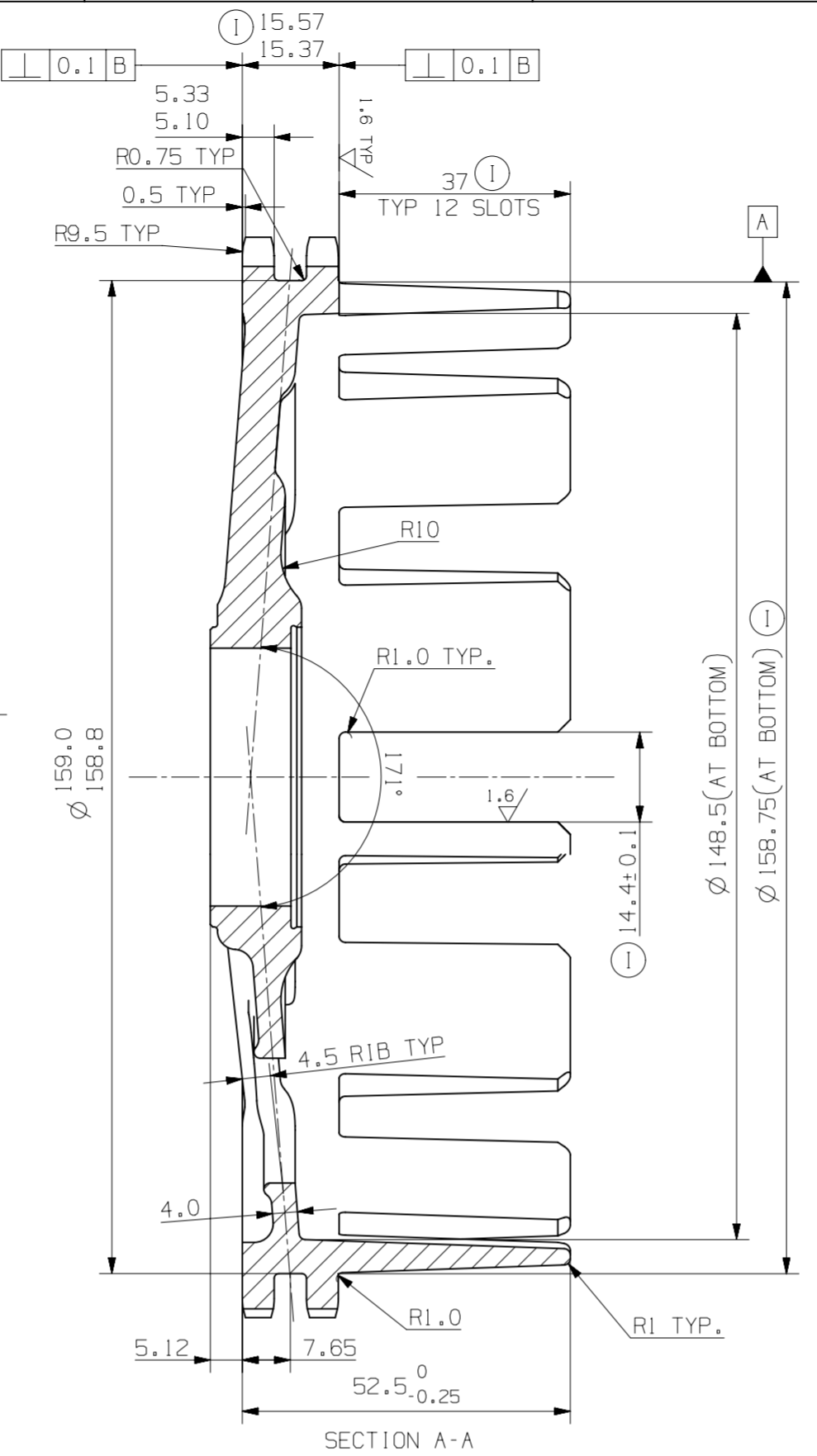
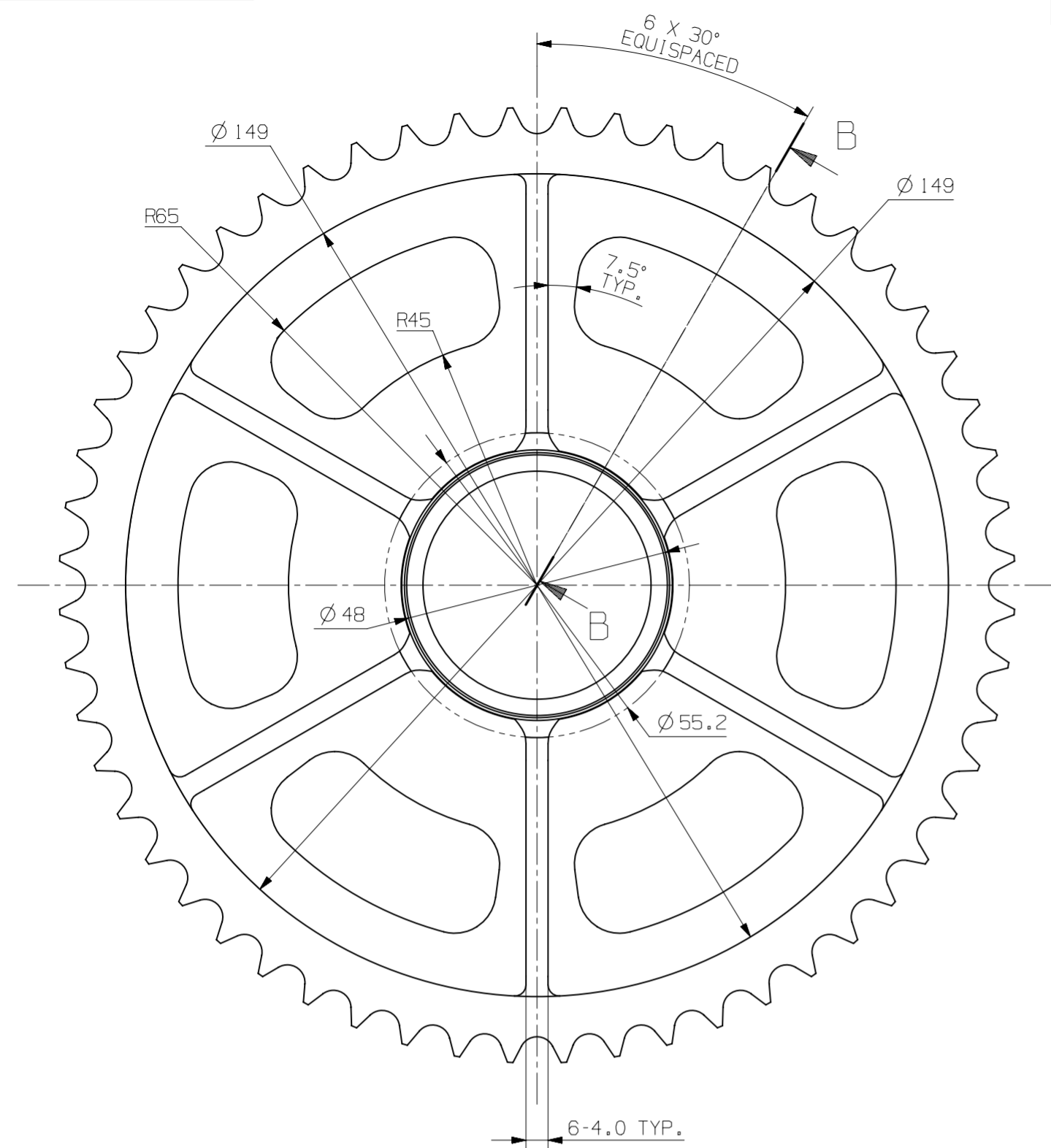
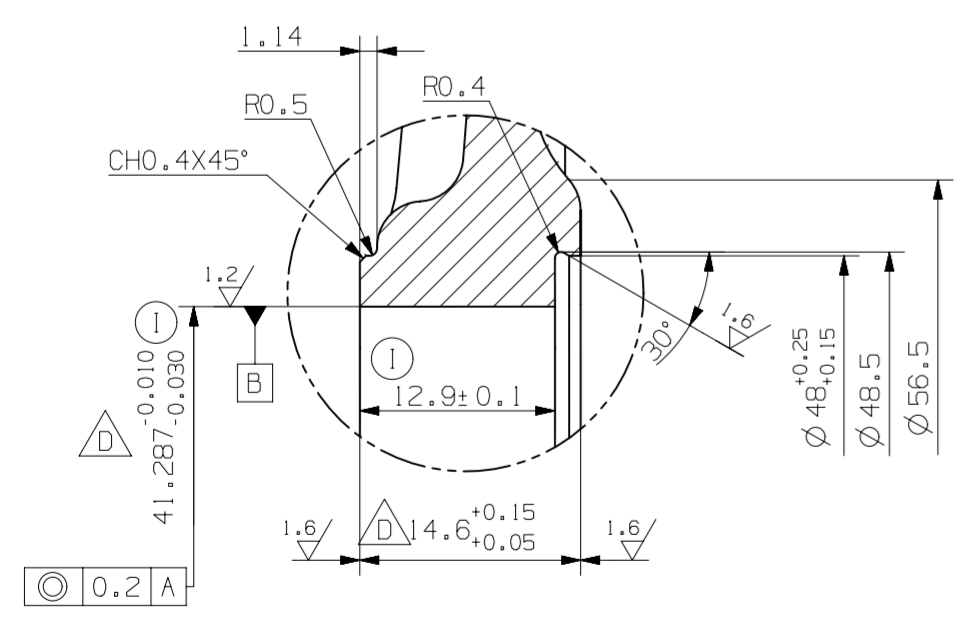


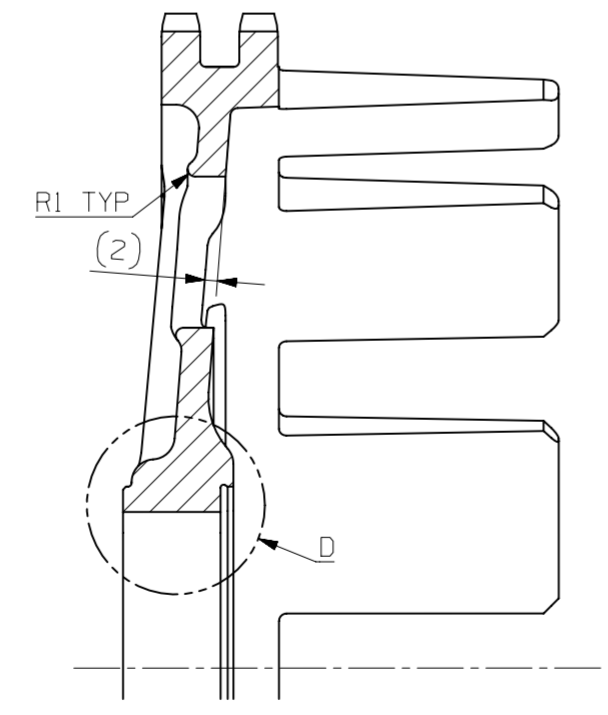
① IMPORTANT	● SAFETY	● SIGNIFICANT
7	0	0



Q.A. (I/N)	
Q.A. (DEV)	
PROD.	
V.C.D.	
M.E.	
F.L.S.	
P.D.C.	



DETAIL D SCALE 2:1



SECTION B-B

SPROCKET TOOTH DETAILS :

- NO OF TEETH : 56
- PITCH : 9.525 (3/8")
- ROLLER DIA : 6.35 (1/4")
- TOP DIA : 173.23/173.00
- PCD : 169.88
- ROOT DIA : 163.53/163.43
- DIA OVER 6.35 (1/4") ROLLER : 176.25/176.00 ①
- TEETH TO CONFORM TO B.S 228
- ANGULAR RELATIONSHIP OF TEETH TO OTHER FEATURES UNIMPORTANT

✓ (1.6 / 1.2)

MATERIAL	HEAT TREATMENT	SURFACE TREATMENT	CUSTOMER:-	MASS (Kg) (R) T M
SG-400/12	----	----		1.321
DRAWN BY			DESCRIPTION:-	
V.B.B			DRUM SPROCKET	
CHECKED BY	APPROVED BY	DATE	SCALE	PART NO.
N.S.P	P.K.G	20/04/04	N.T.S	16JQZ00101
SIZE- A2	CONFIDENTIAL-CRITICAL		ENDURANCE TECHNOLOGIES PVT.LTD. (TRANSMISSION DIVISION)	
K226/1, M.I.D.C., INDUSTRIAL AREA, WALUJ, AURANGABAD-431 136, INDIA.				

REV	NOS	ALTERATION	DATE	DRN	CHKD	APPD	ECN
D	2	DIMN. $\varnothing 41.287^{+0.010}_{-0.030}$, $14.6^{+0.15}_{+0.05}$ WERE $\varnothing 41.287^{+0.012}_{-0.028}$, $14.6^{+0.1}_{+0.05}$	11.09.15	P.S.K	N.R.B.	A.P.J.	
C	2	R9.5 WAS CHO.5X45 AND DIM 0.5 ADDED	23.09.13	P.B.M	S.A.M	A.P.J	
B	1	DIM 12.9±0.1 WAS 12.7±0.1	24.05.12	P.B.M	S.A.M	A.P.J	
A	1	PART NO 16JQZ00101_A WAS 925AE001_XG MODIFIED	27.12.07	S.P.Z	A.P.J	P.K.G	