

Annexure - 1

Organization Structure and Engineering Profile

Vision

To be a global leader in the field of simulation dynamics by improving quality and reliability of engineering products used by society for their safety and comfort.

Mission

To improve our ranking by pursuing a multi dimensional approach for

- Serving customer with reliable and value for money simulation dynamic test equipment with worldwide distribution and after sales network*
- Marching ahead towards achieving customer delight by becoming their trusted partner*
- Continuously innovating technology to keep pace with market dynamics*

Virtues & Belief

Respect for people, reliability and fair-play in mutually beneficial business relationship. Upgrading the technology & product through innovation with continuous training for all.

Business Philosophy

Decentralized autonomous organization structure for understanding customer application requirements and meeting social responsibilities.

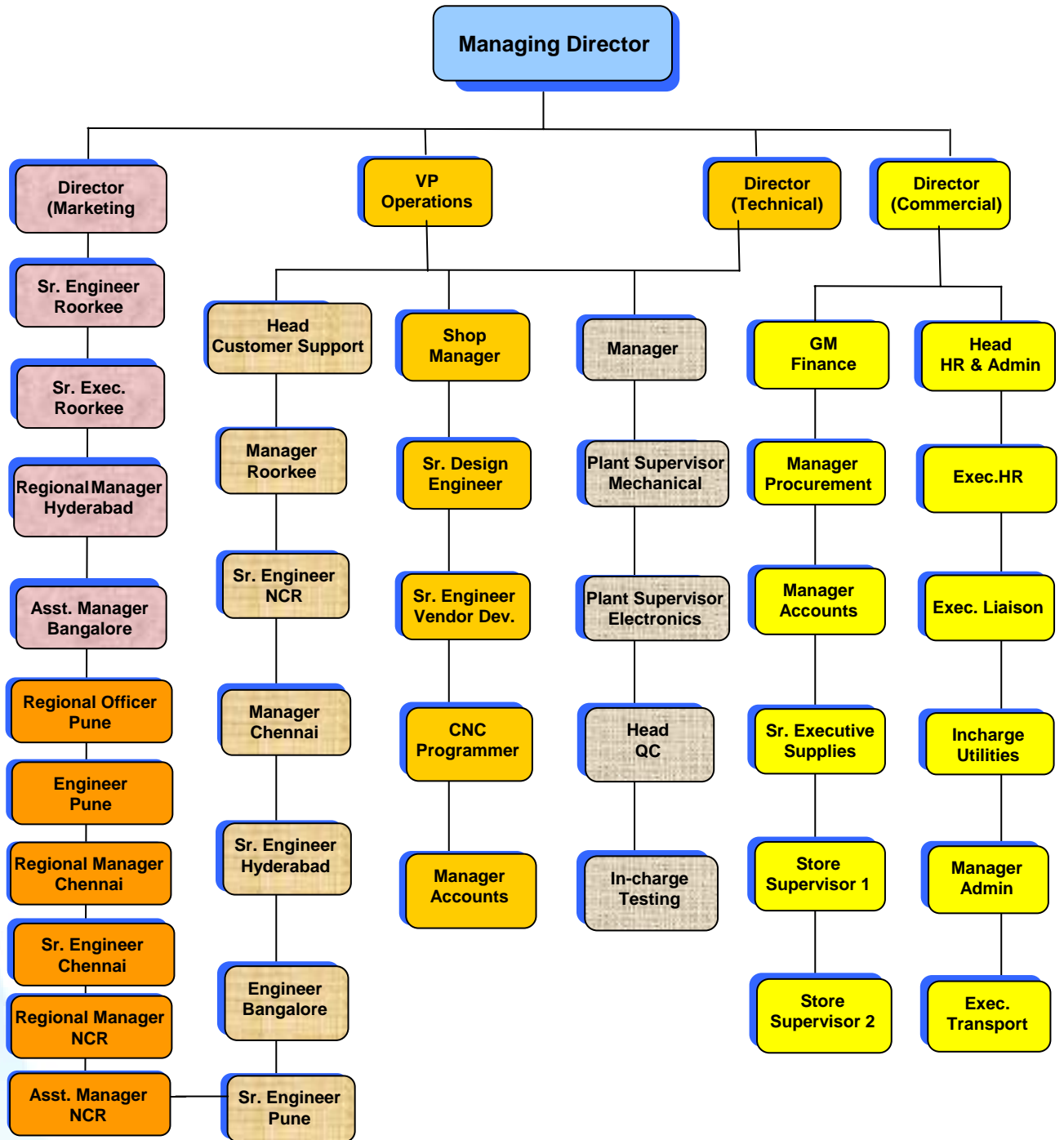


Annexure - 1

Organization Structure and Engineering Profile

Organization Structure

The organisation chart of our company is indicated below w.r.t. only the top positions upto the level of executives. Working level under respective managers are not indicated here.



Annexure - 1

Organization Structure and Engineering Profile

Eco-friendly Infrastructure and manufacturing facility



Shaker Assembly Shop (32 feet height with Overhead Crane)

Annexure - 1

Organization Structure and Engineering Profile



Electronics Assembly Shop and Test Benches



Calibration

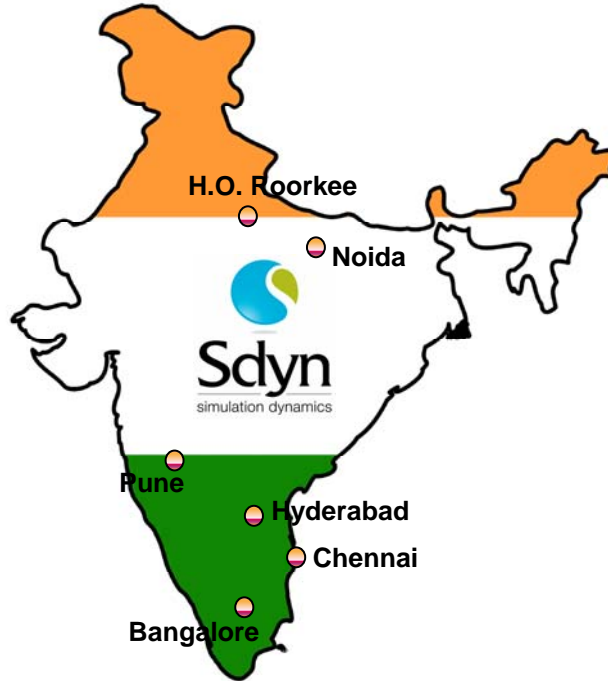


Test Bench

* * * * *

Annexure - 1

24x7 Service Support Network across India



Key personnel facilitating Customer Support is given here under :-

S.N.		Location	Experience
1.	Managing Director	Roorkee	40 Years
2.	Director (Technical)	Roorkee	14 Years
3.	Director (Marketing)	Roorkee	19 Years
4.	Director (Commercial)	Roorkee	28 Years
5.	Head (Customer Support)	Roorkee	26 Years
6.	Manager (Customer Support)	Roorkee	13 Years
7.	Sr. Engineer (Mech.)	Roorkee	19 Years
8.	Sr. Engineer (Elex.)	Roorkee	10 Years
9.	Engineer (Mech.)	Roorkee	6 Years
10.	Engineer (Elex.)	Roorkee	3 Years
11.	Engineer (Refrig.)	Roorkee	5 Years
12.	Sr. Engineer (Mech.)	Noida	8 Years
13.	Engineer (Elex.)	Noida	6 Years
14.	Manager (Mech.)	Pune	12 Years
15.	Sr. Engineer (Elex.)	Pune	7 Years
16.	Engineer (Mech.)	Pune	3 Years
17.	Sr. Engineer (Elex.)	Chennai	9 Years
18.	Engineer (Mech.)	Chennai	6.5 Years
19.	Sr. Engineer (Elex.)	Hyderabad	7 Years
20.	Engineer (Mech.)	Hyderabad	2 Years
21.	Engineer (Elex.)	Bangalore	5 Years
22.	Engineer (Mech.)	Bangalore	4 Years