	Emergency Response Plan	Number :	SE-EHS-ERP-001
		Ver:	1.0
		Date :	30-06-2023

SKYFRI ENERGY PVT LTD

ON SITE EMERGENCY PLAN

Revision History					
Version	Date of issue	Changes	Prepared by	Reviewed by	Approved by
1.0	30-06-2023	Emergency Response plan released under Skyfri file naming conventions	Abilaash P	Naveen K	G S Venkatesh

	Title – Emergency Response Plan	Number :	SE-HSE-ERP-001
		Revision:	1.0
		Date :	30-06-2023

1 INTRODUCTION

In today’s scenario the losses to human life and property, due to unexpected events cannot be ruled out. So, it is inevitable to plan for the unexpected for the betterment of an organization, family of an individual and the nation at large. The following objectives were focused while preparing this plan.

To ensure and safeguard employees in case of an outbreak of fire / any other incident requiring an evacuation of the site.

- To respond Emergency immediately.
- To save lives
- To minimize property losses
- To comply with statutory obligations
- To maintain business opportunity.
- To protect corporate image

1.1 Objective:

The objective of this Emergency Preparedness plan is to tackle any emergencies based on concept of Comprehensive Emergency Management.

1.2 Methodology:

The sequence of emergency response shall be as follows,

- Risk reduction
- Preparedness
- Mitigation
- Response
- Rehabilitation

Organization & Procedural framework as under is required,

1. Constitution & composition of committee.

	Title – Emergency Response Plan	Number :	SE-HSE-ERP-001
		Revision:	1.0
		Date :	30-06-2023

2. Resource availability in the following areas -

- 2.1 Fire
- 2.2 Assembly point
- 2.3 First Aid
- 2.4 Medical
- 2.5 Rescue operation

3. Declaring emergency.

4. Functions to be discharged by each member of the committee.

5. Coordinating with internal & external agencies.

6. Directing rescue operations.

7. Extending medical facilities.


8. Restore normalcy.

9. Documentation of the occurrence and steps to prevent similar incidences.

2 MOCK DRILLS.

EMERGENCY RESPONSE COMMITTEE:

S. NO	RESPONSIBILITY	SITE DESIGNATION	NAME
1	Chief Emergency controller	Site in charge	
2	Dy. Chief Emergency controller	Skyfri O & M Head	
4	Emergency controller instructor - HSE	HSE	
5	Supervisor HSE	Skyfri HSE In charge	
6	Supervisor - First Aid	Skyfri Engineer	
7	Supervisor - Evacuation	Security	

	Title – Emergency Response Plan	Number :	SE-HSE-ERP-001
		Revision:	1.0
		Date :	30-06-2023

3 RESOURCE AVAILABILITY:

3.1 Fire extinguisher:

The following portable fire extinguishers are available at site.


Fire Extinguisher & Assembly Point						
Sr no	Site	Nos.of Fire Extinguisher	Type		Capacity(K.G.)	
			Sodium-Bi-Carbonate Based Dry powder	Carbon dioxide type	Sodium-Bi-Carbonate Based Dry powder	Carbon dioxide type
1	Ground mount					
2						
3						
4						
5						
6	Rooftop					
7						
8						
9						
10						
11						

3.2 Assembly Point:

In case of Emergency Evacuation, all employees should assemble at designated Assembly point.

3.3 First Aid:

One first aid box is maintained at Control room/Offices.

	Title – Emergency Response Plan	Number :	SE-HSE-ERP-001
		Revision:	1.0
		Date :	30-06-2023

3.4 Medical

Depending on site we must call for ambulance for shifting the casualties.

3.5 Rescue operations Team members:

	Title – Emergency Response Plan	Number :	SE-HSE-ERP-001
		Revision:	1.0
		Date :	30-06-2023

4 FUNCTIONS OF COMMITTEE MEMBERS:

4.1 *Chief Emergency Controller: SITE IN CHARGE*

- Responsible for the overall effective & swift emergency response.
- Declares the emergency based on information received from reception security or from any other staff.
- Informs building owner about the emergency and call fire brigade/ police/ bomb squad.
- Arrange all required facilities through different teams for the necessary medical aid, manpower, money, conveyance etc.
- Oversees the functioning of several subordinate teams.
- Informs to the statutory authorities if necessary.
- After the emergency is over, declares the normal situation and rehabilitate the office activity.

4.2 *Dy. Chief Emergency controller - Skyfri O&M Head*

- In absence of Chief Emergency controller, Dy. Chief Emergency controller will act as Chief Emergency controller.
- Helps the Chief emergency controller in swift emergency response.
- Coordinates with all the subordinate teams.
- Acts as a catalyst in expeditious emergency response.

4.3 *Emergency Controller Instructor*

The Chief Emergency Controller & Dy. Chief Emergency Controller shall inform about the emergency situation to the Emergency Controller Instructor-Projects & HSE on exclusive extension number or his mobile number and wait for instructions from the Emergency Controller Instructor-Projects to handle and control the Emergency for the Catastrophic emergencies, accidents & Incidents

4.4 *Site Supervisors*

- Site controllers shall communicate Chief Emergency Controller instructions to their team members about the emergency and ensure evacuation.
- Site controller shall coordinate with the external fire brigade/ police/ bomb squad on arrival to the premises.

	Title – Emergency Response Plan	Number :	SE-HSE-ERP-001
		Revision:	1.0
		Date :	30-06-2023

5 DECLARING EMERGENCY:

In case of any such major hazard, which is likely to cause extensive damage to property or human life, the Chief Emergency Controller shall communicate the employees and make the employees aware of the situation. Inform Dy. Chief Emergency Controller, Engineers, and Site supervisors to activate the emergency procedure and arrange to assemble all staff at Assembly point.

5.1 *Fire/ Explosion:*

On observing fire, by any employee, he will immediately caution others by shouting, “FIRE...FIRE”, and inform Chief Emergency Controller. Chief Emergency Controller depending upon the situation declares emergency evacuation. Try to extinguish the fire with portable fire extinguisher.

5.2 *Earthquake:*

On observing earth quake alert all employees and immediately start evacuating the building.

5.3 *Building / Its part failure:*

On observing part of building collapse, the employees shall caution each other and run towards safe location/ safe exit. Chief controller shall be informed about the incident and he will activate the emergency procedure.

6 CO-ORDINATION WITH INTERNAL & EXTERNAL AGENCIES:

After taking stock of the situation based on feedback received from various members of central committee the Chief Emergency Controller shall decide, if any help needs to be sought from neighboring/external agencies. This should also be made known to all employees through different communication channels, public address system, etc. Working indifferent shift to avoid confusion.

7 DIRECTING RESCUE OPERATIONS:

All the members of Emergency Committee shall work under instructions from Chief Emergency Controller and shall take decisions in their areas of operation, however they shall keep the Chief Emergency Controller informed about the action being initiated and update him on the same.

8 MEDICAL FACILITIES:

- Administrative in charges or Site In charge will take the charge of situation and treat Minor Injuries locally with the available first aid kit.
- Arrange for ambulance and shift casualties to the nearby hospital.

	Title – Emergency Response Plan	Number :	SE-HSE-ERP-001
		Revision:	1.0
		Date :	30-06-2023

9 DECLARING NORMALCY:

Chief Emergency Controller shall decide and declare the normalcy after getting clearance from fire brigade/ police/. Chief Emergency Controller shall inspect the damaged building along with emergency response team before allowing employees to enter in to the building.

10 DOCUMENTATION:

The Chief Emergency Controller on completion of the activities, keep track of the events and record the same. He shall inform the Management / Occupier about the occurrence and in consultation with all committee members suggest / recommend additional facilities / amendment in procedures required to meet such situation in future.

11 MOCK DRILLS:

To ensure smooth, efficient and panic free response from employees at the time of emergency, mock drills shall be conducted on quarterly basis. The mock drills shall help modify and improve the procedures / action plan for emergency preparedness. It is to be recorded in Mock drill observation report

12 LIST OF EMERGENCY SITUATIONS:

- i. Electrical Shock / Electrocution
- ii. Human Injury
- iii. Fire due to Electrical Short Circuit
- iv. Fire due to Hot Work (Gas Cutting / welding)
- v. Fire & Explosion at substation
- vi. Fire & Explosion at DC field
- vii. Injury due to falling from height / hitting on objects
- viii. Snake bite / Insect Bite
- ix. Heat/ Sun Stroke
- x. Thunder/ Lighting
- xi. Cyclone/ Strom / Heavy Wind blow
- xii. Earth Quake
- xiii. Vehicle accident during victim Transportation
- xiv. Hitting of water spray on personnel
- xv. Chemical exposure during Maintenance activity
- xvi. Emergency during night work on weekends

	Title – Emergency Response Plan	Number :	SE-HSE-ERP-001
		Revision:	1.0
		Date :	30-06-2023

12.1 ELECTRICAL SHOCK / ELECTROCUTION

12.1.1 Emergency communication system and channel of communication

Operation : Electrical maintenance

Nature of accidents or emergency situations : Electric shock

Emergency equipment's/Materials required : First aid box


12.1.2 Procedure: -

1. Alarm people nearby and prevent people entering into the zone.
2. If the Victim is still in contact with the electrical current, do not touch the person and immediately turn off the electrical source.
3. If you cannot disconnect the power source, try to separate the victim from the power source with a nonconductive object, such as wood handled broom.



Figure 1 :Separate the victim from the power source with a nonconductive object

4. Have some call for Emergency contact number and site in charge, if nobody is with you please come out and call to 108.
5. Administer first Aid as appropriate - In case of CPR required we have trained first Aiders. So please call them immediately
6. Give CPR (Cardio Pulmonary Resuscitation) to the victim as given below,
 - Place the victim on the plain surface

	Title –	Number :	SE-HSE-ERP-001
	Emergency Response Plan	Revision:	1.0
		Date :	30-06-2023

- Shake the victim, if there is no response, start ‘CPR’ immediately.
- Loosen the shirt.
- Tilt the victim’s head/Lift the person’s chin -to open victim’s airway.
- If there are no signs of breathing, pinch victim’s nose closed and give two full breaths into victim’s mouth.
- If there is no pulse, begin chest compressions as follows:
- Keep your palm at the center of the chest & Give 30 times’ heart
- Compression Until the victim gets Conscious



Figure 2 : CPR

7. Call the Ambulance and send the person to hospital for further treatment.
8. Please ensure that you have worn required PPE's.

	Title – Emergency Response Plan	Number :	SE-HSE-ERP-001
		Revision:	1.0
		Date :	30-06-2023

12.2 HUMAN INJURIES

12.2.1 Emergency communication system and channel of communication

OPERATION	: General Operation
Nature of accidents (or) emergency situations	: Injury, Fractures, vehicle accident
Emergency equipment's/Materials required	: First-aid box, Stretcher, four Wheel Vehicle

12.2.2 Procedure

In spite of putting best efforts some technical failure or human error may lead to personal Injury at site. Guidelines for action to be taken in case of personal injuries are as under

1. Quote your location, name and Employee number while reporting any accident / incident or near misses states the nature of accident or incident. It is equally important to report even when there is no injury or damage
2. Inform the site in charge and site Engineers on mobile
3. Provide the relevant First Aid if competent to do so / shift the victim to the nearest safe area
4. Security / Site in charge will deploy first aider available at site to the incident location to provide necessary first Aid
5. Stay with the injured person until Medical Assistance arrives
6. Site in charge will ensure proper treatment to victim and report it to the client and Skyfri Management as per the incident reporting procedure

	Title – Emergency Response Plan	Number :	SE-HSE-ERP-001
		Revision:	1.0
		Date :	30-06-2023

12.3 FIRE DUE TO ELECTRICAL SHORT CIRCUIT


Considering the use of combustible materials, electrical cable panels, Malfunction in the transformers etc. may lead in to Fire and fire due to short-circuit at utility solar site cannot be ruled out. Guidelines for actions to be taken in case of fire are as under:

12.3.1 Emergency communication system and channel of communication

Operation	: General Operation
Nature of accidents (or) emergency situations	: Fire due to electrical short circuit
Emergency equipment's/Materials required	: First-aid box, Fire Extinguisher (DCP)

12.3.2 Procedure: -

1. Alarm people nearby and prevent people entering into the burning Zone by shouting “Fire, Fire, Fire”.
2. Inform the persons near to you. Also contact security and site in charge.
3. Give your Location, Name and E. C. No, Speak slowly and calmly.
4. Do not Panic, there is always sufficient time for an emergency telephone call.
5. Try to put out the Fire with the nearest available Portable Fire Extinguisher if you know how to operate.
6. Go to the nearest Site Office and try to inform more people for any help.
7. Walk, do not Run and Follow the shortest escape route if it is totally safe to do so.
8. Do not make any attempt for collecting valuables or personal goods.
9. If it is inside the MCR, ICR after informing the workmen rush to the designated assembly point
10. (Make Assembly point minimum 100 ft away from the Site Location with sign board - “Assembly Point”)
11. Switch off the Electrical power.

	Title –	Number :	SE-HSE-ERP-001
	Emergency Response Plan	Revision:	1.0
		Date :	30-06-2023

12. Extinguish the fire by using Fire extinguisher (DCP) nearby by choosing the right Fire Extinguisher for the class of fire as mentioned in the figure-3.



Figure 3 : Use of Right Fire Extinguisher

13. Follow the procedure of PASS for using the Portable Fire Extinguisher and extinguishing the fire as shown in the figure 4.

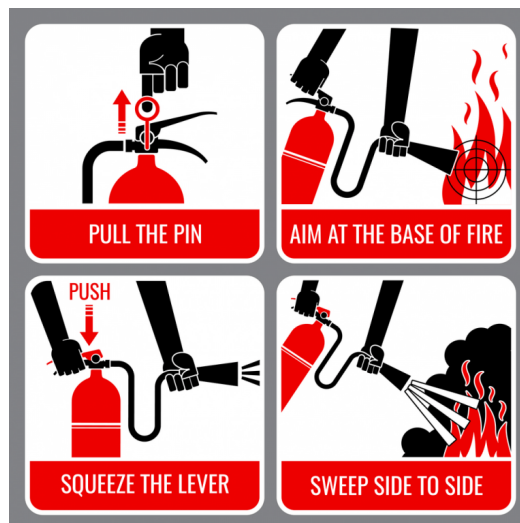


Figure 4 : USE of Portable Fire Extinguisher (PASS) Method

	Title – Emergency Response Plan	Number :	SE-HSE-ERP-001
		Revision:	1.0
		Date :	30-06-2023

14. Remove if any combustible materials available nearby.
15. If there is any victim, give first-aid to the victim as given below,
16. Pour running water on the burned part.
17. Don't apply any ointment.
18. Put only bandage over the affected part.
19. Under a circumstance don't put your own Life at risk.
20. If the Fire appears too large to tackle with fire extinguishers or available resources, leave it to the qualified Fire Fighting Services.
21. Leave the Building / Site in an orderly manner and move to the designated assembly point
22. Call the Local Fire Service

	Title – Emergency Response Plan	Number :	SE-HSE-ERP-001
		Revision:	1.0
		Date :	30-06-2023

12.4 FIRE DUE TO HOT WORK (GAS CUTTING & WELDING)

12.4.1 Emergency communication system and channel of communication

OPERATION	: Gas cutting & welding
Nature of accidents or emergency situations	: Fire due to Gas leakage & Welding spark
Emergency equipment's/Materials required	: First aid box Extinguishers (DCP / Co2)

12.4.2 Procedure: -

1. Alarm people nearby and prevent people entering into the burning zone
2. Close the Gas cylinder valve
3. Put Fire blanket over the Gas Cylinder valve.
4. If the fire is not Put off, extinguish the fire by using nearby Fire extinguisher as mentioned above in Fire due to Electrical Short Circuits point no: 12 & 13.
5. Remove any combustible materials kept nearby.
6. If there is any victim, give first-aid as given below,
7. Pour running water on the burned part
8. Don't apply any ointment.
9. Put only bandage over the affected part.
10. Call the Ambulance.
11. Inform Site In charge/Engineer-in-charge
12. Send the victim to the nearby hospital.

	Title – Emergency Response Plan	Number :	SE-HSE-ERP-001
		Revision:	1.0
		Date :	30-06-2023

12.5 FIRE & EXPLOSION AT SUB STATION

12.5.1 Emergency communication system and channel of communication

Operation	: Fire in the Switchyard
Nature of accidents (or) emergency situations	: Fire due to electrical short circuit & malfunction of electrical Equipment
Emergency equipment's/Materials required	: First-aid box, Fire Extinguisher (DCP) & (Co2)

12.5.2 Procedure

1. Immediately people who are working in the site area are must be exit through the Emergency Exit Route
2. All the supply feeders want to be turn-off immediately.
3. If the fire is on starting stage, trained person can operate the fire extinguisher to stop the fire.
4. Extinguish the Inspection fire by using the Portable fire Extinguisher as mentioned above in point 12 & 13 of Fire due to short circuits.
5. If the fire is not come under control, immediately inform to the Fire Services Dept.
6. ERC Members want to search all over the site area and shift the people to Emergency Assembly Point.
7. After the clearance of fire report from the fire services dept. allow the people for come back to the work are

	Title – Emergency Response Plan	Number :	SE-HSE-ERP-001
		Revision:	1.0
		Date :	30-06-2023

12.6 FIRE & EXPLOSION AT DC - FIELD

12.6.1 Emergency communication system and channel of communication

Operation	: Fire & Explosion in the ICR Blocks and ICR
Nature of accidents (or) emergency situations	: Fire due to electrical short circuit in Inverters, Short Circuit in SMB & Solar module Cables, Wild Fire due to ripen grass
Emergency equipment's/Materials required	: First-aid box, Fire Extinguisher (DCP) & (Co2)

12.6.2 Procedure

1. Immediately people who are working in the site area are must be exit through the Emergency Exit Route.
2. Site engineer want to find out the place which get fire.
3. The supply from the SSM (sunny string monitor) box want to be turn-off immediately, if required inverter's also want to be turn-off.
4. Trained person can operate the fire extinguisher to stop the fire if it is in control.
5. If the fire is not in control inform to the fire services dept. to turn-off the fire.
6. ERC Members want to search all over the site area and shift the people to Emergency Assembly Point.
7. After the clearance of fire report from the fire services dept. allow the people for come back to the work area.

	Title – Emergency Response Plan	Number :	SE-HSE-ERP-001
		Revision:	1.0
		Date :	30-06-2023

12.7 FALL FROM HEIGHT / HITTING ON MATERIALS

12.7.1 Emergency communication system and channel of communication

Communication systems will be used between the suspended worker and supervisor / rescue team

- Direct voice communication
- Mobile Phone

12.7.2 Emergency Contact:

In the event of an emergency / fall from height the WAH supervisor shall immediately alert:

- Client Safety department (Rooftop sites)
- Emergency Response Team
- HSE Manager

12.7.3 The actual plan to rescue the suspended employee, as per availability

- Ladder
- Man Lift
- Crane with Basket
- Tripod
- Descent Rescue Kit
- Suspended Access Equipment
- Climbing Rope Rescue System
- Pull employee up through floor, slab or roof
- Affix rope, cable, etc. to "D" ring of suspended employee. Raise suspended employee slightly then unhook their primary lanyard.
 - Raise suspended employee
 - Lower suspended employee

OPERATION : Material handling & Height work

Nature of accidents or emergency situations : Injury due to falling from height/Hitting on material

12.7.4 Procedure: -

1. Rescue the injured person
2. Upon rescue from height, call ambulance, the employee shall be transported to the hospital for examination and observation. By the time ambulance arrives,

	Title – Emergency Response Plan	Number :	SE-HSE-ERP-001
		Revision:	1.0
		Date :	30-06-2023

3. Shift the victim to a well-ventilated area.
4. Give first-aid to the victim as given below,
 - a) If it is bleeding, stop the bleeding by using cotton & put bandage over the affected Part.
 - b) If is a Fracture on hand / leg, place wooden piece under the fractured part & tie it with bandage.

12.8 SNAKE BITE / INSECT BITE

12.8.1 Emergency communication system and channel of communication

OPERATION	: MATERIAL HANDLING
NATURE OF ACCIDENTS OR EMERGENCY SITUATIONS	: Snake bite / Insect bite (Bee, Wasp & Scorpion)
Emergency Equipment's/Materials required	: First aid box & Anti- Venom kit (Anti-venom kit is to be arranged at nearby hospital/Medical shop. Anti-venom is to be administered by (Qualified physician only)

12.8.2 Signs and Symptoms Snake bite

Depending on the type of snake, signs and symptoms of a bite may include:

1. Puncture marks at the wound (single or double)
2. Redness and swelling
3. Severe pain at the bite site
4. Nausea and vomiting
5. Labored breathing
6. Disturbed vision Increased salivation and sweating
7. Numbness or tingling of face and/or limbs
8. Paleness and feeling cold (shock)



	Title – Emergency Response Plan	Number :	SE-HSE-ERP-001
		Revision:	1.0
		Date :	30-06-2023



Figure 5 : Identification of Venomous & Non-Venomous Snake Bite

12.8.3 Procedure:

1. Shift the victim to a well-ventilated area
2. Give first-aid to the victim as given below,
3. Tie the bite zone tightly with thin rope just above the
4. Bite zone to prevent further spreading of poison.
5. Shift the victim by using stretcher. Don't allow the victim to walk (or) run.
6. Don't give anything to drink
7. Call the ambulance.
8. If it is Snake bite Inform particular hospital Management to get ready for the Anti-venom treatment.
9. If it is insect (Scorpion, Bee or Wasp) bite,
10. Remove stinger(s)
11. Wash the sting with soap and water
12. Apply Ice cubes over the bite zone.

	Title –	Number :	SE-HSE-ERP-001
	Emergency Response Plan	Revision:	1.0
		Date :	30-06-2023

13. Inform Site In charged/Engineer-in-charge PM
14. Send the victim to the hospital where Anti-venom kit is Available.

WHEN A SNAKE BITES

IN TELANGANA, MAHABUBNAGAR LEADS WITH 185 SNAKE BITE FATALITIES, FOLLOWED BY 88 AND 83 DEATHS IN EAST GODAVARI AND KURNOOL RESPECTIVELY

DO Reassure the patient | Consult a doctor, explain the symptoms clearly

DONT	Waste time by taking patients to quacks	Try to cut or suck the venom out	Try home-made remedies on the victim	Try to administer anti-venin without a doctor's presence
-------------	---	----------------------------------	--------------------------------------	--

Snake bites are similar to road accidents. Negligence and the lack of awareness are [the] main reasons for snake-bite related deaths. And yes, we can avoid such accidents

AVINASH VISVANATHAN,
GENERAL SECRETARY, FRIENDS OF SNAKES SOCIETY

MAJOR KILLERS

<p style="color: blue; font-weight: bold;">SPECTACLED COBRA</p> <p>Locally known as naga paamu, thrachu paamu</p> <p>Distinguishing feature(s) Variants of brown with a hood</p> 	 <p style="color: blue; font-weight: bold;">RUSSELL'S VIPER</p> <p>Locally known as raktha pinjara</p> <p>Distinguishing feature(s) Regular oval patches throughout the body</p>	 <p style="color: blue; font-weight: bold;">COMMON KRAIT</p> <p>Locally known as katla paamu</p> <p>Distinguishing feature(s) Black snake with white bands on the body</p>	 <p style="color: blue; font-weight: bold;">SAW-SCALED VIPER</p> <p>Locally known as chinna pinjara</p> <p>Distinguishing feature(s) Small snake with criss-cross lines forming diamond pattern</p>
--	---	--	---

Figure 6 : Snake Bite

	Title – Emergency Response Plan	Number :	SE-HSE-ERP-001
		Revision:	1.0
		Date :	30-06-2023

12.9 SUN STROKE

12.9.1 Emergency communication system and channel of communication

OPERATION	: Working at height or open area in maintenance activity.
Nature of accidents (or) emergency situations	: Sun stroke / Heat stroke
Emergency equipment's/Materials required	: First aid box require for primary treatment.

12.9.2 Procedure: -

1. Shift the victim to a well-ventilated area.
2. Loosen the clothing.
3. Sprinkle cold water on the face (or) pour water over the body.
4. If the victim is at height, make arrangement for Retractable fall arrestor
5. Tie 'PP' rope between two vertical members of the Tower in double fold.
6. Hook the retractable fall arrestor at the centre to avoid any hitting against
7. Vertical members while shifting the victim down.
8. Don't give anything to drink
9. Call the Ambulance
10. Inform Site In charge/Engineer-in-charge
11. Send the victim to the nearest hospital.

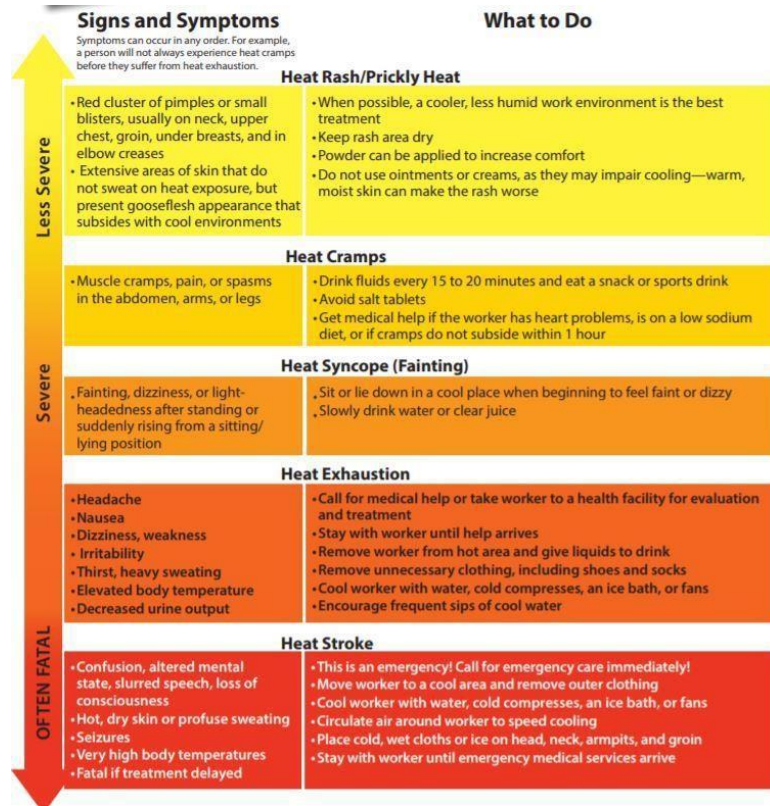


Figure 7 : Heat / Sun Stroke Emergency Procedure

	Title – Emergency Response Plan	Number :	SE-HSE-ERP-001
		Revision:	1.0
		Date :	30-06-2023

12.10 LIGHTNING / THUNDER

12.10.1 Emergency communication system and channel of communication

Operation : General Operation/Maintenance. Nature of accidents or emergency situations : Lightning / Thunder

Emergency Equipment's/Materials required : First aid box

12.10.2 Procedure: -

1. Stop the work immediately
2. Give instruction to workers working on the tower
3. Get shelter under the temporary shelter. (Don't get shelter under Tower / Tree / any height pole
4. When there is no shelter, avoid the highest object in the area.
5. If only isolated trees are nearby, bend down in the open, keeping twice as far away
6. From isolated trees as the trees are high.
7. Avoid leaning against vehicles. Get off bicycles and motorcycles
8. Avoid hilltops, open spaces, and wire fences, metal clothes lines
9. If there is any Lightning victim, Start CPR immediately. Refer the previous procedure for starting 'CPR')
10. Inform Site In charge/Engineer-in-charge
11. Send the victim to the hospital nearby.

	Title – Emergency Response Plan	Number :	SE-HSE-ERP-001
		Revision:	1.0
		Date :	30-06-2023

12.11 CYCLONE / STORM

12.11.1 Emergency communication system and channel of communication

Operation : General Operation

Nature of Accident/ Emergency situation : Cyclone/ Storm

Emergency Equipment's/ Material Required : First Aid Kit

12.11.2 Procedure

1. Get shelter in concrete building
2. Don't allow anyone to go out of the room
3. If there is any victim, give first-aid to the victim as given below
 - If there is any bleeding, stop the bleeding by using cotton & put bandage over the affected Part
 - If there is any Fracture on hand / leg, place wooden piece under the fractured Part & tie with bandage.
4. Call the ambulance
5. Inform Site In charge/Engineer-in-charge.
6. Send the victim to the nearest hospital.

	Title – Emergency Response Plan	Number :	SE-HSE-ERP-001
		Revision:	1.0
		Date :	30-06-2023


12.12 EARTH QUAKE

12.12.1 Emergency communication system and channel of communication

Operation	: General Operation
Nature of Accident/ Emergency situation	: Earth Quake
Emergency Equipment's /Material Required	: Portable stretcher & First Aid Box

12.12.2 Procedure

1. Alert all the site personnel.
2. Evacuate everyone to Plain surface.
3. If there is any victim during evacuation, give first-aid as given below:
4. If there is any bleeding, stop the bleeding by using cotton & put Bandag over the affected Part.
5. If there is any Fracture on hand / leg, place wooden piece under the Fractured part & tie with bandage.
6. Call the Ambulance.
7. Inform Site In charge/Engineer-in-charge
8. Send the victim to the nearest hospital.

	Title – Emergency Response Plan	Number :	SE-HSE-ERP-001
		Revision:	1.0
		Date :	30-06-2023

12.13 VEHICLE ACCIDENT DURING VICTIM TRANSPORTATION

12.13.1 Emergency communication system and channel of communication

Operation	: Transporting Victim to Hospital
Nature of Accident/ Emergency situation	: Emergency in case of transportation of personnel
Emergency Equipment's /Material Required	: First aid box require for primary treatment.

12.13.2 Procedure

1. Shift the victim to a well-ventilated area.
2. Loosen the clothing.
3. Give positive morale support to victims.
4. Licensed & experienced driver to be engage in operating vehicle.
5. Call the Ambulance
6. Inform Site In charge/Engineer-in-charge
7. Send the victim to the nearest hospital.

	Title – Emergency Response Plan	Number :	SE-HSE-ERP-001
		Revision:	1.0
		Date :	30-06-2023

12.14 HITTING OF WATER SPRAY ON PERSONNEL

12.14.1 Emergency communication system and channel of communication

Operation : Solar Module Cleaning

Nature of Accident/ Emergency situation : Hitting of hose pipe on workforce body part

Emergency Equipment's /Material Required: First aid box require for primary treatment

12.14.2 Procedure

1. Shift the victim to a well-ventilated area.
2. Proper clamping of hose pipe to be done.
3. Care to be taken while using water sprinklers
4. Give positive morale support to victims.
5. Regular awareness regarding hitting of hose pipe to be done through TBT.
6. Call the Ambulance
7. Inform Site In charge/Engineer-in-charge
8. Send the victim to the nearest hospital.

	Title – Emergency Response Plan	Number :	SE-HSE-ERP-001
		Revision:	1.0
		Date :	30-06-2023

12.15 CHEMICAL EXPOSURE DURING MAINTENANCE ACTIVITY

12.15.1 Emergency communication system and channel of communication

Operation : Operation & Maintenance Activity

Nature of Accident/ Emergency situation : Exposure of chemical during operation& maintenance

Emergency Equipment's /Material Required: First aid box require for primary treatment

12.15.2 Procedure

1. Shift the victim to a well-ventilated area.
2. All required PPEs like nose mask, safety goggles, and chemical resistance hand gloves to be wear.
3. Care to be taken while engage in such job.
4. MSDS of all chemical should be available at site & it should be displayed.
5. Give positive morale support to victims.
6. Regular awareness on MSDS to be done which chemical used inside the plant.
7. Call the Ambulance
8. Inform Site In charge/Engineer-in-charge
9. Send the victim to the nearest hospital

12.16 Emergency during night work on weekends

12.16.1 Emergency communication system and channel of communication

Operation : Solar Module Cleaning/PM Activity/Others

Nature of Accident/ Emergency situation : Snake bite/electrocution/Fire/Others

Emergency Equipment's /Material Required: First aid box require for primary treatment

12.16.2 Procedure

1. Shift the victim to a well-ventilated area.
2. All required PPEs like nose mask, hand gloves to be wear.

	Title – Emergency Response Plan	Number :	SE-HSE-ERP-001
		Revision:	1.0
		Date :	30-06-2023

3. Care to be taken while engage in such job.
4. Inform site manager
5. Give positive morale support to victims.
6. Perform first aid treatment
7. Call the Ambulance
8. Inform Site In charge/Engineer-in-charge
9. Send the victim to the nearest hospital

13 Emergency communication system and channel of communication.


An Important key to effective emergency response is an effective communications system. At site Telephone, mobile will be used for communication during emergency.

Whosoever is observing any emergency shall inform about emergency to:

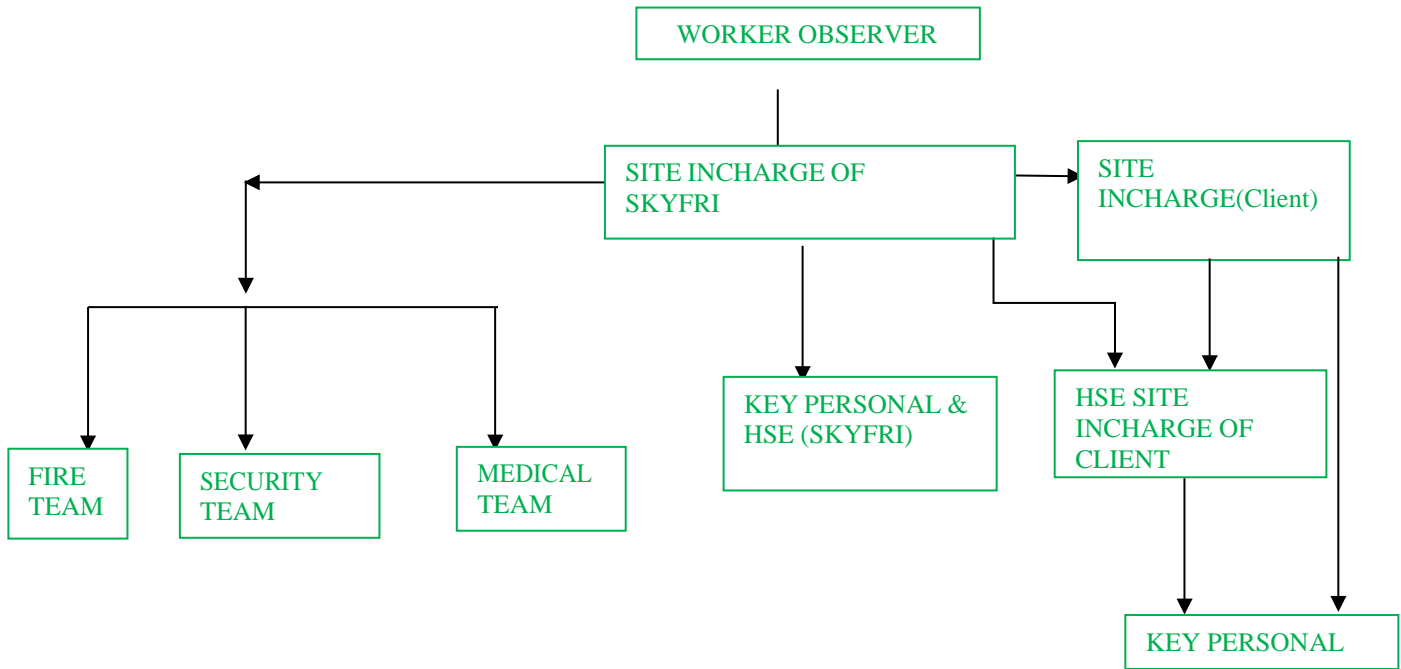
- Medical Phone No..
- Security Control Room Phone No..
- Fire Service Phone No.
- Lead Engineer/Supervisor/Site In charge.


Above team number is displayed in emergency contact number.

Lead engineer will confirm the information with emergency services and also inform to site in charges and contractors' site in charges.

	Title –	Number :	SE-HSE-ERP-001
	Emergency Response Plan	Revision:	1.0
		Date :	30-06-2023

13.1 Emergency Communication matrix:

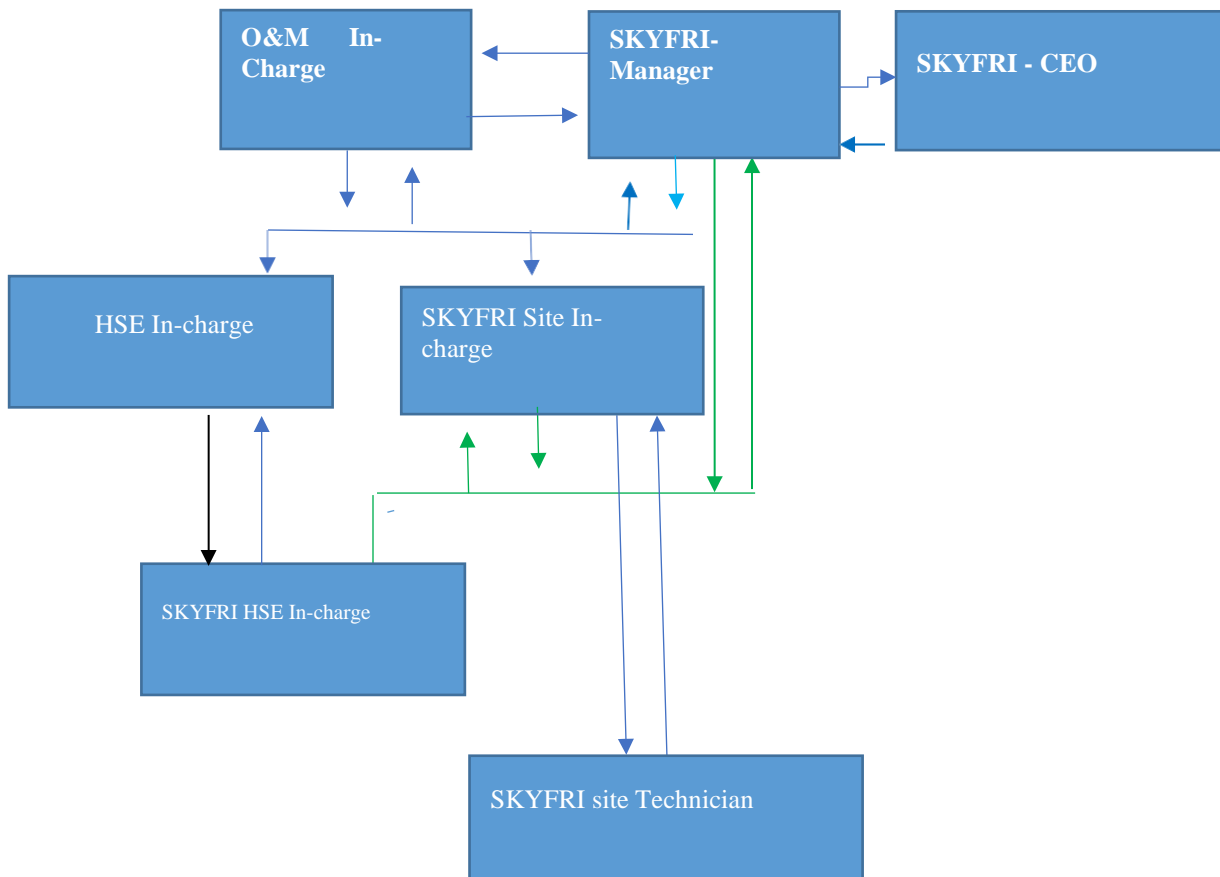



	Title –	Number :	SE-HSE-ERP-001
	Emergency Response Plan	Revision:	1.0
		Date :	30-06-2023

13.2 Emergency Committee Communication Flow Chart:

An emergency organization is established based on nature of emergency at site.


The organ gram for the emergency management team showing the reporting of various key members as below



	Title – Emergency Response Plan	Number :	SE-HSE-ERP-001
		Revision:	1.0
		Date :	30-06-2023


Annexure - I: Emergency Contact Numbers

Emergency contact No.			
Sr. No.	Name	Contact No.	Company
1			
2			
3			
4			
5			
6			



	Title – Emergency Response Plan	Number :	SE-HSE-ERP-001
		Revision:	1.0
		Date :	30-06-2023

Annexure – II: Emergency Evacuation Plan -Site, Ground Mount

Emergency Evacuation Plan -Site, Roof top

	Title – Emergency Response Plan	Number :	SE-HSE-ERP-001
		Revision:	1.0
		Date :	30-06-2023

Annexure - II: Emergency Services Number

1	Fire Services		
3	Ambulance Services		
4	Police		