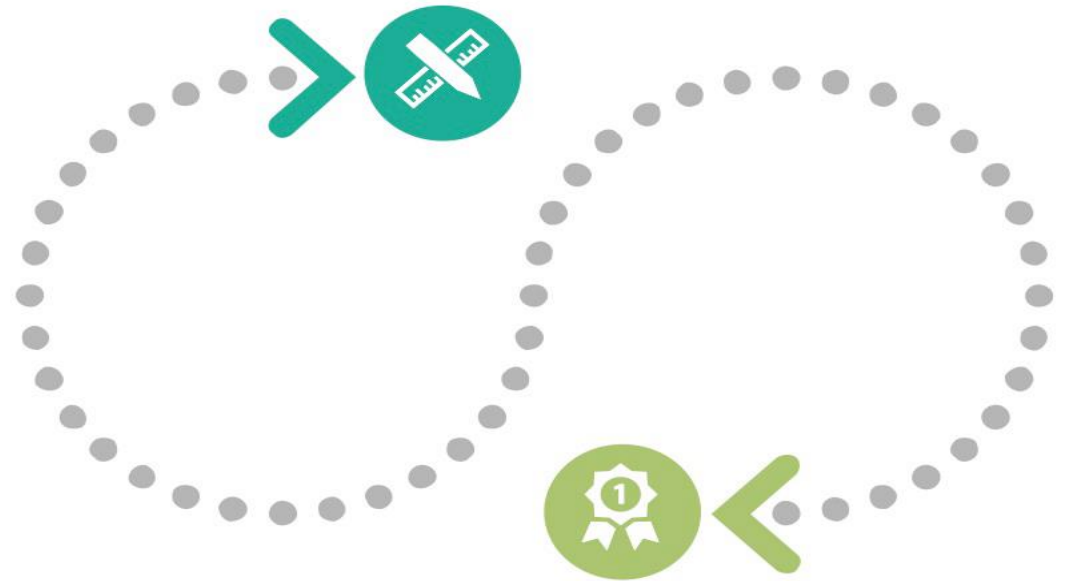
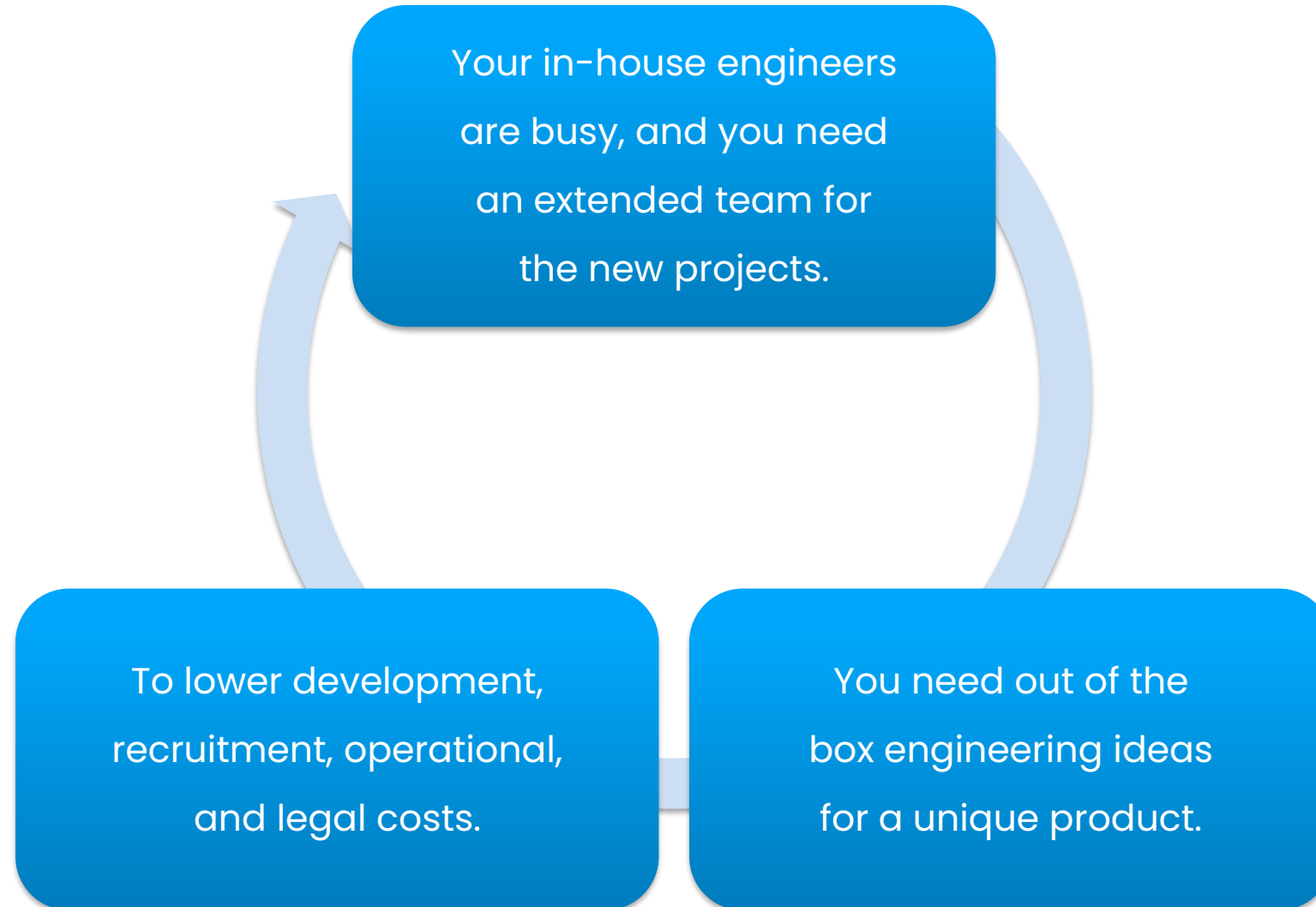


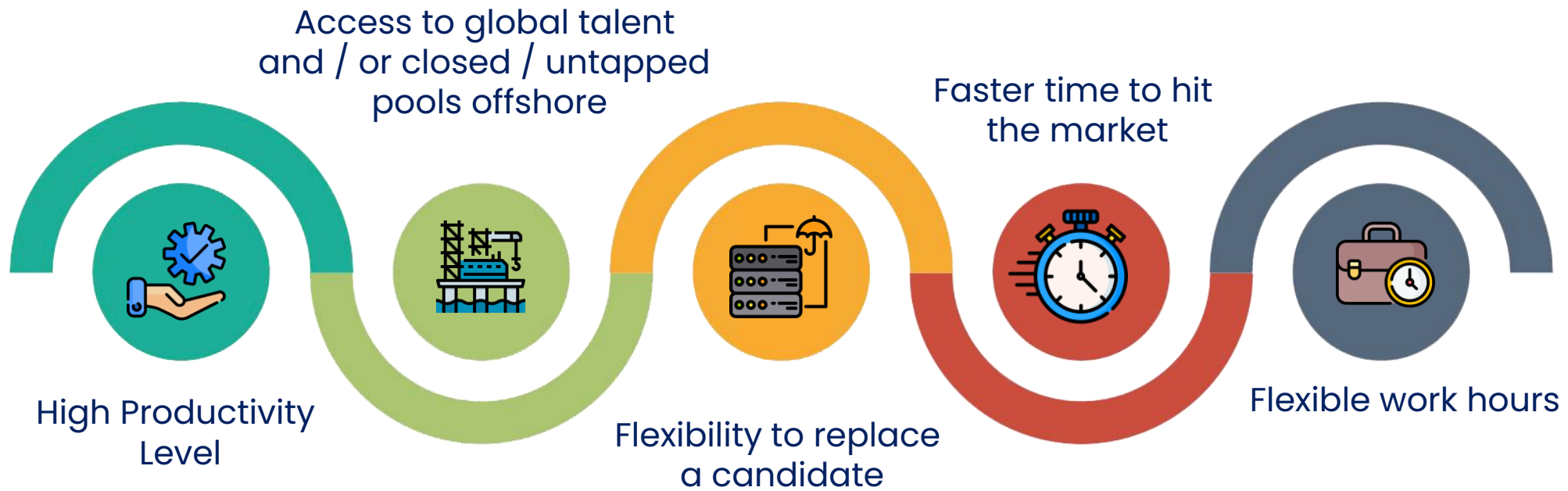


# CADOpt Technologies – Overview & Engineering Staff Augmentation

Engineering staff augmentation services enable companies to hire tech talents globally either on a short- or long-term basis and manages augmented teams.







Hire a partner that provides remote developers with their separate team rooms with all the necessary facilities.



Identify talent gaps within your organization

Select projects that have limited time requirement



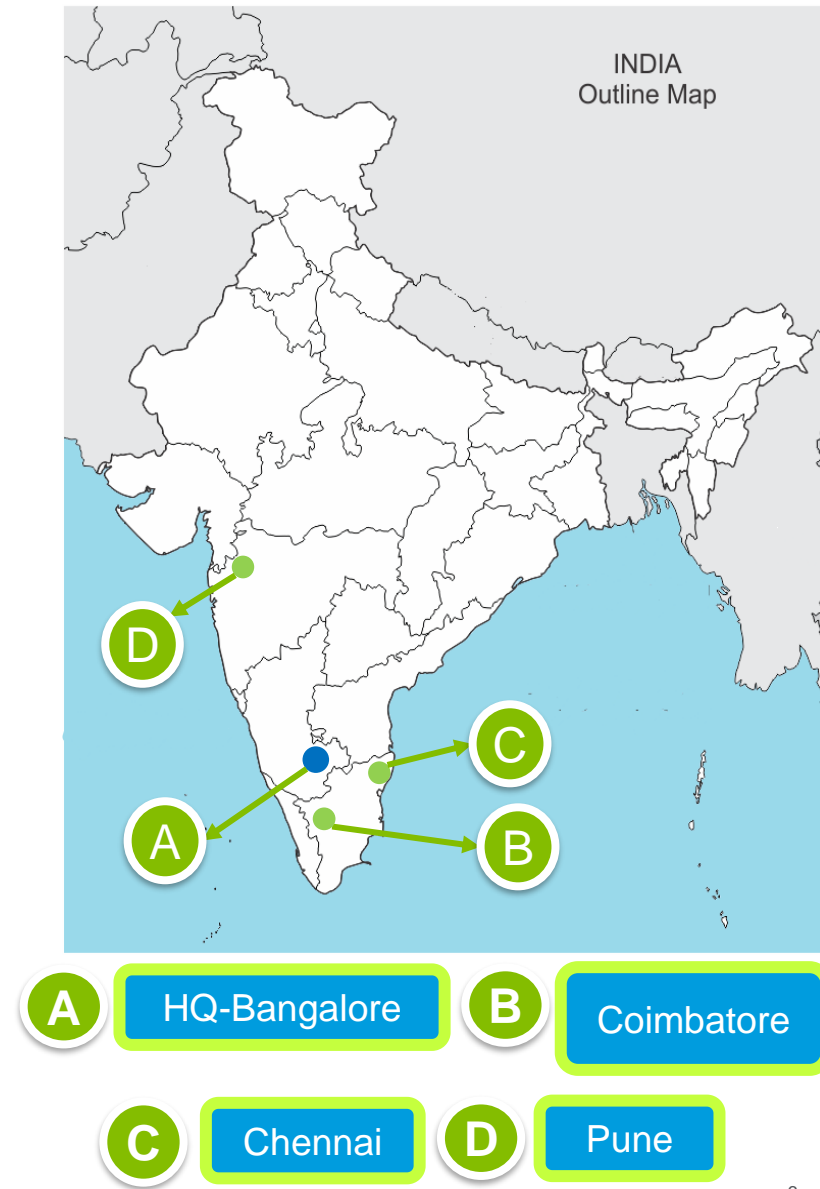
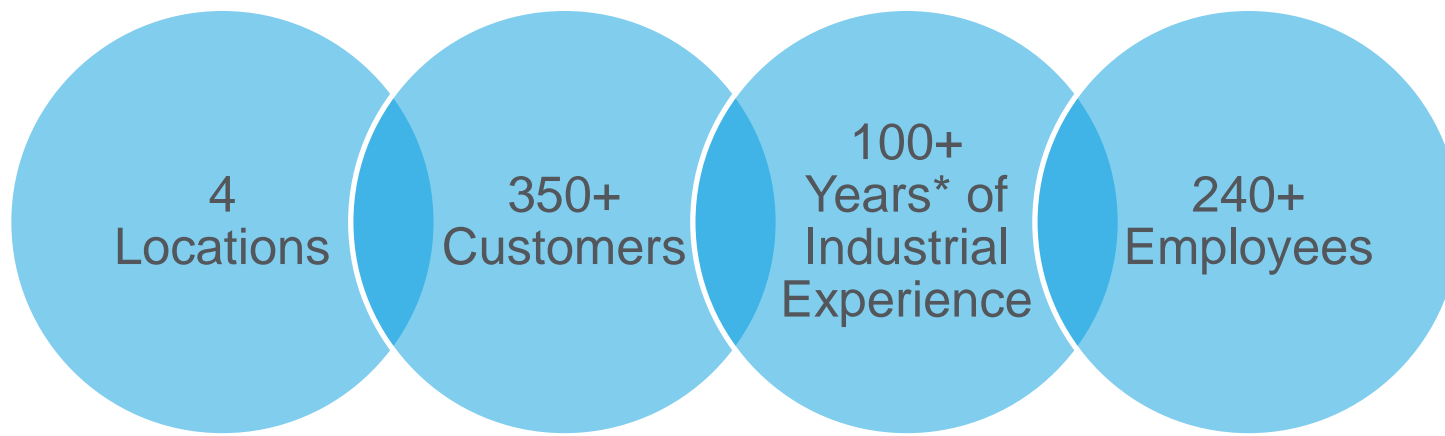
Identify unique skill-set requirement

**CADOpt Technologies** established in 2014 is into providing engineering services and solutions, helping clients navigate through the challenging environment and extensively equip themselves with tools and techniques in order to be on par with the aggressive market competition.

CADOpt's goal is to break down today's most common barriers through **CAD | PLM | IoT | AR technologies & Digital processes**, combined with our engineering solutions & support, enabling the analysis, management & communication of information across cross-functional groups so that decisions can be made faster & with greater accuracy.

CADOpt has always been instrumental in rendering the technology essentials which include software platform, innovation & services while bridging the gap in **“Need --> Solution”**

As always, we remain dedicated to our clients' success, we pursue innovation that matters, and we set the standard for trust and responsibility.



2014	2015	2016	2017	2018	2019
<ul style="list-style-type: none"> <li>Incorporated in Bangalore</li> <li>PTC <i>Authorized Training Centre (ATC)</i></li> </ul>	<ul style="list-style-type: none"> <li>Became PTC Reseller (VAR)</li> <li>Started business in Pune</li> <li>Overseas service delivery</li> <li>Became <i>PTC WPP</i></li> </ul>	<ul style="list-style-type: none"> <li>Started business in Chennai &amp; Coimbatore</li> <li>Reached 50+ employees</li> </ul>	<ul style="list-style-type: none"> <li>New Office Setup (80+ Seating) in Bangalore</li> <li>Extended business to Mumbai</li> <li>3D Printer and IoT business</li> </ul>	<ul style="list-style-type: none"> <li>Reached 200+ employees</li> <li>New Office Setup (80+ Seating) in Coimbatore</li> <li>New office setup in Pune</li> </ul>	<ul style="list-style-type: none"> <li>Expansion of Bangalore Office to 160-Seater Capacity</li> <li>Expanding Business in IoT</li> <li>Started Office in Gurgaon</li> <li>Started Business in A&amp;D</li> </ul>
2020	2022	2022	2023		
<ul style="list-style-type: none"> <li>2<sup>nd</sup> office in Bangalore.</li> <li>ODC started for one of the industry Major with 100+ employees and growing</li> </ul>	<ul style="list-style-type: none"> <li>Launched CFM (Windchill WGM) for ZWCAD, BRICSCAD, SOLID EDGE, ARES</li> </ul>	<ul style="list-style-type: none"> <li>Became Reseller of Graebert Products</li> </ul>	<p>Became reseller of Luxion Inc. Products viz. KeyShot</p>		

Augmentation We are Supporting Currently:





# Benefits of Resource Augmentation



**Swiftness and Expertise**



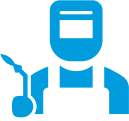
**Concentrating on core process rather than the supporting ones**



**Risk-sharing**



**Reduced Operational and Recruitment costs**



**Immediate availability & Replacement of skilled suitable candidates.**



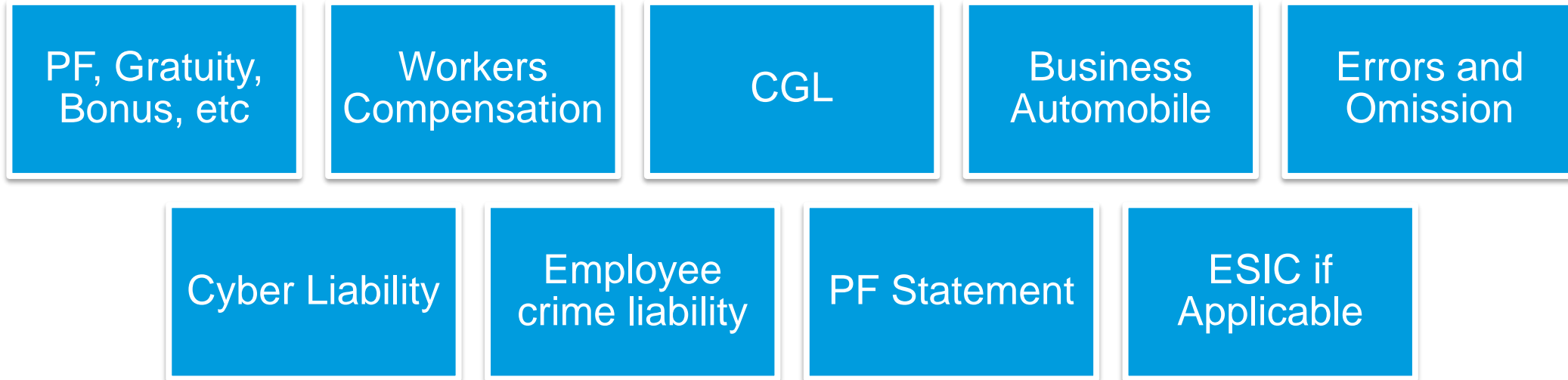
**Time saving & Reduce costs on hiring process**

# No permanent liability and statutory obligations



We are 100% Compliant as per Labor Law, As per the new Policy all contract Engineers should have the below mentioned Policies . All our engineers sourced by us will have the Below.

Proof for verification will be submitted Every month after Onboarding.



## Resource Augmentation

- High Involvement of onshore teams
- Immediate availability of skilled personnel
- Deputation for short terms, long terms & seasoned workers

## Onsite/Offshore/Near shore

- High Involvement of offshore teams
- Quality of Services
- More time to focus on core business activity

## Turnkey Projects

- Short term requirement for project peak periods
- Requirement of specialised man power

## Offshore Development Centre (ODC)

- Major part of the project driven from the ODC
- No drop in current service levels
- Complete business continuity



Enriching Lives

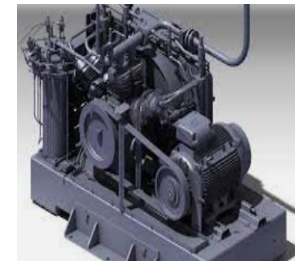
- **Key Projects :**
  - CAD Migration
  - ISO Draw
  - Design Support
  - CAD Animations
  - Reverse Engineering
- **Achievements:**
  - Standardization of CAD Models & Drawings
  - High Quality deliverables
  - Ontime Delivery
  - Only random quality check by customer
  - 15000+ Project Manhours supported.



- **Key Projects :**
  - CAD Migration -Creo, Inventor, UG NX
- **Achievements:**
  - Standardization of CAD Models & Drawings
  - 3500+ Man Hours Delivered



- **Key Projects :**
  - CAD Migration to Creo, From Solid works and Inventor
- **Achievements:**
  - High Quality deliverables
  - Ontime Delivery
  - 1,00,000+ Man Hours Delivered





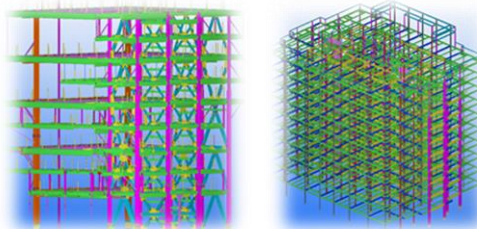
## ARX Mining & Construction Equipment (P) LTD

- 8 Design Engineers Onboarded @ ARX Office
- Engineers support in Concept development, Detailed design for Mining & Construction equipment.
- Developing Manufacturing drawing with Tolerance and GD&T.
- The team is managed by ARX Project Manager.



## DGS Technical Services Inc

- Key Projects :
  - Design Engineers Onboarded @Client Office
  - Designing of 8 Trusses with shorter lead time of 1 Month using Creo Advanced Frame-Work Extension.



- Key Projects :
  - Migration of Complete Concrete equipment's to 3D Parametric Model from 2D Drawing
  - Manufacturing Drawing Preparation with GD & T
  - User Manual Preparation
  - 3700 Man Hours Delivered



- Key Projects :
  - Migration of Electric Tow Truck from Neutral format
  - Concept Designing of Tow Truck
  - Data Clean-up and Migration to Windchill







- Key Projects :

- Design Engineers Onboarded in Sun Mobility Office
- Engineers support in Concept development, Detailed design for their Products.
- 10,000+ Hours Delivered



- Key Projects :

- Design Engineers Deployed Onsite
- Data cleanup, PLM migration and all other engineering activities has been carried out.
- 45,000+ hours Delivered



- Key Projects :

- Manufacturing Drawing Preparation with GD & T
- User Manual Preparation
- 2500+ Man Hours Delivered



- Key Projects :

- Supporting in new product development to reduce lead times.
- Involving in design reviews with customers.
- Implementing the design changes.



## Skill Deployed :

**Creo** : Advanced Modelling, Surfacing, Adv assembly, Detailing, Piping and cabling, Creo Schematics, Tolerance stack-up, Sheet Metal, Layouts.

**UG NX** : Modelling, Detailing, Assembly, Sheetmetal, Surfacing.

**Solid-works** : Modelling, Detailing & Assembly.

**Inventor** : Modelling, Detailing & Assembly.

**Request Turn- Around time** : Max 2 Days

**Bench Candidates availability** : ~30 Members

**Domain** : Casting & Forging Design, Plastic Design, Sheetmetal Designing, BIW Fixtures, Component Design, Mould Design, Concept Design, PMI



Proven capabilities in understanding requirement of multiple customers in manufacturing domain.



Over 150 person years of rich experience in Engineering Services across various Industry verticals



Expert understanding of engineering tools & platforms for various industries



Dedicated Technical Support team for help customers day to day activity



Identified best practices & accelerators from existing projects



All our projects are governed by quality standards & processes – QMS 9001 : 2015 & ISMS 27001:2013



Readiness to make required investments in order to build capabilities whenever needed



# Breadth of Platform Customers

## Machine Tool & Tooling



## Product Design



## Services

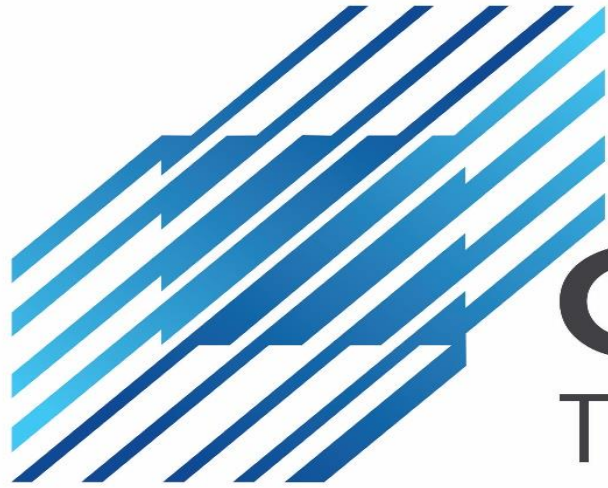


## Medical Devices



## Education





# CADOpt

Technologies

Web: [www.CADOpt.com](http://www.CADOpt.com)

email: [info@cadopt.com](mailto:info@cadopt.com)

**Thank You**