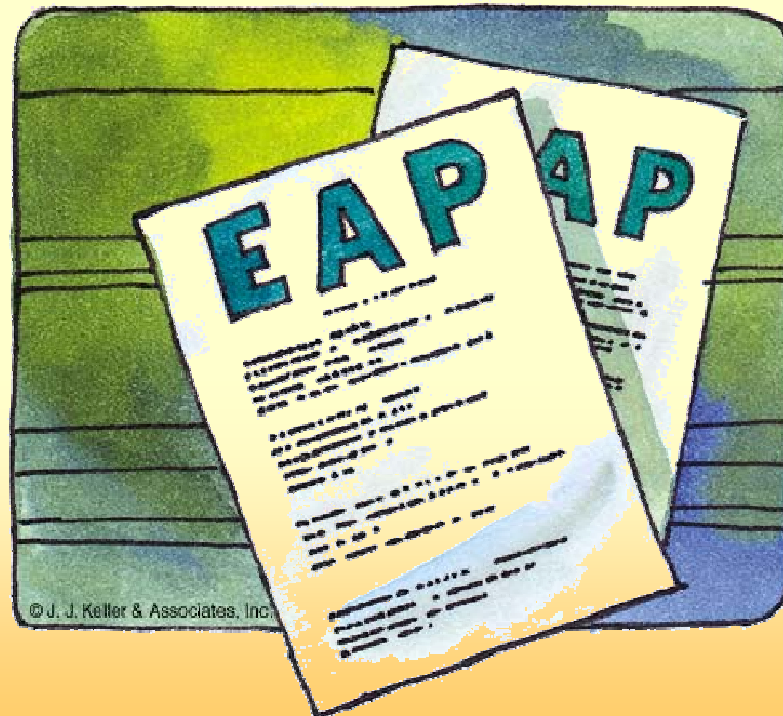
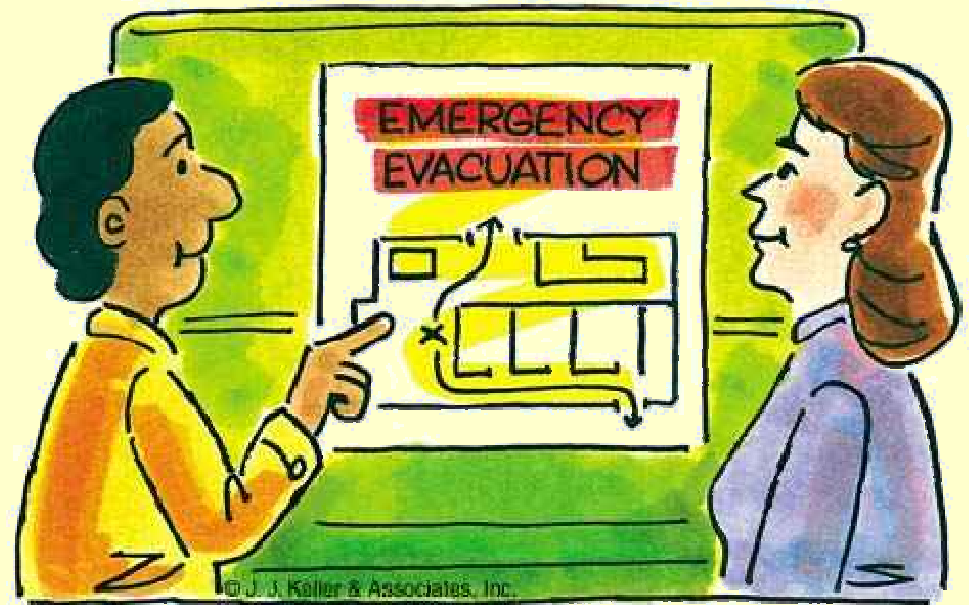


# Prompt engineering works Emergency preparedness and response plan (EPRP)



# Emergency escape procedures and escape routes

- ❖ **Develop emergency escape routes**
- ❖ **Floor plans**
- ❖ **Work-area maps**



# Emergency escape procedures and escape routes

## ❖ Shelter areas

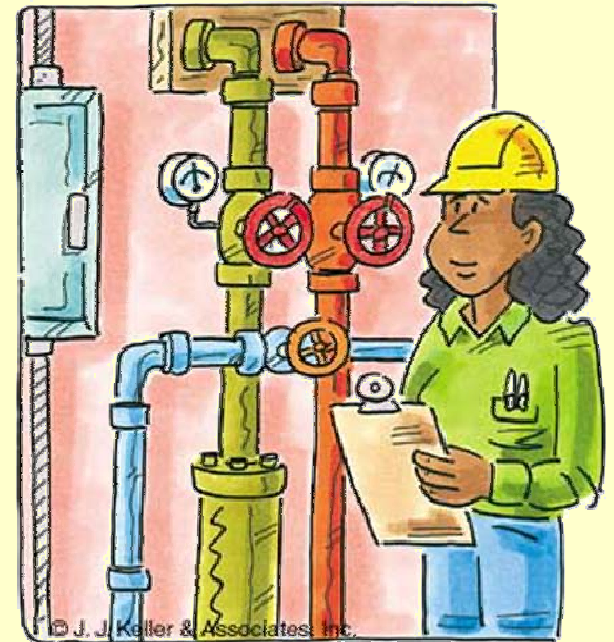
- Locker rooms
- Cafeterias

## ❖ Head count



# Critical plant operations

- ❖ **Designate workers to shutdown critical systems**
  - **Gas**
  - **Electrical**
  - **Plant equipment**
- ❖ **Monitor plant power supplies**



# Critical plant operations

- ❖ **Monitor water supplies**
- ❖ **Monitor essential services**
  - **Chemical processes**
  - **Manufacturing processes**



# Account for all employees

- ❖ **Ensure all employees are safely evacuated**
- ❖ **Roll call**



# Account for all employees

- ❖ **Let supervisor know when away from workstation**
- ❖ **Let supervisor know where you are**



# Rescue and medical duties

- ❖ **Designated personnel will perform rescue duties**
- ❖ **Designated personnel will perform medical and first aid duties**





# Rescue and medical duties

- ❖ **Know the potential emergency situations that could occur**
- ❖ **Emergency responders must be trained**



© J. J. Keller & Associates, Inc.



# Evacuation

---

- ❖ **An adequate number of trained employees (wardens) help evacuate others**
- ❖ **There should be at least 1 warden for every 20 employees**



# Evacuation

---

- ❖ **The wardens know the workplace layout and escape routes**
- ❖ **Wardens know the location of handicapped employees**



# Evacuation

---

- ❖ **Wardens check rooms and enclosed spaces where employees could be trapped**
- ❖ **Wardens account for all employees**



# Alarm systems

---

- ❖ **When there is an alarm, evacuate or perform your assigned emergency actions**
- ❖ **Know the different types of alarm signals**



# Alarm systems

---

- ❖ **Flashing lights may be installed in areas where alarms may not be heard**
- ❖ **Alarm systems may use an auxiliary power source so they can operate when power fails**