

Creating a sustainable supply chain ecosystem -- Cross Border Supply Chain Solutions





Founded in 2004
Creating a sustainable supply chain ecosystem



Globalized since 2008,
Subsidiaries in 16 Countries



Focus on Cross-Border Supply Chain services
Long-term partnership with global well-known enterprises, over 3000+



24-7 local service delivery
Big data research & Digital solutions on Supply Chain



Global warehouse area, 40,000 sqm+
B2B warehouse, Class 9 dangerous goods storage



Employees Headcount, 800+
Expert & Engineering technician, 300+

● Vision

Creating a sustainable supply chain ecosystem

● Mission

To deliver end-to-end supply chain solutions that drive quality, value, innovation, and sustainability, empowering businesses to optimize operations, enhance efficiency, and exceed customer expectations in an increasingly interconnected, competitive, and dynamic global market.

● Values

Integrity & Sustainability

Collaboration & Innovation

Customer Focus & Growing Together

Embracing Change & Fast Learning





Daniel You

Founder, President



Stone Ren

Vice President



Milo Xie
-Deputy General Manager



Jiri Kvaltin
-VP of EMEA



Kenneth O'Sullivan
-Head of UK



Ryan McAfee
-Head of USA



Ismael Gonzalez
-Head of Mexico



Ankuj Sharma
-Head of IN-MY



Tran Xuan Chien
-Head of Vietnam



Tomas Effmert
-Operation head of EMEA



Artur Grzybowski
-Technical head of EMEA



Chiremba M.
-Head of South Africa

Mr. Ankuj Sharma
CEO - INMY BU Head

Ms. Jasmine Shaikh
Head – Human Resources

Ms. Neeti Chhangiani
Head - Finance

Mr. S. R. Rao
Head – Customer Care & Support

Mr. Marcus
Area Sales Manager
Malaysia Region

Mrs. Sangeeta Chauhan
Regional Manager
North & Central Region

Mr. Ankit Batra
Regional Manager
West Region

Mr. S. Vaidyanathan
Regional Manager
South Region

Mr. Geeta Prasad Meena
Sales Manager

Mr. Amrender Thakur
Asst. Manager

Mr. Sunil Nikumbha
Sr. Manager – Sales

Mr. Sandip Mane
Asst. Manager –
Operations

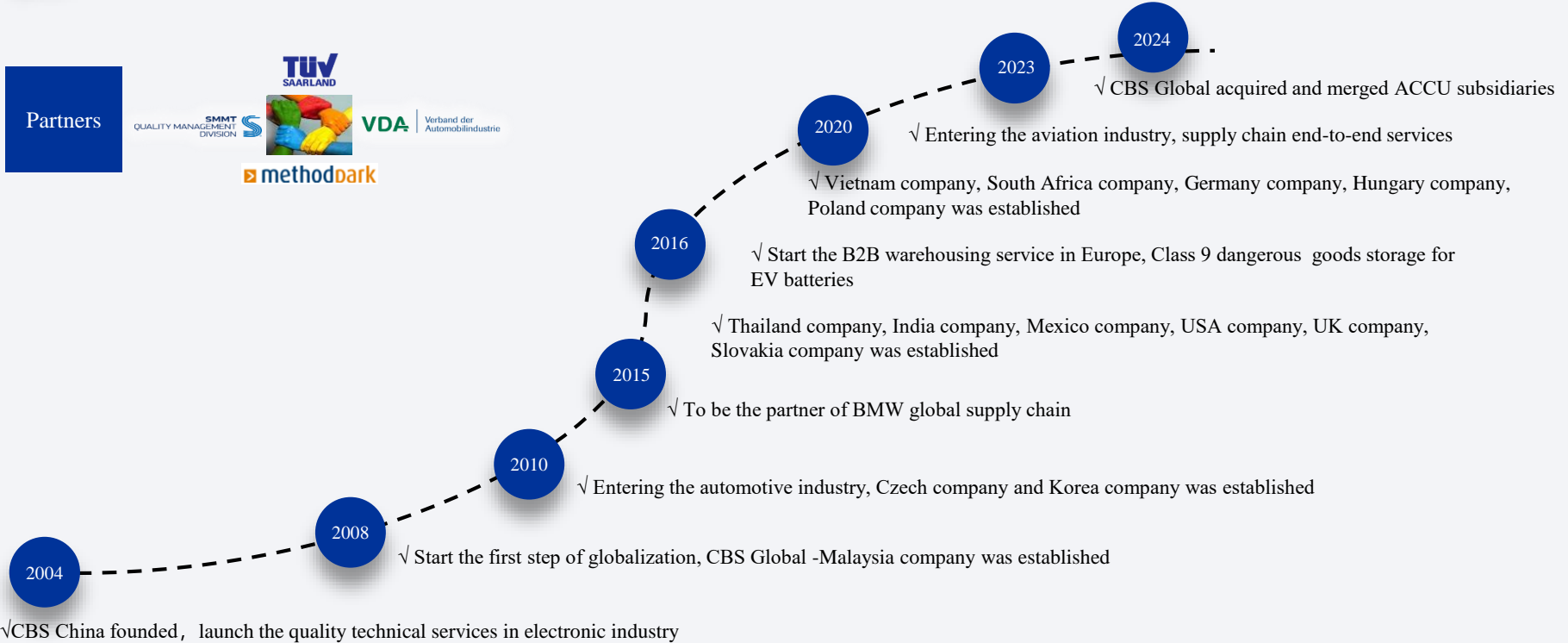
Mr. Abdul Khadar
Sales Manager

Mr. Srinath
Operations
Coordinator

Mr. Rohit Yadav
Asst. Manager – Sales- GWL

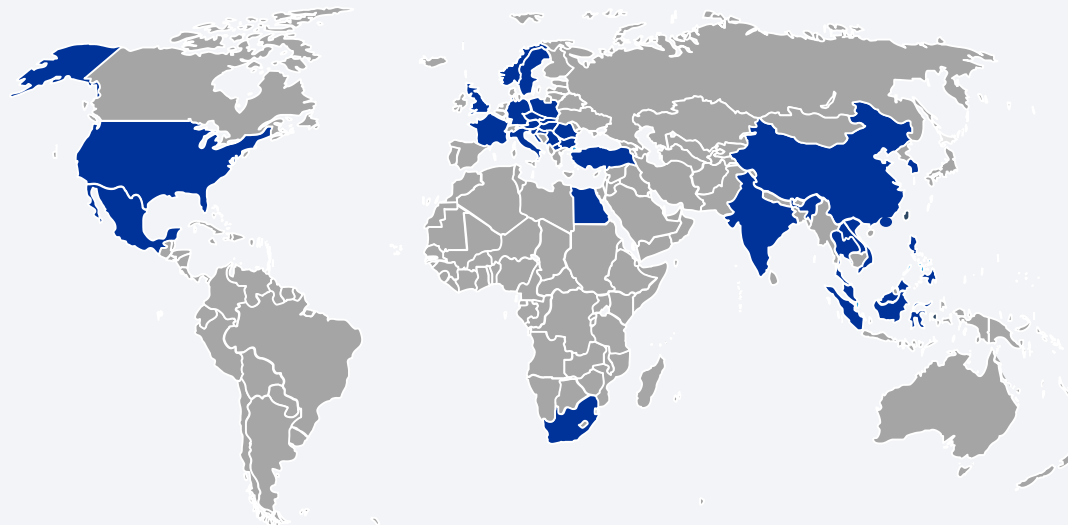
Mr. Upendra Joshi
Site Coordinator- Operations

Partners



■ Global Coverage | Local Services

- Corporate entity
- Team Coverage
- ▲ Warehouse location



Asia

- | | | |
|-----------|-------------|---------------|
| ● China ▲ | ● Vietnam ▲ | ● Thailand |
| ● Korea ▲ | ● Singapore | ● Philippines |
| ● India ▲ | ● Malaysia | ● Indonesia |

Europe

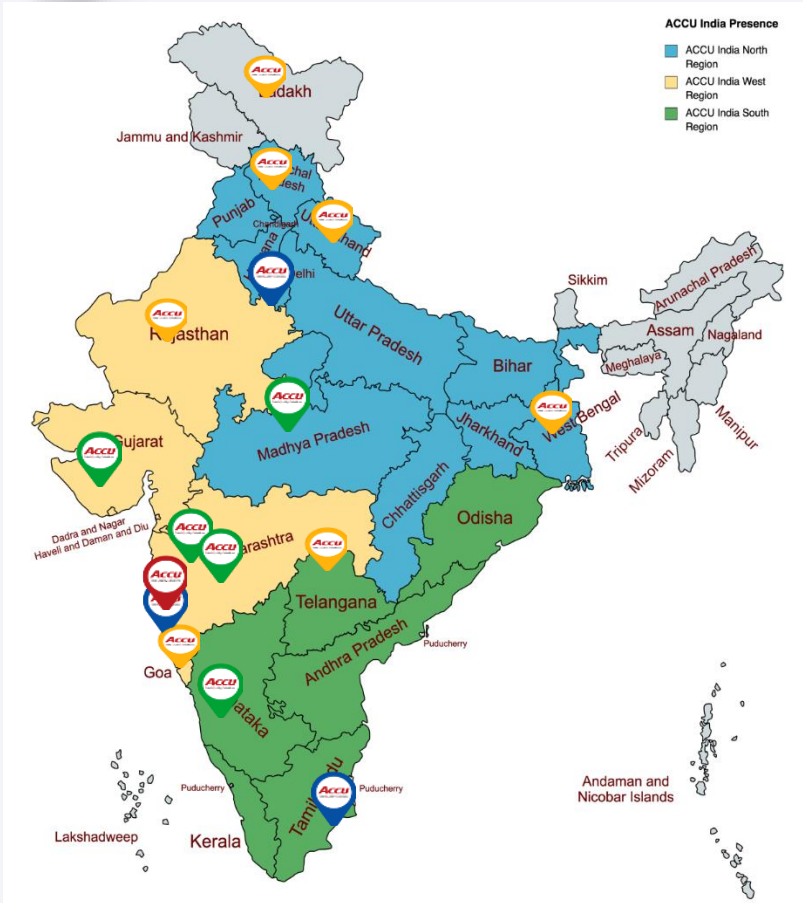
- | | | |
|-------------|--------------|--------------|
| ● Czech ▲ | ● UK | ● Netherland |
| ● Poland ▲ | ● Hungary | ● Belgium |
| ● Germany ▲ | ● Slovakia ▲ | ● Turkey |

America

- USA ▲
- Mexico ▲

Africa

- South Africa
- Egypt



India Head Office
Pune

Branches
NCR , Chennai & Pune

Project Offices
Pondicherry, Ahmedabad, Mumbai, Sanand, Aurangabad, Nasik, Bengaluru, Hosur, Tirupati, Indore

Remote Coverage
Goa, Kolkata, Hyderabad, Nagpur, Punjab, Himachal, J&K

Global Location Management & Leadership
Malaysia, Indonesia, Philippines, Singapore, Dubai , Bangladesh

Northern Region

Mr. Geetaprasad Meena
Area Sales Manager
Mobile :- +91- 8956993289
Email- geeta.prasad@cbsc-global.com

Western Region

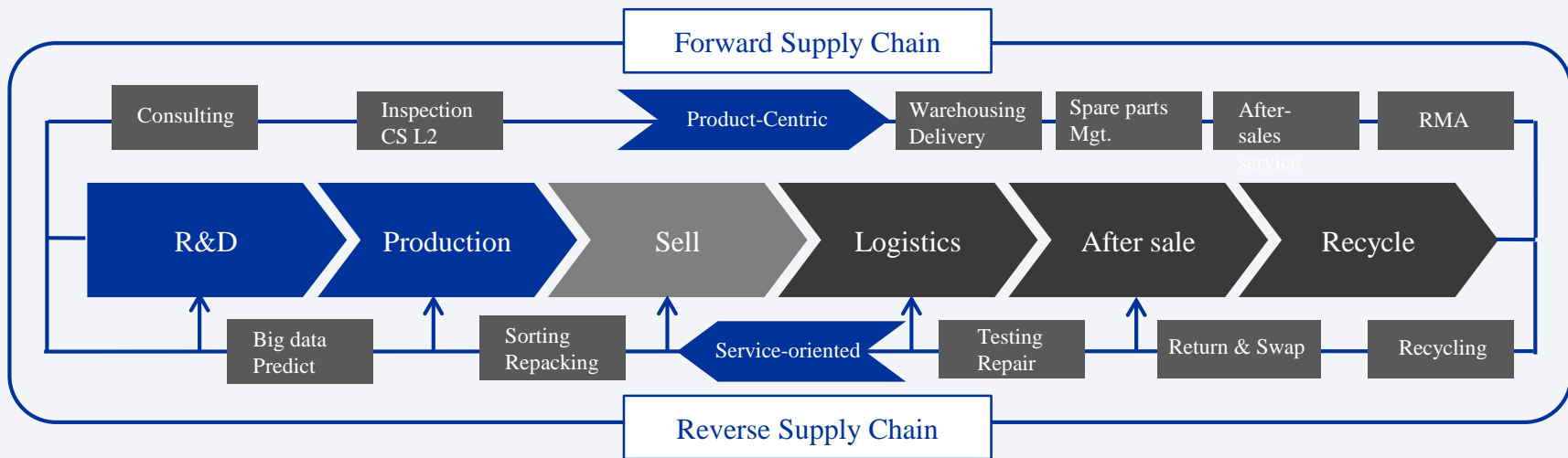
Mr. Sunil Nikumbha
Sr. Manager – Sales
Mobile :- +91- 7420081050
email:- sunil@cbsc-global.com

Southern Region

Mr. Abdul Kadhar
Area Sales Manager
Mobile :- +91- 7410094773
email:- abdul@cbsc-global.com

Corporate

Mr. S. R. Rao
Head – Customer Support
Mobile :- +91- 7420081051
email:- rao@cbsc-global.com



● Supply Chain Quality Service

Quality consulting and training

Quality improvement

Quality Inspection and Testing

Pre-Shipment Inspection and plant audit

Quality Gate and CS L2

Resident Engineering service

Quality sorting/rework/FAE

Failure analysis

● Supply Chain Warehousing & After-sales Service

Logistics scheme design

Customized warehousing service

After-sales service and repair

Spare Parts and NOK parts Mgt.

Regional distribution center

Value-added Assembly service

Local transportation and delivery

Recycling and scrap service

● Supply Chain relocation service

Consulting of overseas investment
and factory set up

Resources sourcing service and HR service

Market survey/business visit

Professional service (HR, Accounting, Tax, Legal
affairs)

Components Served by ACCU

Selected examples

Power and Transmission

- Engine
- Piston
- Fuel injection
- Exhaust muffler system
- Clutch
- Engine components
- Fuel system
- Shaft
- Drive control
- Shock absorber
- Strut
- Tire
- Spring
- Stamping metal
- Door
- Sheet-molded plastics
- Composite materials
- Paint
- Internal system/module
- Instrument panel
- Dashboard
- Dashboard electronic components
- Plastic parts
- Wire harness
- Battery
- Switch
- Sensors
- Lamp

- Controller
- Electronic components
- Drive shaft, convertible joints
- Transmission system
- Engine parts
- Transmission system

Chassis

- Break/Airbag system
- Electronic components
- Rigid packet shaft
- Steering system
- Suspension system
- Differential brake
- Glass window
- Windshield wiper
- Bumper
- Car security system

Body Parts

- Passenger protection system
- Heating & air conditioning
- HVAC
- Seat
- Door panel

Interiors

Electronic and Electrical

- Control circuit
- Alternator
- Speed control device
- Navigation system
- In-car entertainment system

Global one-stop Supply Chain Service Center, To provide "Quality/Engineering/After-sales/Logistics" comprehensive services



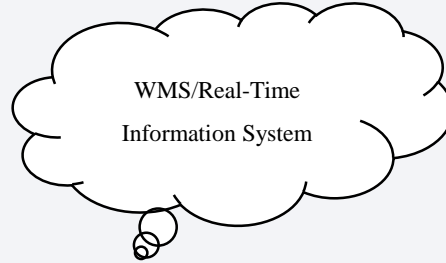
Customer

Transportation
Global Warehouse
Interconnected

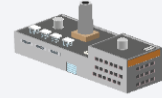


Customized 3PL service
Regional Distribution Centre
B2B VMI Quality Technical Centre
After-sales Maintenance and Repair Centre

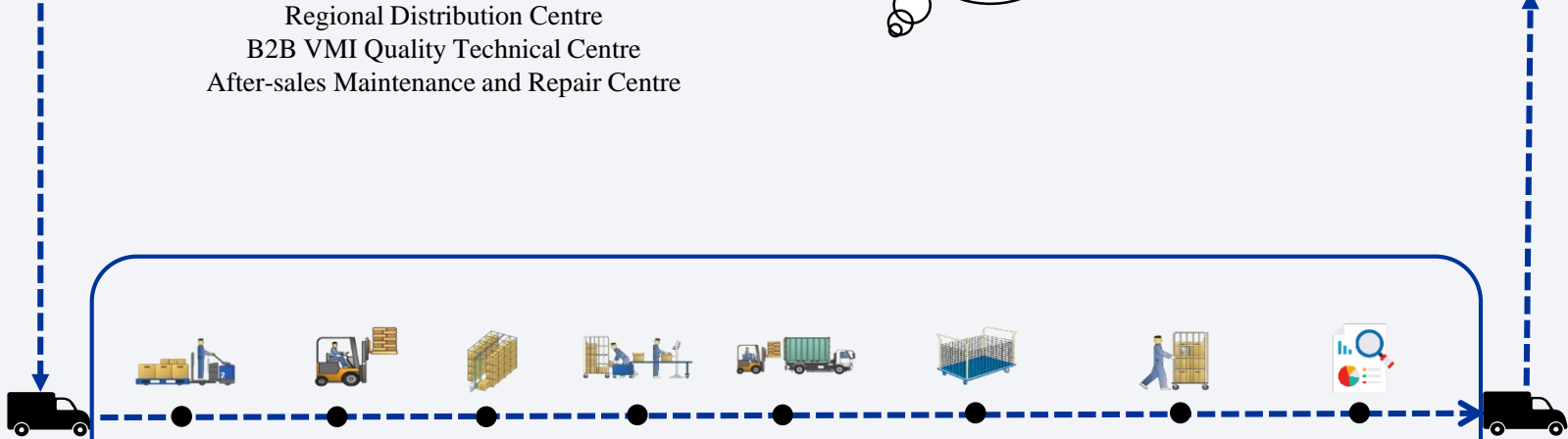
ASN&EDI



ASN&EDI

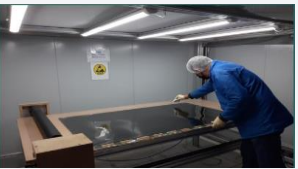


End Customer



- Custom Clearance
- Quality Inspection
- Storage
- Function Test
- Outbound
- Handling of returned product
- Rework
- Local communication
- Pick up to WH
- Inbound
- Inventory
- Labelling
- Loading
- NOK parts Mgt./Scrap
- Repair
- Complaint handling
- Unloading
- Put on rack
- Spare parts Mgt.
- Repacking
- Local delivery
- Empty container Mgt.
- Failure Analysis
- SQE/OSS
- Palletizing
- Sequencing
- Assembly

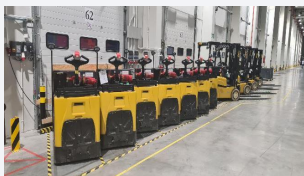
Tijuana [Mexico] / 2500sqrm
IMMEX WH, Repair Center



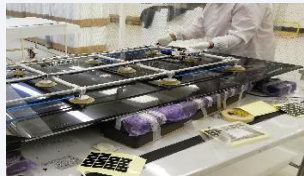
Livonia[USA] / 35,000sqrf
Class 9 WH, After-sales Service



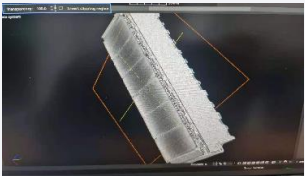
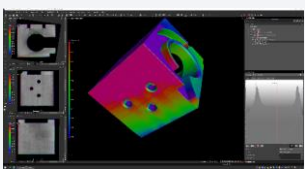
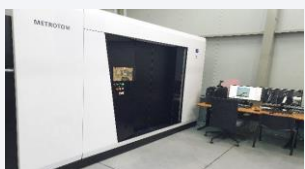
Wroclaw [Poland] / 11,000sqrm
Class 9 WH, Testing & FA analysis



Haiphong [Vietnam] / 3000sqrm
VMI/Cleaning room, QA



Nosovice [Czech] / 5,000sqrm
Class 9 WH, VMI, Testing



Activities	Final Inspection	Final Inspection/ In-Process	Final Inspection	Segregation/ Rework/ Functional Test	Final Inspection	Final Inspection
	CSL1/ CSL2	CSL1/ Process Inspection	CSL2		CSL1	CSL1
Customer	Belrise Industries Limited	Bosch Chassis Systems India Pvt. Ltd.	Jbm Automotive Pvt Ltd	LGD/Jinfu/ BOE/ Coreoptex	Imperial Auto Industries Ltd.	Victoria Auto Pvt Ltd
Location	Rajangaon	Nanekarwadi, Chakan, Pune	Chakan, Pune/ Pithampur M. P.	Rajangaon, Pune	Chakan, Pune/ Faridabad/ Pithampur	Faridabad (Haryana)
India Region	West	West	West/ North	West	West/ North	North
Working Since	6 Years	(3 years contract)	6 Years	8 Years	3 Years	1 Year
ACCU Team Size	50	3 Engineers/ 59 QI	25	40	80	150
End Customer	: Jaguar & Land Rover UK and Volvo Cars UK	TML/Mahindra/ MG Motors/ Maruti Suzuki/ VW/ Suzuki Motors	Volvo Eicher, India and UD Trucks, Thailand	LG Electronics India Pvt. Ltd	Tata Motors/Mahindra/ MG Motors/ Maruti Suzuki/ VW/ Hyundai	Maruti Suzuki/ Honda/ Toyota
Reference Photo						

Customer Name : Jay Bharat Maruti (JBM)

Customer Address : Pithampur, M.P., India

End Customer : Volvo Eicher, India and UD Trucks, Thailand

Material Commodity : Sheet Metal Skin Panel & Inner Panels of Commercial Vehicles

Activities : Pre Dispatch (CSL 2) Visual & Functional Inspection and Packaging (Export & Domestic) of Sheet Metal Parts

Services :

- Visual inspection of aesthetic defects like Dent, Damages, Shock line, Wrinkle, Thinning, Crack etc. using inspection oil & Highlight wall with LUX level of 1200-1500.
- Functional inspection of Inner Panels, Reinforcements & brackets using Vernier Caliper, Micrometer, Inspection Fixtures with GO/NoGO Gauges for the defects with reference to master samples & component drawings.



Customer Name : Automotive Stampings and Assemblies Ltd. (A TATA Group Company)

Customer Address : Chakan, Maharashtra, India

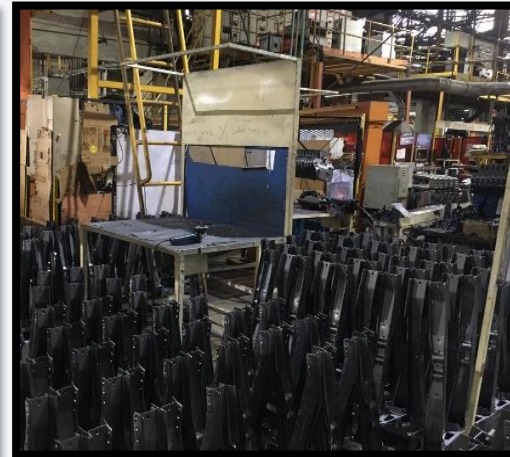
End Customer : TATA Motors Pune, FIAT India, Tata Hitachi & Piaggio Vehicles, Baramati

Material Commodity : Sheet Metal Inner Panels, Fire Wall, Fuel Tank & Reinforcement of Passenger Vehicles

Activities : In Process & Pre-dispatch Visual & Functional Inspection of Sheet Metal Components (Press Parts & Assemblies) and Powder Coated assemblies

Services :

- Visual & Functional inspection of Inner Panels, Reinforcements & brackets using Vernier Caliper, Micrometer, Inspection Fixtures with GO/NoGO Gauges for the defects with reference to master samples & component drawings.
- Inspection as per SOPs with respect to No. of Spots, Length of CO2 Welding, Quality of Powder Coating.
- Covering Harrier, Nexon, Cowl Panel, Fire Wall, Suspension Tube, FCA and Fuel Tank production lines.



Customer Name : Badve Engineering Ltd.

Customer Address : Rajangaon, Maharashtra, India

End Customer : Jaguar & Land Rover UK and Volvo Cars UK

Material Commodity : Sheet Metal Inner Panels, Reinforcement & Brackets of Passenger Vehicles

Activities : Pre Dispatch (CSL 1 & CSL 2) Visual & Functional Inspection of Powder Coated Sheet Metal Components (Press Parts & Assemblies)

Services :

- Visual & Functional inspection of Inner Panels, Reinforcements & brackets using Vernier Caliper, Micrometer, Inspection Fixtures with GO/NOGO Gauges for the defects with reference to master samples & component drawings.
- Inspection as per SOPs with respect to No. of Spots, Length of CO2 Welding, Strength of Welding using Ping Test and Quality of Powder Coating.



Customer Name : Lumax Cornaglia Auto Technologies Pvt. Ltd.

Customer Address : Chakan, Pune, India

End Customer : MG Motors and Toyota Motors

Material Commodity : Head Lights and Fuel tanks for Passenger Vehicles

Activities : Pre Dispatch (CSL 2) Visual & Functional Inspection of Automotive Head Lights, Tail Lights & Fuel Tank

Services :

- Visual & Functional inspection of Automotive Head Lights, Tail Lights & Fuel Tank for defects like Crack, Material Chip off, Coating, Scratches etc. with reference to master samples and SOPs.



Customer Name : Knorr- Bremse Technology Centre India Pvt. Ltd.

Customer Address : Hinjewadi, Pune, India

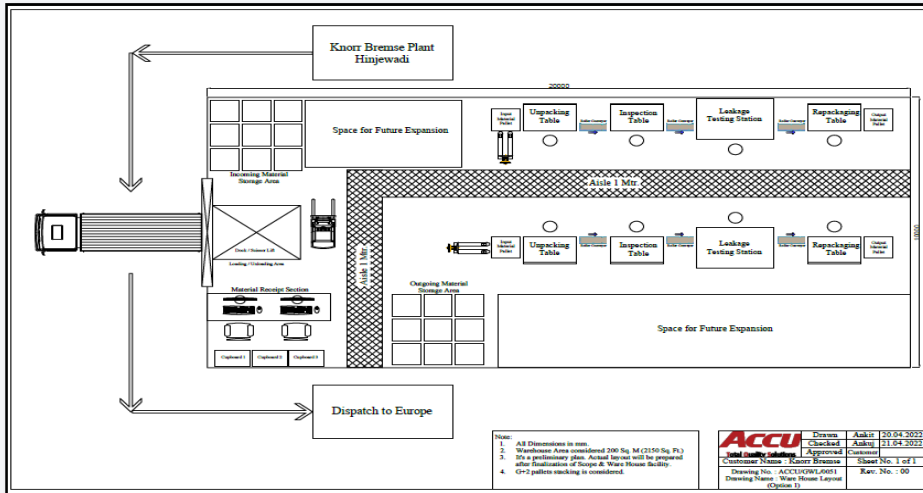
End Customer : Tata Motors, Volkswagen, Fiat, Overseas Customers etc.

Material Commodity : Breaking System for Heavy Commercial Vehicles

Activities : Ware Housing, Logistics, Pre Dispatch (CSL 2) Visual Inspection & Functional Testing on Leak Test Equipment

Services :

- Visual & Functional inspection of Breaking System Valves & Pumps with reference to master samples, SOPs & Functional Testing Parameters.
- Facility Planning & Operations for Warehousing & Logistics of inspected material for overseas dispatch.



Customer Name : SAMSUNG - BOE

Customer Address : G. Noida, India

End Customer : SAMSUNG India, G. Noida

Material Commodity : Mobile Display Card (Electronic)

Activities : Incoming Material Inspection

Services : Sorting & Visual Inspection of PCBA by using Microscope and Functional check as per Samsung Requirement. It was before manufacturing service at the Sub Assembly lines of Samsung.



Customer Name : LG Display

Customer Address : LG Display Singapore Pte. Ltd.

End Customer : LGEIL Pune, Maharashtra, India

Material Commodity : OLED TV Panel

Activities : Incoming Inspection and Rework of Defective OLED TFT Set

Services:-

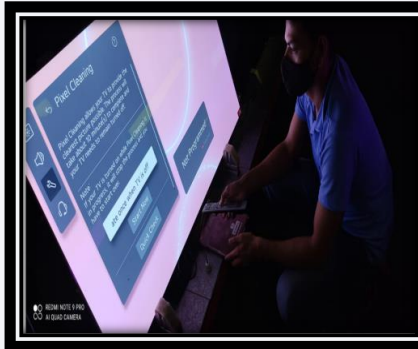
- Visual inspection of panels for defects like Damages, Scratches, Bend, Shifted etc.
- Functional inspection of OLED TV Defect Like Vertical Line Mura, Horizontal Line Mura, Black Spot, White Spot, Horizontal Block ,Vertical Block, Other Defect etc.
- After Inspection Mura Defective OLED TV Panel reworked by Using OFF-RS Test And Pixel Cleaning



Unpack OLED TV Set.



Put In Stand



Pixel Cleaning & OFF Rs Test



Packing Of Set



Customer Name : Jabil Circuits India Pvt Ltd.,

Customer Address : B-26, Ranjangaon MIDC & Industrial Area, Turbhe, Ranjangaon, Maharashtra-412220

End Customer : Salcomp Manufacturing India Pvt Ltd., Kanchipuram, Tamilnadu

Material Commodity : Mobile charger Adapter parts like, Plastic Housings, charger pins & Transformers.

Activities : Cosmetic Inspection to be carried out before assembly

Services : Visual inspection of cosmetic defects like Dent, Scratch, Damages, Shine marks & Moulding defects etc. with LUX 1200 – 1500.

Customer Name : Mieko, HKC

Customer Address : G. Noida, India

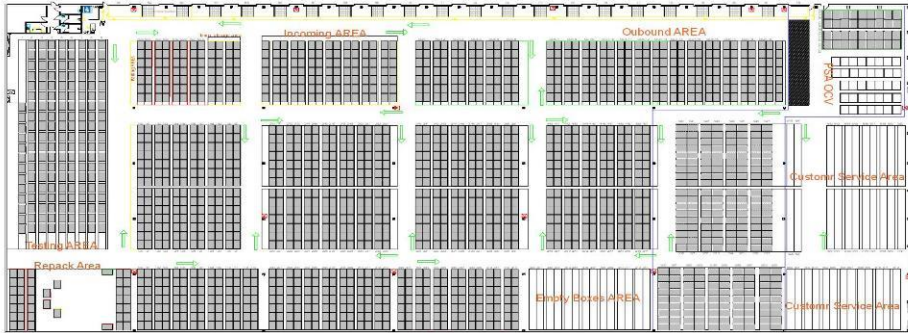
End Customer : Oppo India

Material Commodity : Mobile Phone PCBA and TV PCBA

Activities : Verification of Defective Parts

Services : Verification of defective part at their client end. Our Engineer visit their client like Oppo, One Plus, Skyworth Etc. for the verification of rejected parts.

CBS QTC POLAND - has adopted by training all it's staff to use GQMS and QMS software therefore fully integrating with customer facility systems. Thus allowing a direct communication channel for data flow. Safety of the solution is ensured by a 2 stage VPN protected communication with customers servers.



Facility has designated TEST, STORAGE, INBOUND-OUTBOUND, QUARANTINE, REPACK locations. All with colour coded marking and visual aids. With unique under the roof **side load** area.

Currently CBS Poland Warehouse 1:

Processes up to **20 forwarder transports** per day, including direct multimodal transports.

That is making a total of **40 truck loads** being handled on long haul destinations. There are up to **20 shuttle** service transports handling final products, material and packaging.

Current headcount in location exceeds **35 people**:

Where **12** are certified for **electrical works** and tests for **Insulation**
10 have **Dangerous Goods Storage** qualifications

Additional site is supported by **4 local engineers** to support new Work Instructions and test design.

Daily test capacity exceeds:

1000 battery packs
1000 battery modules

Facility uses:

12 pallet trolleys
8 2.5T forklifts
2 3.5T forklifts
2 Hi-lifts for rack system



Long-term cooperation with more than 3,000 customers worldwide

Selected Few





Automotive Stampings and Assemblies Limited



Mahindra



Selected Few



A black and white photograph of a person standing on a wooden pier, looking out at the ocean. The person is wearing a dark jacket and pants. The background shows a vast ocean and distant mountains under a cloudy sky. A blue banner is overlaid on the right side of the image, containing the text "THANKS FOR YOUR WATCHING".

THANKS
FOR YOUR WATCHING