



SHREE SAI ENTERPRISES



MR. NAVIN PATIL
(M.D.)
Mob : 9158464637

shreesainew.enterprises@gmail.com



About Us :

We are in the business of manufacturing Brewery, Pharmaceutical, Chemical and allied equipments. We have a good workshop for manufacturing the all type of equipments and all special fabrication works. We mainly enjoy manufacturing pressure vessels, Heat Exchangers, all types of S.S. & M.S. / C.S. storage/process tanks, Farmenters, BBT, Lutertens, and all fabrication equipments. We have successfully executed project like Breweries pipelines, Steam Piping, Hot Oil Piping, Jacketed Piping etc. of Radiographic quality. Weareamo streliaible Fabrication, Erectionand Equipments Manufacturing company with very good track record. We are group of Young, Dynamic and Highly skilled work force with required Technical qualification and job experience at shop floor as well as project sites. We have already worked on project sites of thermal power plants, Petrochemical plants, Pharmaceutical Plants, Breweries Plant and Distilleries all over India and abroad. We have a team of Engineers and a big skilled work force with the best of Machinery. We want to be always proud of any machine, we fabricate, erect but more than that we want to be proud of our clients.

Introduction :

- 1) FABRICATION & ERECTION OF ALL TYPE OF PIPINGS.
- 2) MANUFACTURING OF BREWERY, CHEMICAL, PHARMACEUTICAL &PETRO CHEMICALS EQUIPMENTS, MACHINERIES.
- 3) FABRICATION & ERECTION OF SITE FAB./SHOP FAB.
STORAGE S.S./M.S./C.S.TANKS, HEAT EXCHANGERS, ETC.
- 4) All Type of Epoxy
- 5) STRUCTURAL WORK OF PROJECT.



Man Power :

Sr. No.	Category	Nos.	Sr. No.	Category	Nos.
01	Engineers (B.E.) (Project manager)	01	06	Arc Welders	05
02	Engineers (D.M.E.)	01	07	Riggers	05
03	Pipe Fitters	10	08	Electricians	01
04	Structural Fitters	05	09	Store Kippers	01
05	Fabricators	05			

Thease are our permanent workers for any other site we can Arrange the required Manpower.



Facilities :

Technology is the name of the game and we use the best of the machinery to produce precisely monitored equipments. We have all essential machineries and equipments, which are listed below, to produce the best of works. We are well equipped with the latest and advanced technologies, machines and instruments to undertake any critical jobs, projects.

SOME OF THE MACHINERIES AND EQUIPMENTS ARE LISTED BELOW.

Sr: No.	Category	Nos.	Sr: No.	Category	Nos.
01	D.C. Welding Rectifier, 400 Amps	03	14	Wire rope,0.5",0.75",1.00",2Mtr. Long	03 Each
02	A.C. Welding Transformer, 400 Amps	02	15	Hydraulic Pipe Bending Machine.	01
03	Welding Generator, 400 Amps.	01	16	Tool Box Having all tools	10
04	Portable A.G. Grinder.	05	17	Pipe Cutting Machine	02
05	Portable A.G 4 Grinder.	08	18	Welding Electrodes, Baking & Carrying Overn.	02
06	Tig Welding Sets.	05	19	Pedestal Drill Machine 25 MM	01
07	Welding Cables, 600 Amps.	1000 Mtr.	20	Hammer drill Machine	03
08	Gas Cutting Sets.	02	21	Jims Screw	01
09	Chain Pulley Blocks, 2 T	02	22	Pipe Vice, Bench Vice, (Each)	01
10	Chain Pulley Blocks, 3T, 5T	01	23	Pulley Block 4 way	01
11	Pull left, 5 T	01	24	Pulley Block 3 way	01
12	Manual Operated Wrench Machine 7T	05 Each	25	Pulley Block 2 way	01
13	D. Shakale 1 T to 10 T.	03 Each	26		01

Installation Activities :

Installation is the most precise and important work in the project. We are having well-experienced and qualified team which handle the work very easily.

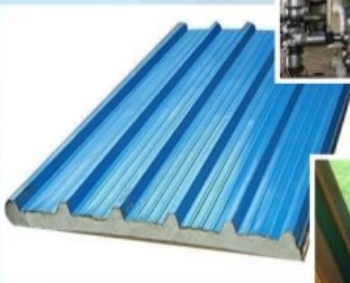
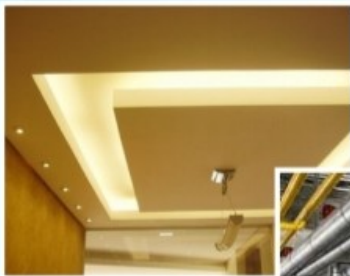
Some types of installation work as under.

- 01) Equipment installation
- 02) Machine installation
- 03) Piping fabrication and installation
- 04) Installation of under ground piping systems
- 05) Installation of critical equipments
- 06) Installation of piping systems for Petrochemicals, Chemicals, Pharmaceuticals and Brewery plants.
- 07) Installation of the firefighting system piping.
- 08) Petroleum installation and refineries.



Introduction : _____

- 1) Fabrication & Erection of All Type of Pipings
- 2) Fabrication & Erection of All Type Structural Work
- 3) Unloading & Erection.
- 4) Manufacturing of PUF Pannel, PUF Door.
- 5) App Type Gipson Work.
- 6) All Type of Epoxy, & Painting Work.
- 7) Fabrication of Brewery, Chemical, Pharmaceutical & Pelro Chemicals Equipments, Machineries.
- 8) Fabrication & Erection of Site Fab./Shop Work.
Storage S.S./M.S./C.S.Tanks, Heat Exchanges Etc.



BANK DETAILS

SHREE SAI ENTERPRISES

Bank Name : ICICI Bank

Branch : Kushal Nagar, Aurangabad

A/C No. : 697005500197

IFSC No. : ICIC0006970

GST No. : 27DDRPP0882G1Z0



SHREE SAI ENTERPRISES

Address : Flat No. 5, Gopiratna Building, Beed By pass, Aurangabad.
shreesainew.enterprises@gmail.com