

# *Company Overview*

Patson Electricals And Controls



**Patson Electricals And Controls**  
Burner Control & Combustion System Specialist



# *Company Profile*

Patson Electricals & Controls is a specialized company supplying high quality Burner Controls and Combustion Control Products, Systems and related Automation.

- **Authorized Channel Partner of Honeywell Automation India Ltd for Industrial and Combustion Thermal.**
- Extensive experience in the design and supply of combustion control products in Metal Processing, Automotive, Food Processing, Glass, Textile, Cement & Ceramic industry.
- Complete solution offering for Industrial Process Heating applications such as furnace, Boilers, Incinerators, Kilns, Smelters, Dryers etc.
- Engineering services and installation support
- Stock and sale of Regular standard products.
- Value added Services like AMC for Burner Services



**Patson Electricals And Controls**  
Burner Control & Combustion System Specialist

# ***Product Range***

Patson offering includes broad range of Combustion Solutions, Flame Safeguard Controls, Burner Controls, Related System Components and Accessories.

## **Burner Controls**

- Flame Monitoring
- Flame Failure & Safety
- Ignition Controls
- Safety Interlocks & Shutdown

## **Combustion Controls**

- Temperature Control
- Pressure Control
- Firing Rate Modulation
- Fuel / Air Ratio Control

## **Flare Stack Monitoring**

- Flame Monitoring

## **Boiler Controls**

- Flame Monitoring
- Firing Rate / Load Control

# ***Actuators***



**Honeywell Modutrol IV  
Rotary Actuator Motors  
for Firing Rate Valves,  
Dampers & Auxiliary  
Equipment's**



**Honeywell Special  
Actuators Powered by  
Fluid Pump for On-Off,  
Hi-Low or Modulation**



**Honeywell On-Off  
Gas Valve Fluid  
Power Actuator**



**Honeywell Air  
Damper Actuator for  
Multistage or  
Modulating Oil &  
Gas Burner**

# Flame Detectors



Model	C7008, C7009	Q340A	C7012 Purple Peeper®	C7027 Minipeeper®	C7035 Minipeeper®	C7061 Purple Peeper®	C7076
Detector Type	Flame Rod	Thermocouple	Rectification Ultraviolet	Ultraviolet	Ultraviolet	Ultraviolet	Ultraviolet
Burner Type	Gas-Fired	Gas-Fired	Coal, Gas, or Oil-Fired	Coal, Gas, or Oil-Fired	Coal, Gas, or Oil-Fired	Gas or Oil-Fired	Gas or Oil-Fired
Pilot Type	Intermittent or Standing	Intermittent or Standing	Intermittent or Interrupted	Intermittent or Interrupted	Intermittent or Interrupted	Intermittent or Interrupted	Intermittent or Interrupted
Unique Feature	100% Fail-Safe Operation	Low Cost Units for Process Applications	Dynamic Self-Check, Shutter	1/2" Sight Pipe Mount	1" Sight Pipe Mount	Dynamic Self-Check	Dynamic Self-Check, Adjustable Sensitivity

**Patson Electricals And Controls**  
 Burner Control & Combustion System Specialist

# Pressure & Temperature Controls



**Honeywell Safety Pressure Switches for positive or differential pressure systems for gas & air**



**Honeywell Pressuretrol® Controllers with automatic limit protection for pressure systems. Use with steam, air, non-combustible gases**



**Honeywell Pressure Regulators with or Without Filters**



**Honeywell On/Off , Limit & PID Controllers with Temperature Sensors like Thermocouples, RTD's**

**Patson Electricals And Controls**  
Burner Control & Combustion System Specialist

# Valves



**Honeywell Industrial Gas Safety Shutoff Valve with V4055 fluid power actuators to control natural or LP gas flow to commercial and industrial burners**



**Honeywell Solenoid Gas Valves for Control & Regulation of Gases**



**Honeywell Manual Reset Gas Valves for Gas Leak Detection**



**Honeywell Butterfly Firing Rate Gas Valve Provides modulating control of natural, manufactured, LP gases or air.**



**Combination Gas Valves, with or without integral pressure regulators**

# ***Burner Controllers***



**Honeywell 7800 Series Burner Sequence Controllers, complete with Accessories like Keyboard Display Module, Purge Timer Cards, Amplifiers etc.**



**Honeywell TBC Series Burner Controller Designed for Pulse firing and Modulating Applications**



**Honeywell DBC Series Burner Controller to Monitor & Control Gas & Oil Burners**



**Honeywell Flame Switches for Flame Detection Function.**



**Honeywell Satronic Burner Controllers**



# ***System Integration***

**Patson solutions are centered around Honeywell Flame Safeguard & Burner Control Products, Maxon Combustion Control Products & Iris Flame Monitoring Products.**

**Combustion Control Panels**

**Burner Management System  
Panels**

**Design & Engineering  
Services**

**Site Installation Support**

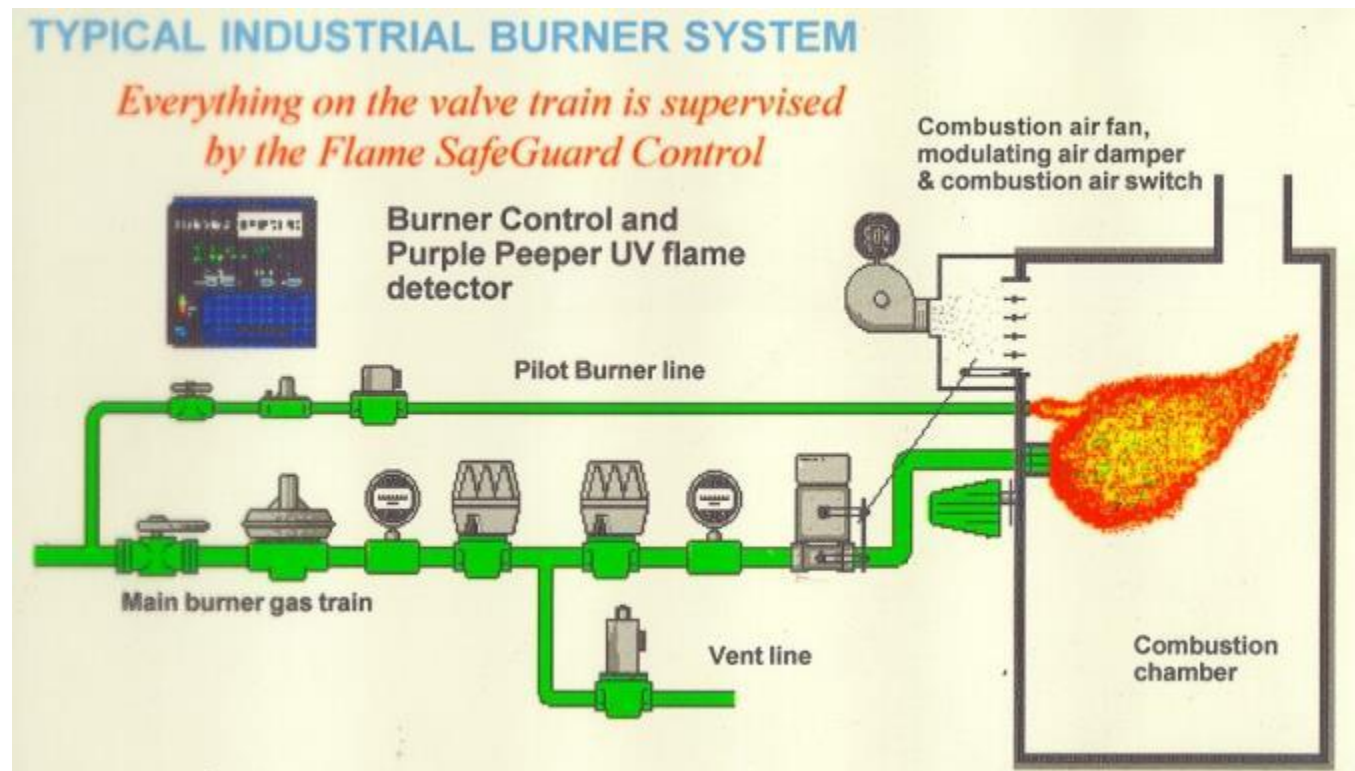


**Patson Electricals And Controls**  
Burner Control & Combustion System Specialist

# Integrated Control Systems

Patson's engineered systems are designed to suit your combustion control needs. They are pre-wired, pre-tested and ready to install to minimize installation time.

- Flame Monitoring
- Flame Failure & Safety
- Ignition Controls
- Safety Interlocks
- Safety Shutdown
- Temperature Control
- Pressure Control
- Firing Rate Modulation
- Fuel / Air Ratio Control



**Patson Electricals And Controls**  
Burner Control & Combustion System Specialist

# ***MAXON Combustion Control System Components***



- Automated Fuel / Air Ratio Control System
- Maximize efficiency and minimize emissions
- Integrates with burner management system

## ***Honeywell IRIS Industrial Flame Monitoring for Continuous Burners***



- Ideally suitable for Multiple Burner Applications with exotic fuels
- Wide spectral response
- Adjustable Flame On, Flame Off Points
- Multiple viewing heads with independent sensor configuration
- Flare Stack Pilot Monitoring

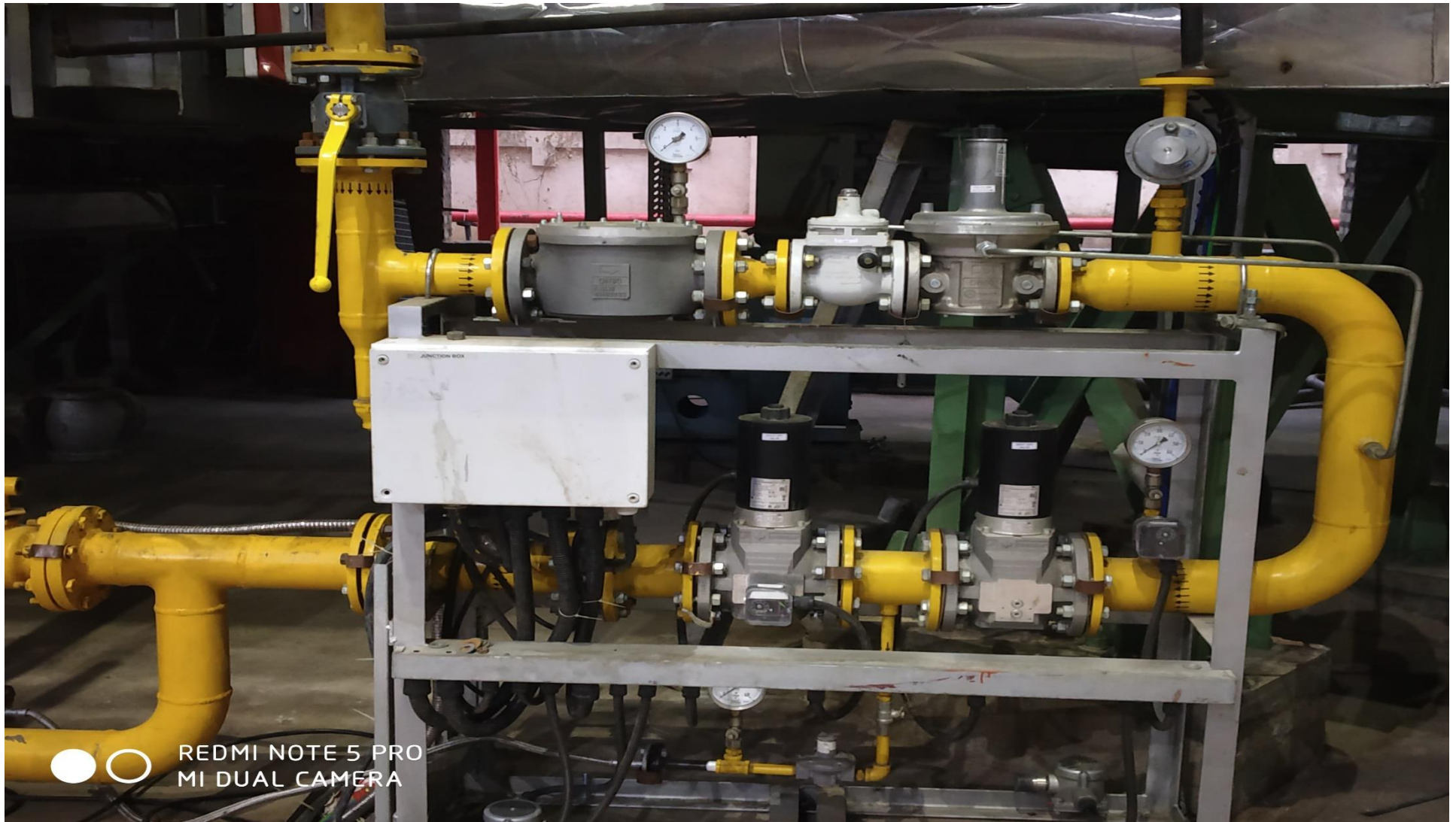
**Patson Electricals And Controls**  
Burner Control & Combustion System Specialist

# Gas Train Installation



**Patson Electricals And Controls**  
Burner Control & Combustion System Specialist

# *Gas Train Installation*



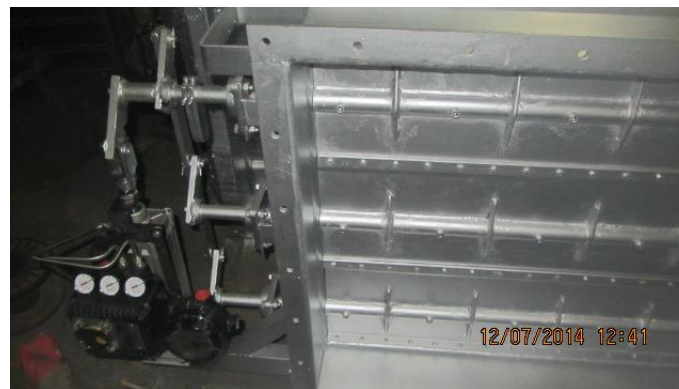
**Patson Electricals And Controls**  
Burner Control & Combustion System Specialist

# Gas Train Installation



**Patson Electricals And Controls**  
Burner Control & Combustion System Specialist

# BUTTEFLY VALVES / MULTI LOUVER DAMPERS WITH ACTUATORS



**Patson Electricals And Controls**  
Burner Control & Combustion System Specialist

# ***Key Project Executed***

- **Precision Metals** – Complete Burner Automation & Temperature Control system for Bogie Furnace.
- **Jindal Saw** – Reheat furnace retrofit with Butterfly valves & Modutrol Motors
- **Heatex** – Multi louver Dampers with Pneumatic Actuators for Boilers
- **Tata Auto Comp** – Complete Auto Flaming System with burner & control panel for Car Bumper Molding Incorporated with Robot
- **Mahindra Group** – Various Burners, Gas Train & Combustion Control Products for different projects
- **Maruti Udyog** – Flame Monitoring System (HON / Iris)
- **Kirloskar Pneumatic** – Complete flame monitoring system for CNG Compressor in CNG Fuelling Application
- **Hindalco Industries** – Flame Monitoring System for Kiln and Dual Fuel Burner
- **Ador Welding** – Flare Stack Monitoring System for GAIL Pata & Petron Dubai projects
- **JSW** – Flame Monitoring System for Boiler with Mixed & BF Gas
- **Jindal Group** – Various Burners, Gas Train & Combustion Control Products for different projects



# Major Customers List

## END USERS:

- TATA MOTORS LTD
- ESSAR STEEL LTD
- MAHINDRA & MAHINDRA LTD
- LINDE INDIA LTD
- TATA AUTO COMP SYSTEMS LTD
- JSW STEEL LTD
- L & T HEAVY ENG.LTD
- JINDAL SAW LTD
- 3M INDIA LTD
- HINDALCO INDUSTRIES LTD
- CUMMINS INDIA LTD
- ADITYA BIRLA CHEMICALS
- BHUSHAN STEEL LTD
- EXIDE INDUSTRIES LTD
- FORCE MOTORS LTD
- SUNFLAG IRON & STEEL LTD
- AND MANY MORE

## OEM CUSTOMERS:

- THERMAX LTD
- BLOOM COMBUSTION
- ALLIANCE THERMAL
- KELVIN ENERGY
- KALYANI ENTERPRISES
- FURNTEK ENGINEERS
- HEATEX INDUSTRIES LTD
- ENERGY EQUIPMENTS
- SACHHI ENGINEERING
- ELITE THERMAL
- RADIAL ENGINEERS
- GRANDPRIX ENGINEERING
- VANAZ ENGINEERS LTD
- ME ENERGY
- BAJAJ STEEL LTD

# ***Vendor Registration with Key Customers***

- TATA MOTORS LTD
- ESSAR STEEL LTD
- MAHINDRA & MAHINDRA LTD
- LINDE INDIA LTD
- TATA AUTO COMP SYSTEMS LTD
- JSW STEEL LTD
- L & T HEAVY ENG.LTD
- JINDAL SAW LTD
- 3M INDIA LTD
- HINDALCO INDUSTRIES LTD
- CUMMINS INDIA LTD
- ADITYA BIRLA CHEMICALS
- BHUSHAN STEEL LTD
- EXIDE INDUSTRIES LTD
- FORCE MOTORS LTD
- AND MANY MORE
- THERMAX LTD
- BLOOM COMBUSTION
- ALLIANCE THERMAL
- KELVIN ENERGY
- KALYANI ENTERPRISES
- FURNTEK ENGINEERS
- ENERGY EQUIPMENTS
- SACHHI ENGINEERING
- ELITE THERMAL
- RADIAL ENGINEERS
- GRAND PRIX ENGINEERING
- ARVIND CORROTECH LTD

# Infrastructure

## OFFICE ADDRESS

- C - 4,Pavana Industrial Premises
- T - 204, M.I.D.C. Bhosari,  
Pune - 411026  
Contact No.: 09850976205 , 9922751734  
T/F No. : 020 - 66305074  
Email Id: [info@patsoncontrols.com](mailto:info@patsoncontrols.com)  
[patsonelectricals@vsnl.com](mailto:patsonelectricals@vsnl.com)

### Certificates:

- GST NO: 27AKYPP8702C1ZQ
- PAN NO: AKYPP8702C
- Banker  
UNION BANK OF INDIA  
BRANCH: NAVI PETH , PUNE-411030  
ACCOUNT TYPE: CASH CREDIT

## WORKS ADDRESS

C - 4,Pavana Industrial Premises  
T-204, M.I.D.C. Bhosari,  
Pune - 411026  
Contact No.: 9922751734, 7219301314

- SPACE : 1000 sq ft
- Well maintain for Material storage
- Equipped with 3ph power supply & Manufacturing facility for Gas Train, Burner Control panels, each and every products testing facility before dispatch
- Tools & Tackles

# Contact

## Patson Electricals And Controls

- C - 4,Pavana Industrial Premises
- T - 204, M.I.D.C. Bhosari,  
Pune - 411026  
Contact No.: 09850976205 ,  
09922751734  
T/F No. : 020-66503074

Contact Person: Mr. Rajendra Patel  
Contact Number: +91-98 50 976205

Email: [patson@patsoncontrols.com](mailto:patson@patsoncontrols.com)  
[info@Patsoncontrols.com](mailto:info@Patsoncontrols.com)