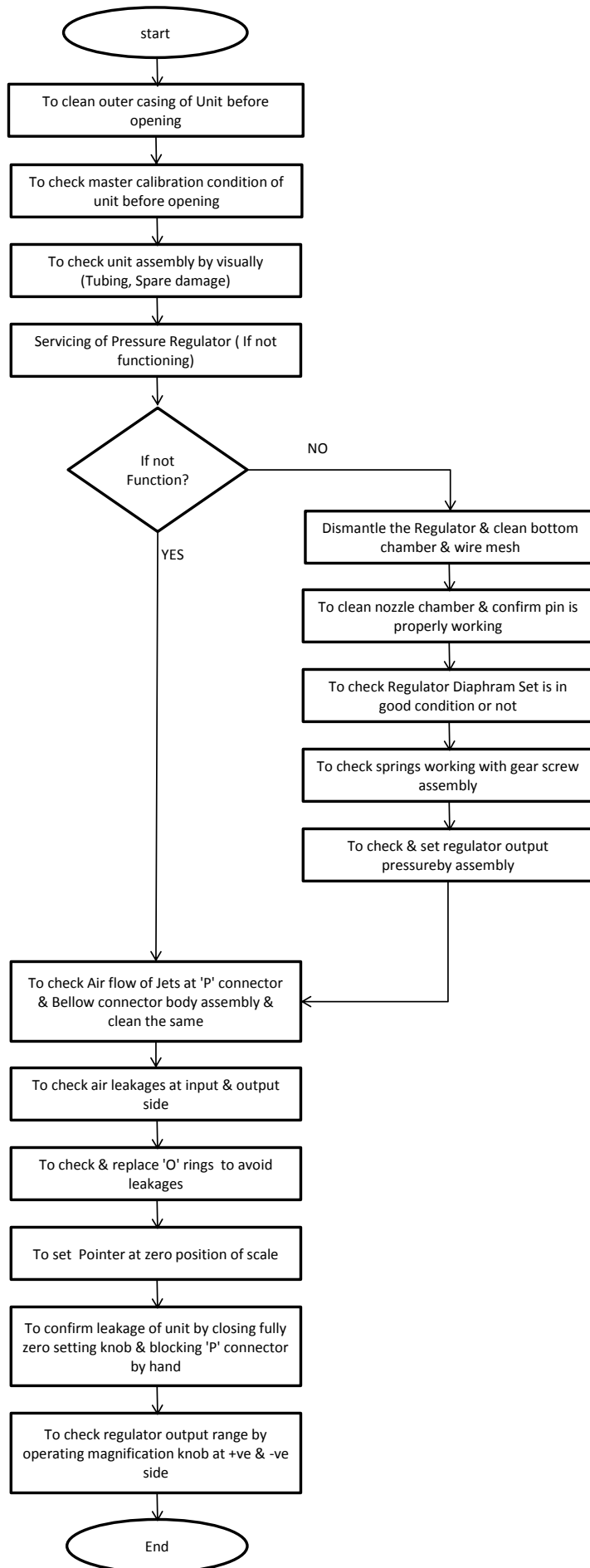
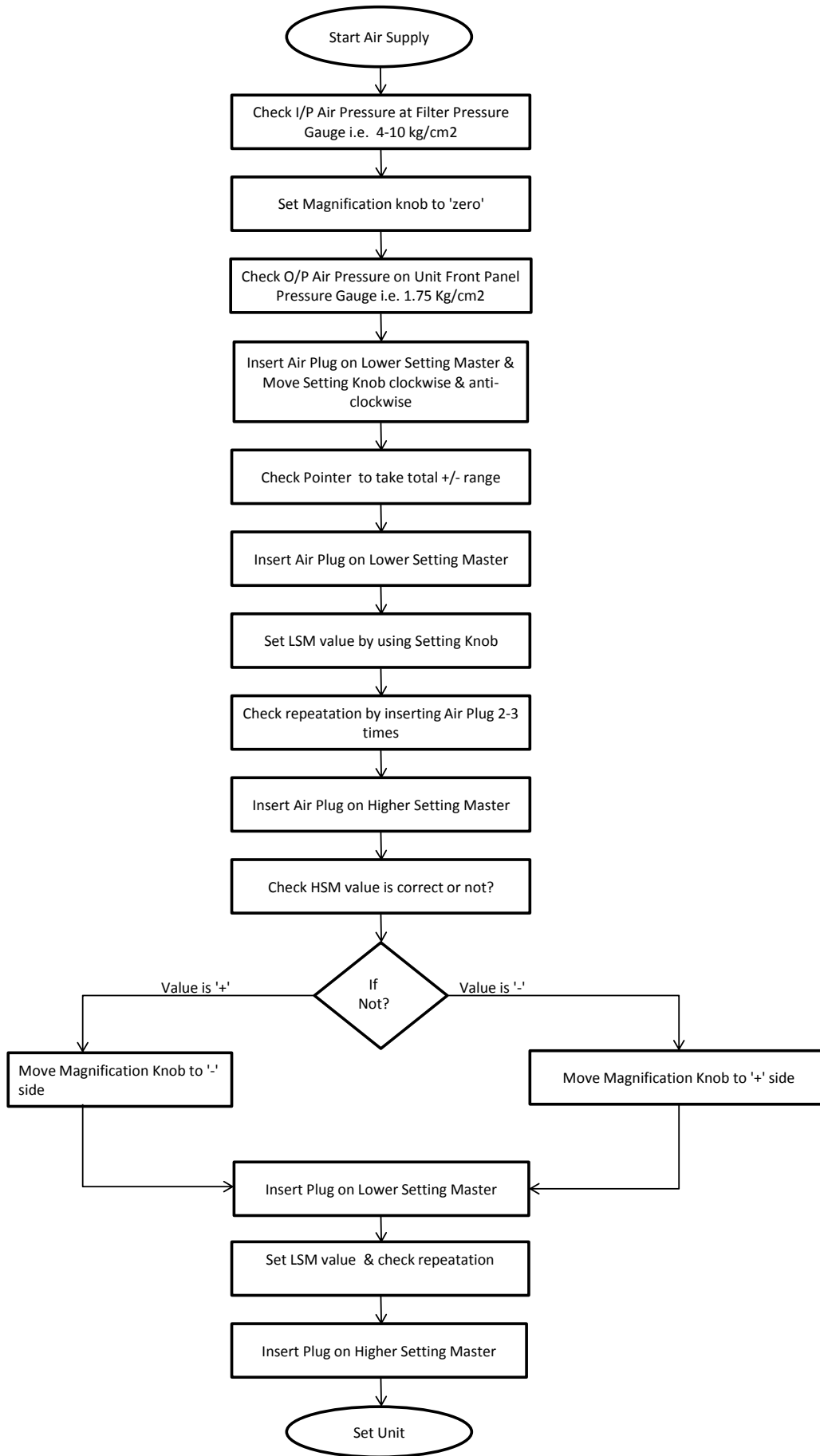


## Servicing Procedure - 'C' Jet Air Gauge Unit



# Calibration Procedure - 'C' Jet Air Gauge Unit





Accurate Engineering Company Pvt. Ltd.

Work Instruction for AMC

C' Jet Air Gauge Unit

Document No.

AEC – AMC – 01

Issue No.: 1

Revision No.: 0

1	Firstly check the Input Pressure ( 4 to 10 kg/cm <sup>2</sup> ) of Air Gauge Unit
2	Check filter unit & drain the filter.
3	Observe the unit before servicing
4	Check the 'O' Ring Leakage, 'O' shift & Backless of Air Gauge Unit.
5	Check the operating / output Pressure (1.75 Kg/cm <sup>2</sup> )
6	Calibrate Air Gauge Unit by using Air Plug.
7	Check all Tubing connection of Air Gauge Unit.
8	Check Bellow wire & Bellows.
9	Check & Clean the pressure regulator.
10	Clean the pointer movement assembly ( Gear & teeth ) .
11	Clean the 0.98mm Jet, zero setting assembly, 'P' connector & reassemble it.
12	Again check the output pressure of pressure regulator.
13	Again check the calibration of unit & check gauge repeatation.
14	If any error found in Air Gauge Unit then remove the scale & set the unit.
15	Again check the Air Gauge Unit.
16	Clean the Casing, Panel, Glass & Scale .
17	Stick the calibration sticker on Air Gauge Unit.
18	Give the calibration report to Customer.
19	If necessary, give the spare list to Customer.

Reviewed By:	Approved By:	Effective Date:
Prepared By:		Copy No.:



**Accurate Engineering  
Company Pvt. Ltd.**

**Annual Maintenance Contract  
( Check list )**

**Document No.** AEC - AMC - 04 RO 01012013 **Page:** 1 of 1

**Subject:** **Air Gauge Unit - 'C' Jet / Converter** **Issue No.:** 1

**Revision No.:** 0

**Customer Name :**

Sr. No.	Check Points	√ / X
1	To Check the Input Pressure ( 4 to 10 kg/cm <sup>2</sup> ) of Air Gauge Unit	
2	To Check filter unit condition & drain the filter	
3	To Check the Operating / Output Pressure (1.75 kg/cm <sup>2</sup> )	
4	To Check the 'O' Ring Leakage, Zero shift & Backlash of Air Gauge Unit	
5	To Check Master Calibration condition of unit before Servicing	
6	To Check the unit assembly (Tubing, Spares damage)	
7	To Check Bellow wire & Bellows condition	
8	To Check & Clean the Pressure Regulator (If not functioning properly)	
9	To Remove Oil & Moisture from Pressure Regulator	
10	To Clean the Pointer Movement Assembly (Rack n Pinion)	
11	To Clean Internal Nozzle, Zero Setting Assembly, 'P' connector & reassemble it	
12	To Check again the output Pressure of Pressure Regulator (1.75 kg/cm <sup>2</sup> )	
13	To Check again the Calibration of Unit & Check Gauge Repeation	
15	To Check & Verify the condition of the Customer Plug which are use on that unit	

<b>Reviewed By:</b> MR	<b>Approved By:</b> Business Head	<b>Effective Date:</b> 01/01/2013
<b>Prepared By:</b> PGM		<b>Copy No.:</b>

**AEC - AMC - 04 RO 01012013**