



ACCURATE
Engineering Quality
Since 1963

Accurate Engineering Co. Pvt. Ltd.

(Precision Measuring Instruments & Services)

Office : 67, Hadapsar Industrial Estate, Pune - 411 013, India.

Tel.: +91-20-66069595, 66069501, 8600023615

E-mail : accurateengg@accurate.co.in Web : www.accurateengg.com

Works : A/P - Khalad, Saswad-Jejuri Rd., Tal. Purandhar, Dist. Pune - 412 301, India.

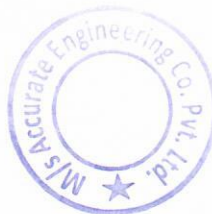
Tel. : +91 9970001681

CIN No. : U33129MH1963PTC012591

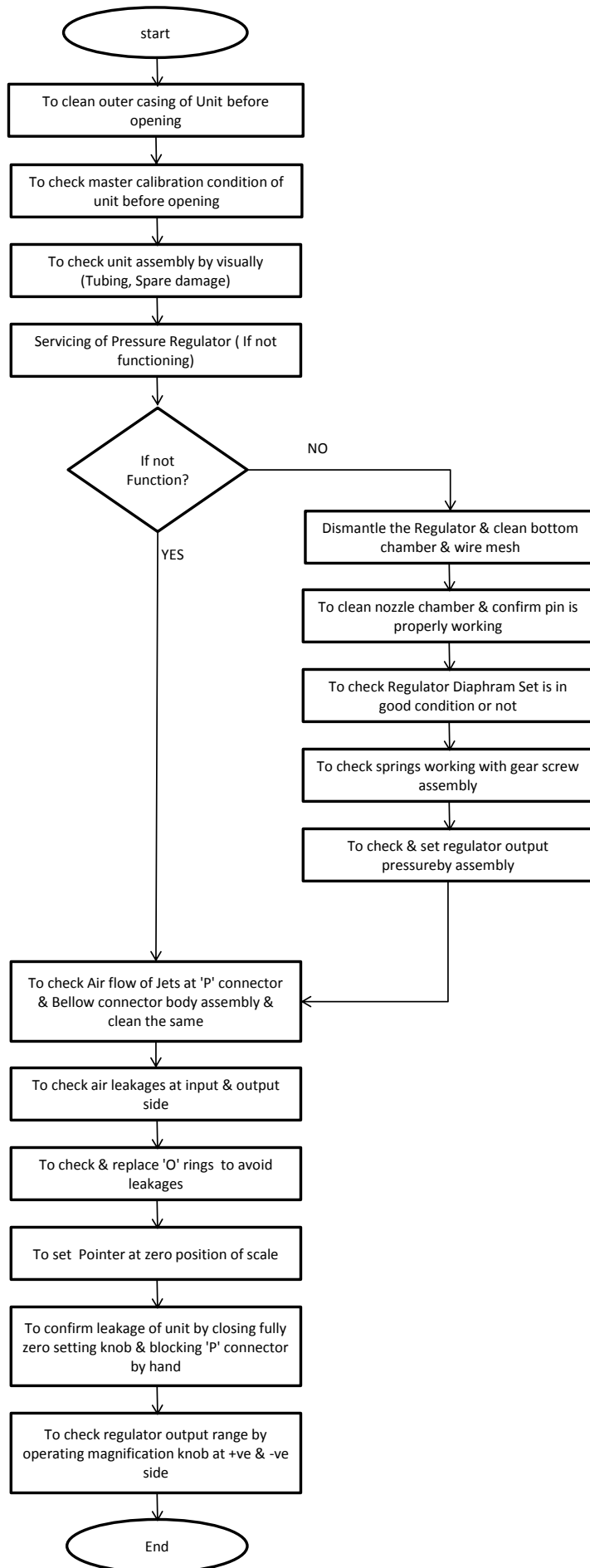
DECLARATION/UNDERTAKING

We, **M/s. Accurate Engineering Company P. Ltd.** declared that, we are understood & following the process of EHS Practices. In line with, we are submitted self-declaration with following clauses.

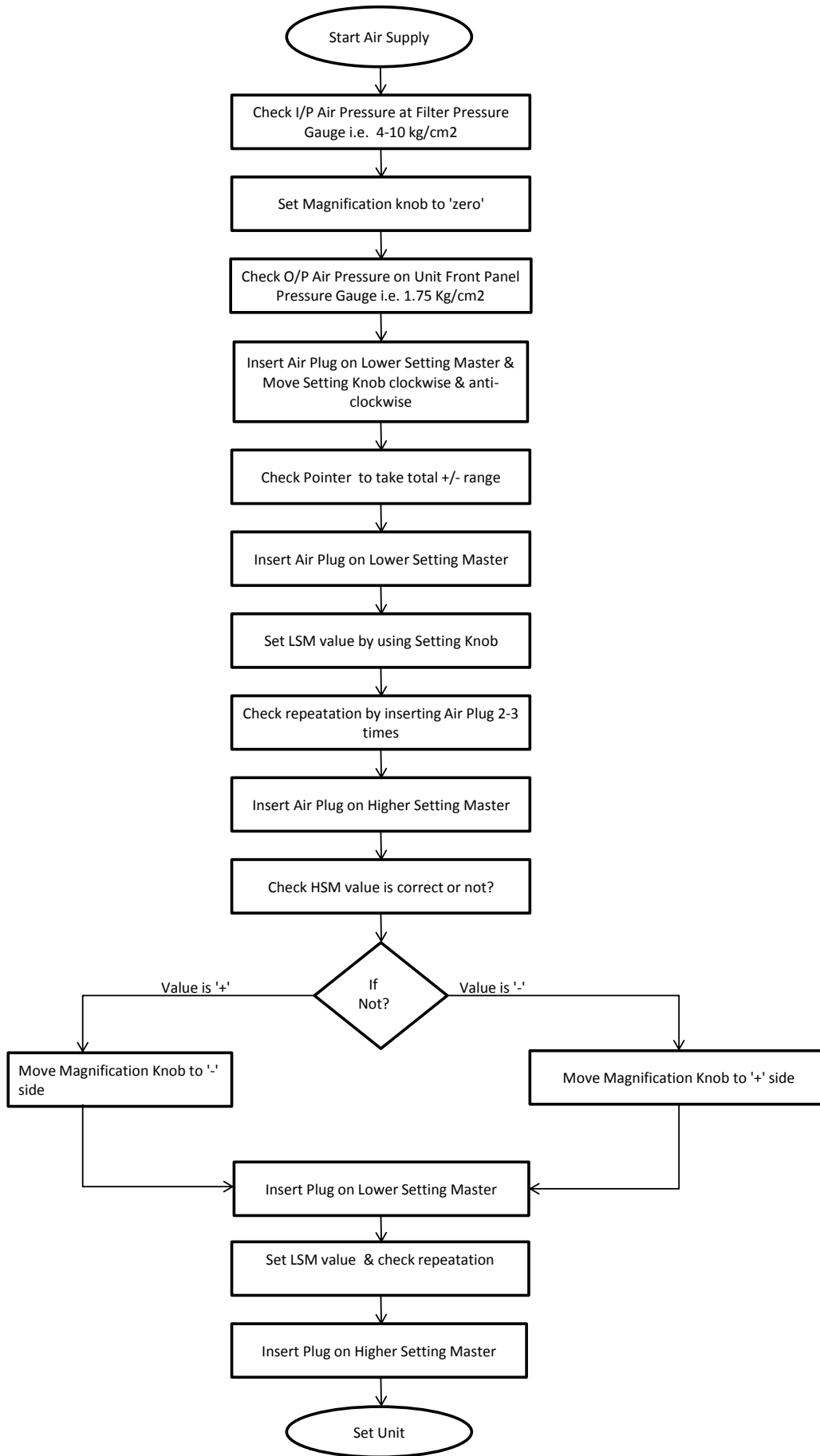
- We ensured that our employees are well aware of work permit system/work permit adherence.
- We ensured that our organization are aware of Method Statement/Method Statement adherence.
- We have not conducted a HIRA study in past but we will ensure that we will conduct the HIRA study in future & we will follow all the norms of ETL while performing work at ETL.
- We ensured that our organization have follow safe work procedures, documents which define how risks relevant to the contracted activities are managed.




Servicing Procedure - 'C' Jet Air Gauge Unit



Calibration Procedure - 'C' Jet Air Gauge Unit



 ACCURATE <i>Engineering Quality</i>		Accurate Engineering Company Pvt. Ltd.		Work Instruction for AMC	
				C' Jet Air Gauge Unit	
Document No.		AEC – AMC – 01		Issue No.: 1	
				Revision No.: 0	
1	Firstly check the Input Pressure (4 to 10 kg/cm ²) of Air Gauge Unit				
2	Check filter unit & drain the filter.				
3	Observe the unit before servicing				
4	Check the 'O' Ring Leakage, 'O' shift & Backless of Air Gauge Unit.				
5	Check the operating / output Pressure (1.75 Kg/cm ²)				
6	Calibrate Air Gauge Unit by using Air Plug.				
7	Check all Tubing connection of Air Gauge Unit.				
8	Check Bellow wire & Bellows.				
9	Check & Clean the pressure regulator.				
10	Clean the pointer movement assembly (Gear & teeth) .				
11	Clean the 0.98mm Jet, zero setting assembly, 'P' connector & reassemble it.				
12	Again check the output pressure of pressure regulator.				
13	Again check the calibration of unit & check gauge repeation.				
14	If any error found in Air Gauge Unit then remove the scale & set the unit.				
15	Again check the Air Gauge Unit.				
16	Clean the Casing, Panel, Glass & Scale .				
17	Stick the calibration sticker on Air Gauge Unit.				
18	Give the calibration report to Customer.				
19	If necessary, give the spare list to Customer.				
Reviewed By:		Approved By:			Effective Date:
Prepared By:					Copy No.:



**Accurate Engineering
Company Pvt. Ltd.**

**Annual Maintenance Contract
(Check list)**

Document No. AEC - AMC - 04 RO 01012013 **Page:** 1 of 1

Subject: **Air Gauge Unit - 'C' Jet / Converter** **Issue No.:** 1

Revision No.: 0

Customer Name :

Sr. No.	Check Points	√ / X
1	To Check the Input Pressure (4 to 10 kg/cm ²) of Air Gauge Unit	
2	To Check filter unit condition & drain the filter	
3	To Check the Operating / Output Pressure (1.75 kg/cm ²)	
4	To Check the 'O' Ring Leakage, Zero shift & Backlash of Air Gauge Unit	
5	To Check Master Calibration condition of unit before Servicing	
6	To Check the unit assembly (Tubing, Spares damage)	
7	To Check Bellow wire & Bellows condition	
8	To Check & Clean the Pressure Regulator (If not functioning properly)	
9	To Remove Oil & Moisture from Pressure Regulator	
10	To Clean the Pointer Movement Assembly (Rack n Pinion)	
11	To Clean Internal Nozzle, Zero Setting Assembly, 'P' connector & reassemble it	
12	To Check again the output Pressure of Pressure Regulator (1.75 kg/cm ²)	
13	To Check again the Calibration of Unit & Check Gauge Repeation	
15	To Check & Verify the condition of the Customer Plug which are use on that unit	

Reviewed By: MR	Approved By: Business Head	Effective Date: 01/01/2013
Prepared By: PGM		Copy No.:

AEC - AMC - 04 RO 01012013