



# Safety Induction Training

Ms. Diksha Dhamija  
HR & OPERATION SPECIALIST  
[www.appstech.in](http://www.appstech.in)



## Index

- General Rules of Safety
- PPE Guideline
- Height work
- Observation & Guideline



## General Rules for Safety

- Always display you're your pass to security person on request. Don't enter on site without site pass & PPE.
- Always wear PPE ( Personal Protective Equipment ) at site.

(Safety Shoes, Safety helmet & Reflector Jacket)

- Usage of eye protection equipment shall be ensured when workmen are engaged for grinding, chipping, welding, and gas cutting. For other jobs as and when site safety coordinator insists eye protection has to be provided.
- Adequate illumination at workplace shall be ensured before starting the job at night (55lux).
- Smoking is not allowed on Site.



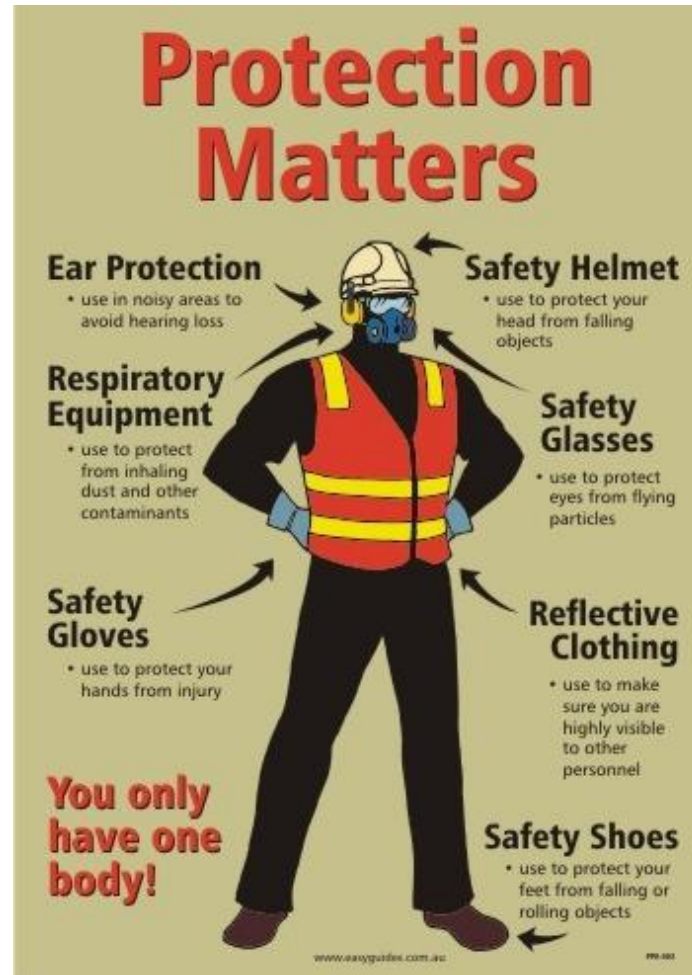
**NO SMOKING**

## General Rules for Safety

- All tools and tackles shall be inspected before use. Defects to be reported immediately.
- Use Car Seat Belt while driving inside Plant and don't exceed speed limit of 20km/hr.
- Don't Use mobile inside plant while engage in work. Find Safe Place for use mobile.
- Use proper electric equipment for Hot work.
- Debris, scrap, and other materials to be cleared from time to time from the workplace and at the time of closing of work every day.

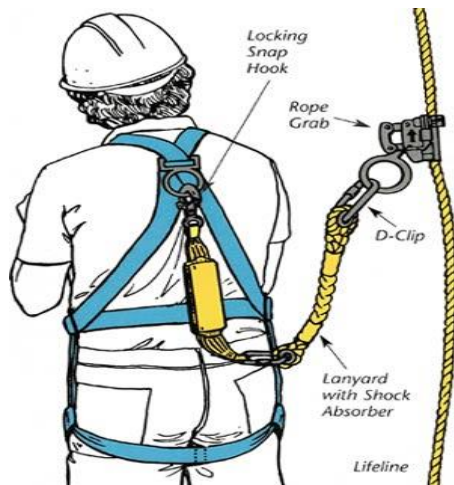


# PPE Guideline



# Height Work

- Safety Belt must be used for working more than 1.5 Mtrs height and anchored on platform while working.
- Use scaffold after proper fixing of all equipment's.
- Secure all tools & Equipment's on platform. No loose material allowed on platform.
- While climbing on ladder of Scaffolding use fall arrestor for fall protection.
- No gap allowed on working platform.
- Top Rail, Mid Rail & Toe Guard must be installed above platform for material & Person Safety.



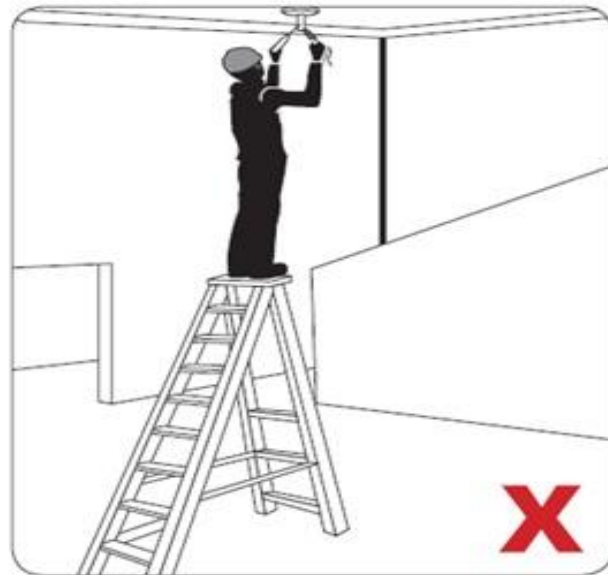
## Height Work

- All Wheels of Scaffold must be locked while person working on scaffold.
- In case of hot work at height ensure that area of falling arc of cutting/welding must be free of combustible/ remove combustible material on floor.
- Keep Fire Extinguisher on site while doing hot work.
- Always use Safety Belt and anchor while working on MEWP
- Use Life Line for activity at height.
- Use Rope and Clamp for lifting material
- Tie material properly till permanent fixing of material



## Height Work

- Use proper aluminum ladder and check condition. No step missing or broken and locks in working condition.
- Use Safety belt while working on Ladder.
- One person must be holding the ladder and give support to ladder.
- Person is allowed to work on top step of the ladder; two steps must be left for support.

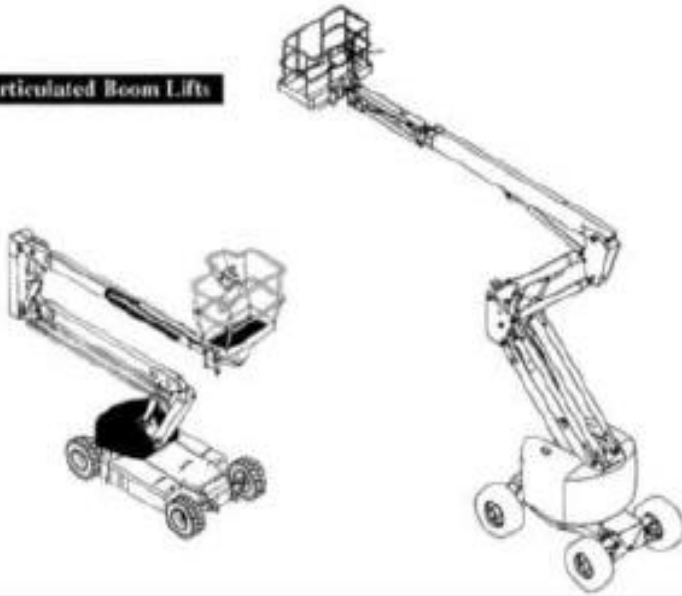




MEWP:- Mobile Elevating Work Platform.

## Types :

Articulated Boom Lifts



Scissors Lift



## MEWP:- Mobile Elevating Work Platform.

- Ground Controls. Ground Person (Banksman) familiar with the operation of MEWP in case of emergency.
- Person designated as ground personnel are not to be assigned to other unrelated duties when the personnel lift is in operation.
- Operator-The person in the basket responsible for operating the MEWP and he should be trained and issued license to operate.
- Over reaching is not allowed on MEWP.



## MEWP:- Mobile Elevating Work Platform.

- Valid Third party certificate available on site of MEWP.
- Check operator's License.
- Operator only operates MEWP in cabin.
- All people must be used Safety belt and anchored on railing of platform.
- In case of hot work at height use fire Blanket and covered the area and also remove flammable material near by working area.
- Barricade the MEWP before start of work





Hot work without Fire watcher and combustible material lying on ground



Person working without anchoring safety belt.



**Uninspected Scaffold being used not having identification TAG.**



The Fire Extinguisher found in depressurized condition



Persons working under MEWP.



Loose and protruding materials in MEWP man basket.





**Employees using mobile in work area.**



**Extensive use of mobile on construction site.**

**5 employees are in a frame – 3 are using mobile, out of which 2 are equipment operators**

**Use of Step Ladders in an area which is accessible to MEWP / Scaffold.**  
**No person available to secure ladder**  
**Use of top 3 rungs for work**



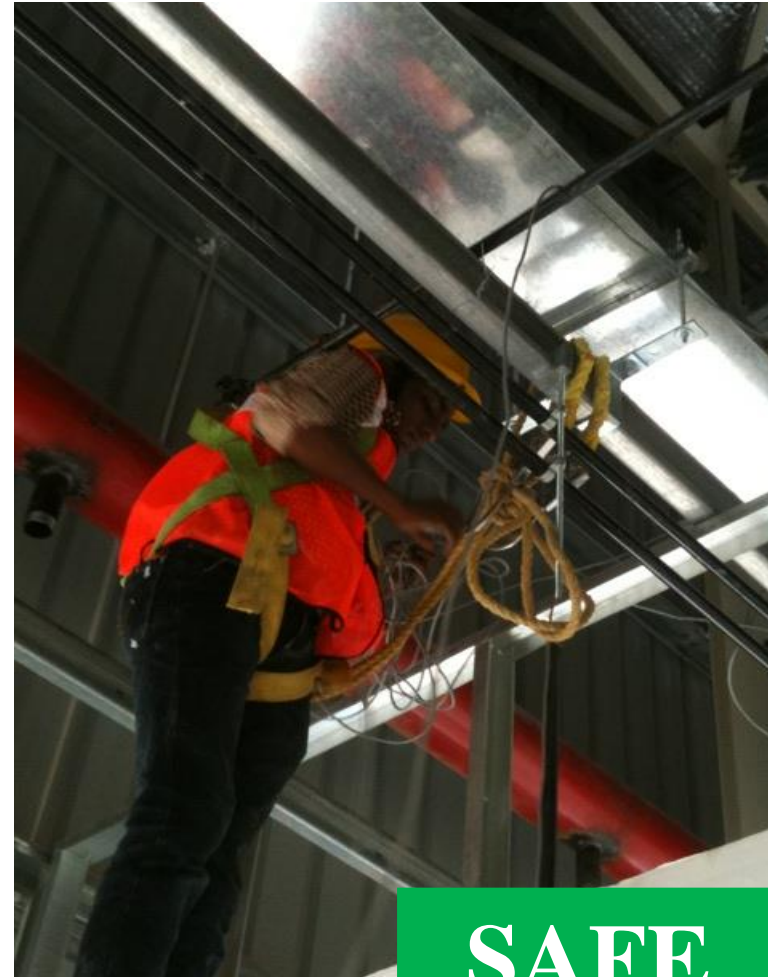
Person working on unsafe scaffold. No proper access for scaffold



Improper anchoring of Safety belt while working on ladder.



**UNSAFE**



**SAFE**



# Namaste ( Thank you )

AppsTech Solution

501, Sahjanand Arcade, Nr. Helmet circle, Memnagar,  
Ahmedabad, Gujarat.

[www.appstech.in](http://www.appstech.in)

[www.digitactseed.com](http://www.digitactseed.com)