

DETAILS OF PLANT AND MACHINERY

1



2.



Control panel area containing:

- Buttons for power and mode selection.
- A digital display labeled "Amp".
- A rotary knob for current adjustment.
- Buttons labeled "Fault" and "Cutting".
- Three red warning icons: a lightning bolt, an open book, and a hand with a flame.

Air Compressor Built-in

DIGITAL IGBT
PLASMA CUTTER

DIGITAL IGBT INVERTER
AIR PLASMA CUTTER

Combi CUT100 ^{CE}

pilot

Buttons for pilot and start functions.



4.



5.



Control panel area containing:

- Buttons for power and mode selection.
- Amp display window.
- Fault and Cutting indicator lights.
- A rotary knob for current adjustment.
- Text: "Air Compressor Built-in"



DIGITAL IGBT
PLASMA CUTTER

DIGITAL IGBT INVERTER
AIR PLASMA CUTTER

Combi CUT100 ^{CE}

pilot



6.





BRIGHT ENGINEERING CO.
P.O. BOX 100, SHEPP-HAVEN, ONT. L5A 4R6, CANADA (416) 463-1111

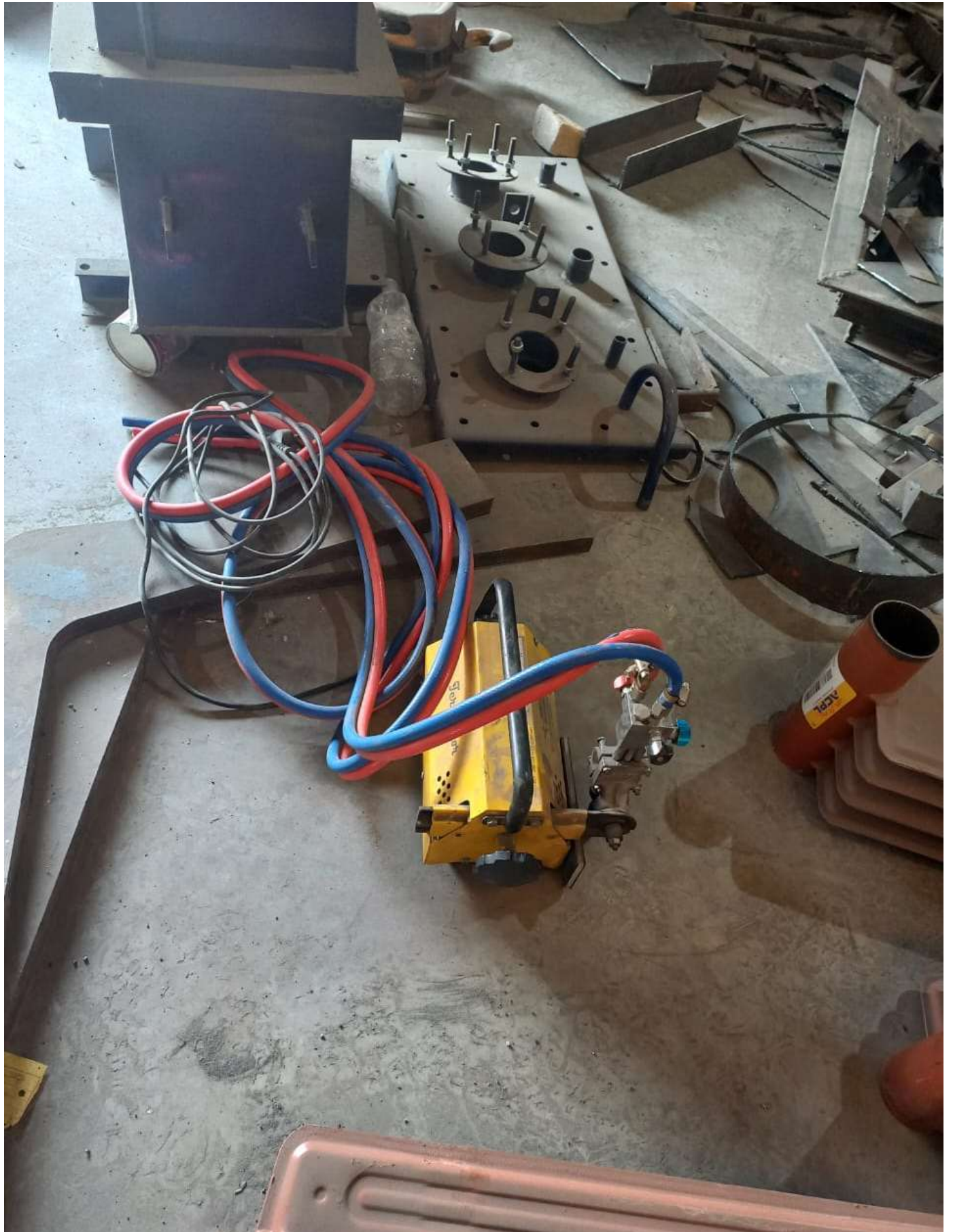
WELDING OUTPUT	
NO. 11	
NO. 22	
NO. 33	
NO. 44	
NO. 55	
NO. 66	
NO. 77	
NO. 88	
NO. 99	
NO. 100	
NO. 110	
NO. 120	
NO. 130	
NO. 140	
NO. 150	
NO. 160	
NO. 170	
NO. 180	
NO. 190	
NO. 200	
NO. 210	
NO. 220	
NO. 230	
NO. 240	
NO. 250	

WARNING
CHECK ALL WIRING BEFORE USE.
DO NOT TOUCH HOT PARTS.
DO NOT TOUCH THE WELDING TORCH.
DO NOT TOUCH THE WELDING CABLES.
DO NOT TOUCH THE WELDING MASK.
DO NOT TOUCH THE WELDING GLOVES.
DO NOT TOUCH THE WELDING SHIRT.
DO NOT TOUCH THE WELDING PANTS.
DO NOT TOUCH THE WELDING BOOTS.
DO NOT TOUCH THE WELDING HELMET.
DO NOT TOUCH THE WELDING Goggles.

8.



9.



10



11





13.



