

## SK 400 SENSOR INSTALLED IN FORGING MACHINE

Machine installed with SK 400 Sensor

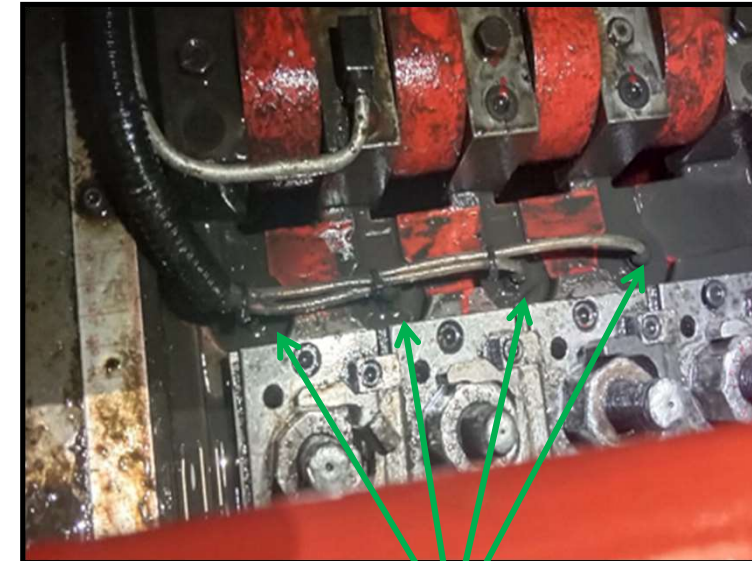
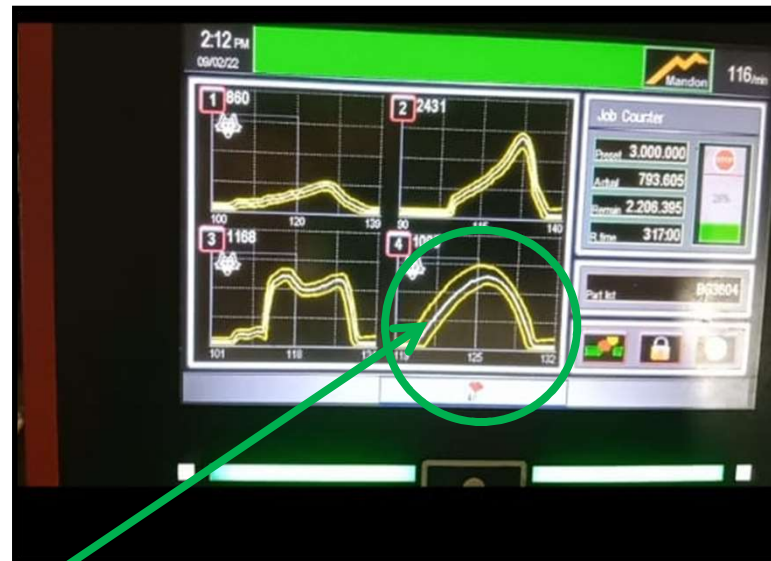


Sensor panel Installed over the machine panel.



# ACTUAL LOCATION OF SK 400 SENSORS

wise Graph for load sensing over the die & punches



Display of all 4 stage of forging with lower control limit, upper control limit band for load sensing and running load shows between these two limits.

Load sensor inserted behind the die and punches as shown