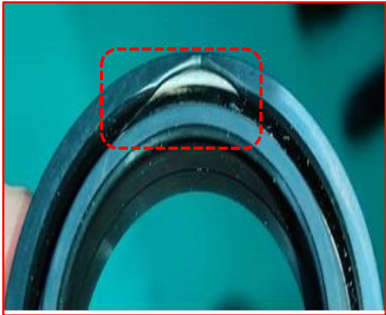


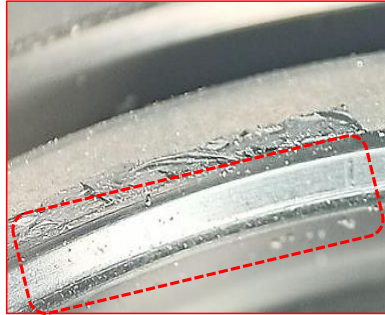
Shocker Seal Defect Matrix



Less Material @ Seal Back Face



Cut @ Dust Lip Area Due to Dirty Cavity



Stick Flash



Tear at Lip area



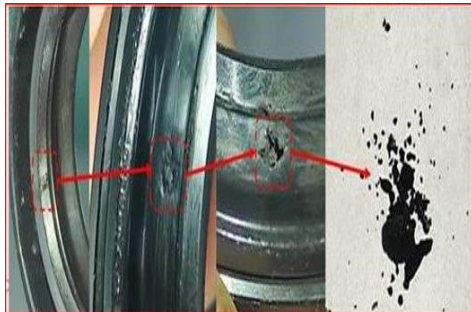
Top Side Dust Lip Deformed



Dust Seal Without Metal Insert



Cut @ Main Lip Edge



Contamination (Foreign object) @ Main Lip Edge