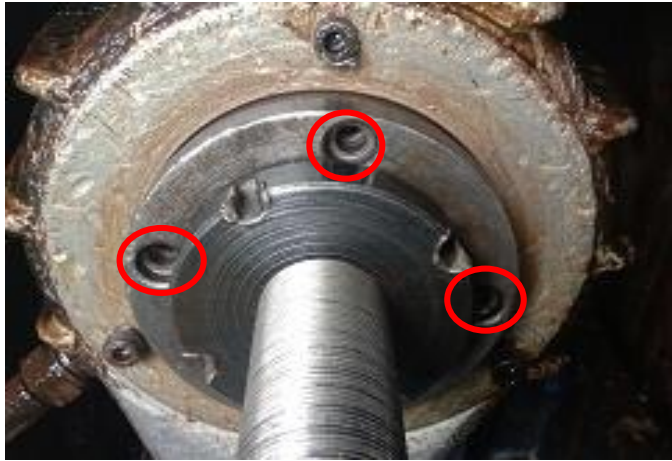


# ACTION EVIDENCIES---Occurrence

---

BEFORE



Before- Stopper Bolt broken

AFTER



After –All Stopper Bolt Ok Conduction

# ACTION EVIDENCIES---Occurrence

**BEFORE**

**Before-Bolt Broken Check Point Not add JH Sheet**

**AFTER**

Sr. No.	Part	Standard	Method	Responsibility	Freq.	1	2	3	4	5	6	7	8	9	10	11	12	13	14	15	16	17	18	19	20	21	22	23	24	25	26	27	28	29	30	31		
1	Collar Housing Condition	Should be Tight	Allen Key (5 mm)	Supervisor	D																																	
2	Door Sensor	Should be Tight	Allen Key (4 mm)	Supervisor	D																																	
3	All Safety Guards	Should be Tight	Allen Key (4.5 & 6 mm)	Supervisor	D																																	
4	Check Die jaw condition	Should be Tight	Allen Key (4.5 & 6 mm)	Supervisor	D																																	
5	All Electrical part condition	Should be Tight	Allen Key (4.5 & 6 mm)	Supervisor	W																																	
6	Tool touch condition	Should be Tight	Allen Key (2.5, 3, 4 mm)	Operator	D																																	
7	Insert tightening nut	Should be Tight	Allen Key (15 & 5, 6 mm)	Supervisor	D																																	
8	Check cleaning & greasing	Smooth	Diase & greasing	Visual	Supervisor	M																																
9	Stopper Bolt broken	Not crack	Visual	Visual	Supervisor	D																																

**After -Bolt Broken Check Point Add JH Check .**