

MarWin  
7.00-16

GKN Sinter Metal's  
Ahmednagar

3/28/2022 1

16:23:18

Inspector:

SKT

Signature:

Part:

Drawing n°:

Machining operation:

Rod Guide

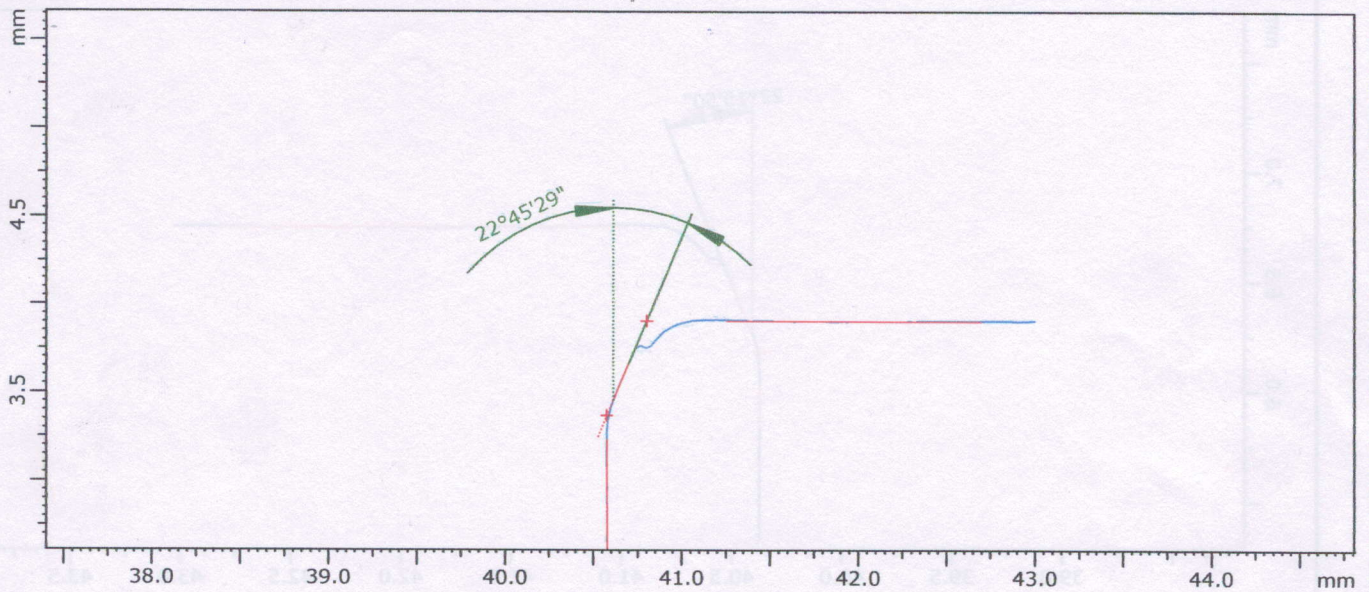
42511 - OK Part 1

I.D. chamfer angle

Comment:

Meas. instrument: MarTalk  
Drive unit: DriveUnit.CD 120  
Probe: PCV 350 x 33 mm Conical  
Lt: 4.12 mm  
Ls: --  
VB: +/-25612.5 µm  
Vt: 0.30 mm/s  
Points: 4095

X:23.32; Z:23.32; -44.19°





MarWin  
7.00-16

GKN Sinter Metal's  
Ahmednagar

3/28/2022 1

16:31:44

Inspector:

SKT

Signature:

Part:

Drawing n°:

Machining operation:

Rod Guide

42511 - OK Part - 2

I.D. Chamfer angle

Comment:

Meas. instrument: MarTalk  
Drive unit: DriveUnit.CD 120  
Probe: PCV 350 x 33 mm Conical  
Lt: 4.53 mm  
Ls: --  
VB: +/-25612.5 µm  
Vt: 0.30 mm/s  
Points: 4509

X:29.1; Z:29.1; -44.26°

