

ACTIONS FOR LINE MARK (WASHER S2PL03812B)

Supplier: **Saptagiri Industries.**

Operation: **Press shop / Machine shop**

Implementation Date: **12.09.2022**

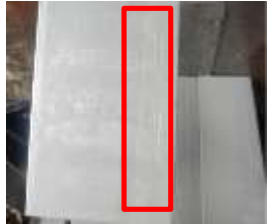
BEFORE



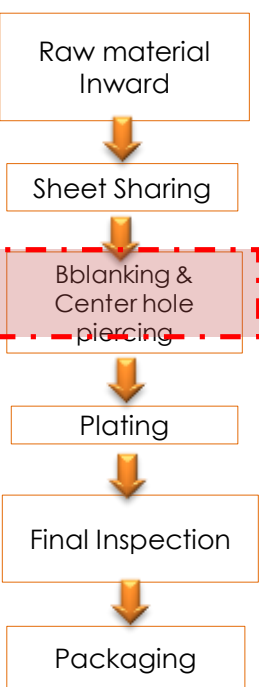
Problem/Present Status: Stamping mark like depth line mark at top surface of Washer K55G.

While blanking operation, sheets' sharp edges draw

Same scratches line mark will generate on parts



Material flow



AFTER

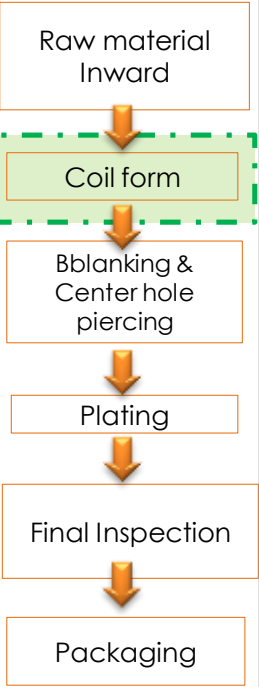


- Sheet sharing operation eliminate

- Material will procure in coil form

- Sheet drawing while part producing avoided

Material flow



While blanking operation, sheets' sharp edges draw
Same scratches line mark will generate on parts

- Sheet sharing operation eliminate
- Material will procure in coil form
- Sheet drawing while part producing avoided



Q-Alert

Doc.No:SIPL/QA/45
Rev. No:00
Rev. Date: 01/08/2017

SAPTAGIRI INDUSTRIES PVT.LTD.



Possible / Reported Defects : DEEP MARK-Heavy line mark, visual defects

Customer : Endurance Technologies Ltd. (Sanand)

Date : 03-09-2022

Part Name : WASHER K55G

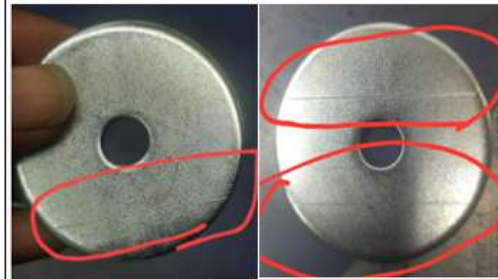
Part No : S2PL038120

Alert !!!

OK



NOT OK



No stamping mark, deep mark OR depth line mark at top surface of Washer K55G.

Stamping mark like depth line mark at top surface of Washer K55G.

Dnyaneshwar Savane
(QA ENGG.)
Prepared By

NITIN WAGADE
(QA HOD)
Prepared By