

ACTIONS FOR LINE MARK (WASHER S2PL03812B)

Supplier: **Saptagiri Industries.**

Operation: **Press shop / Machine shop**

Implementation Date: **12.09.2022**

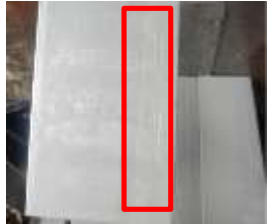
BEFORE



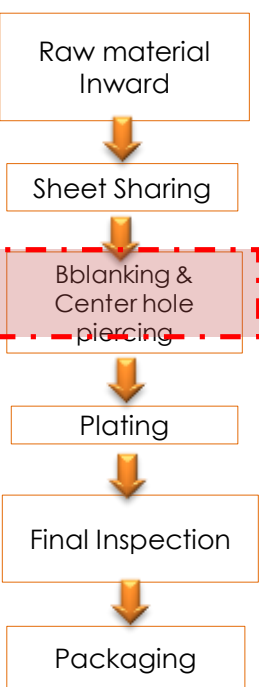
Problem/Present Status: Stamping mark like depth line mark at top surface of Washer K55G.

While blanking operation, sheets' sharp edges draw

Same scratches line mark will generate on parts



Material flow



AFTER

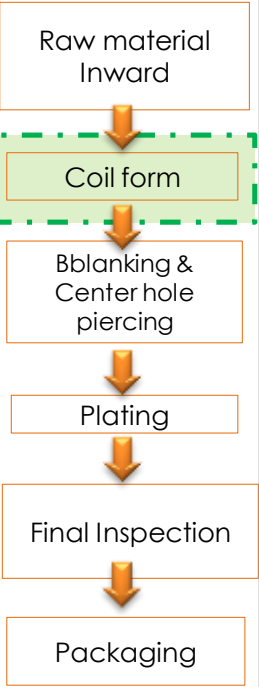


- Sheet sharing operation eliminate

- Material will procure in coil form

- Sheet drawing while part producing avoided

Material flow



While blanking operation, sheets' sharp edges draw
Same scratches line mark will generate on parts

- Sheet sharing operation eliminate
- Material will procure in coil form
- Sheet drawing while part producing avoided