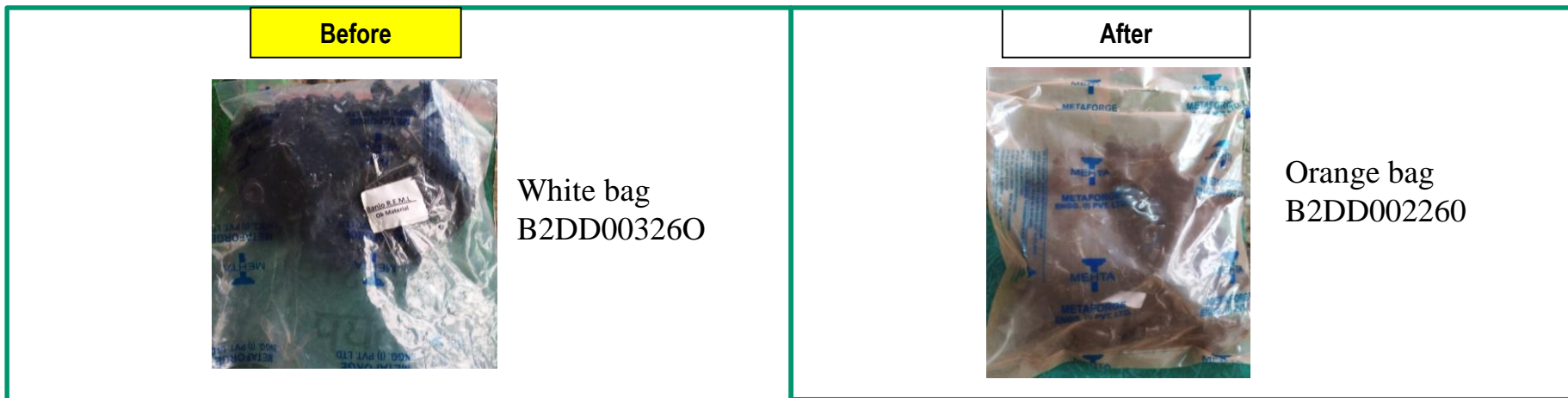




wrong mtg bolt mix-up observed B2DD002260 and



Part Name	Model	Supplier	Defect	Actions	T. Date	Status
B2DD002260 BANJO BOLT	TVS	METAFORGE	<p>Defect Phenomenon – Other part mix up</p> <p>Why 1: 2 type of banjo mix up B2DD002260 & B2DD003260</p> <p>Why 2: During Part surface treatment processing parts got mix up</p> <p>Why 3: Surface treatment processing both parts one another one</p> <p>Root Cause: Surface treatment processing both parts one another one</p>	<p>Containment action: 100% stock inspected at ETL and Pipeline of Metaforge</p> <p>Inspection side action:</p> <ol style="list-style-type: none"> 1. 100% Visual inspection 2. Change Bag color for packing white to orange 3. Change the stickers of bag to identify the parts <p>Cause Side Action: Start alternate surface treatment processing for both banjo bolts</p>	<p>03.09.2022</p> <p>02.09.2022</p> <p>10.09.2022</p> <p>02.09.22</p>	<p>In process</p> <p>Completed</p>