



# ONE POINT LESSON

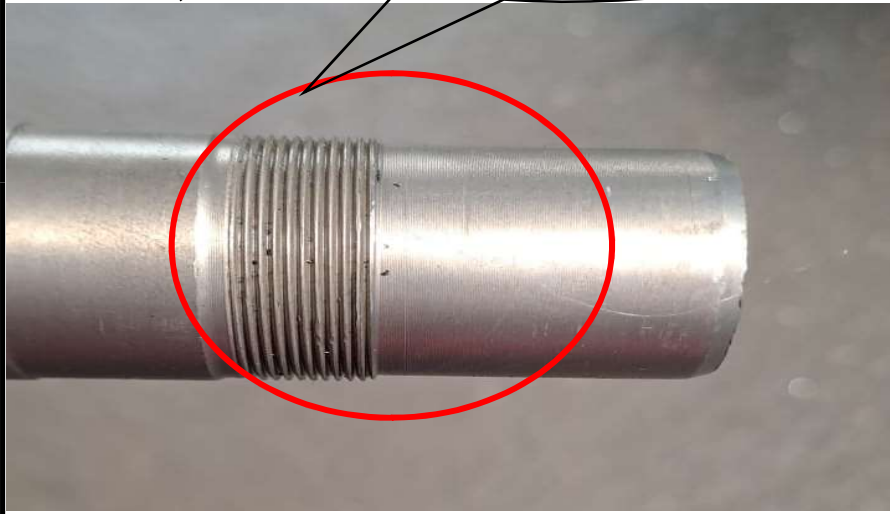
**PROBLEM: THREAD LENGTH SHORT IN STEERING SHAFT(K-19)**

**WRONG**

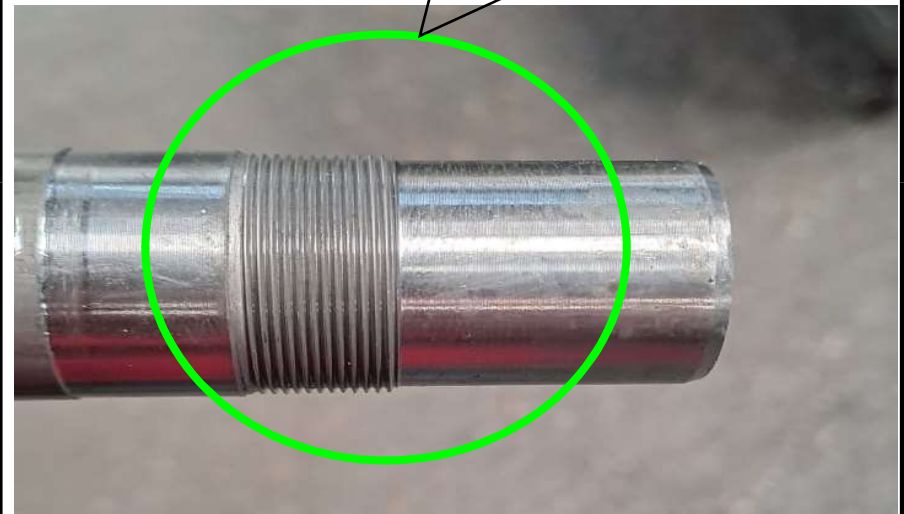
**CORRECT**



**Thread Length Short**



**Thread Length OK**



**OBSERVATION**

**OBSERVATION**

**THREAD LENGTH SHORT IN STEERING SHAFT**

**THRAD LENGTH FOUND OK**

**IMPACT**

**IMPACT**

**FITMENT ISSUE**

**FITMENT OK**

**PRPARED BY: Ashish Sharma**

**APPROVED BY Mr. Anuj Saxena**